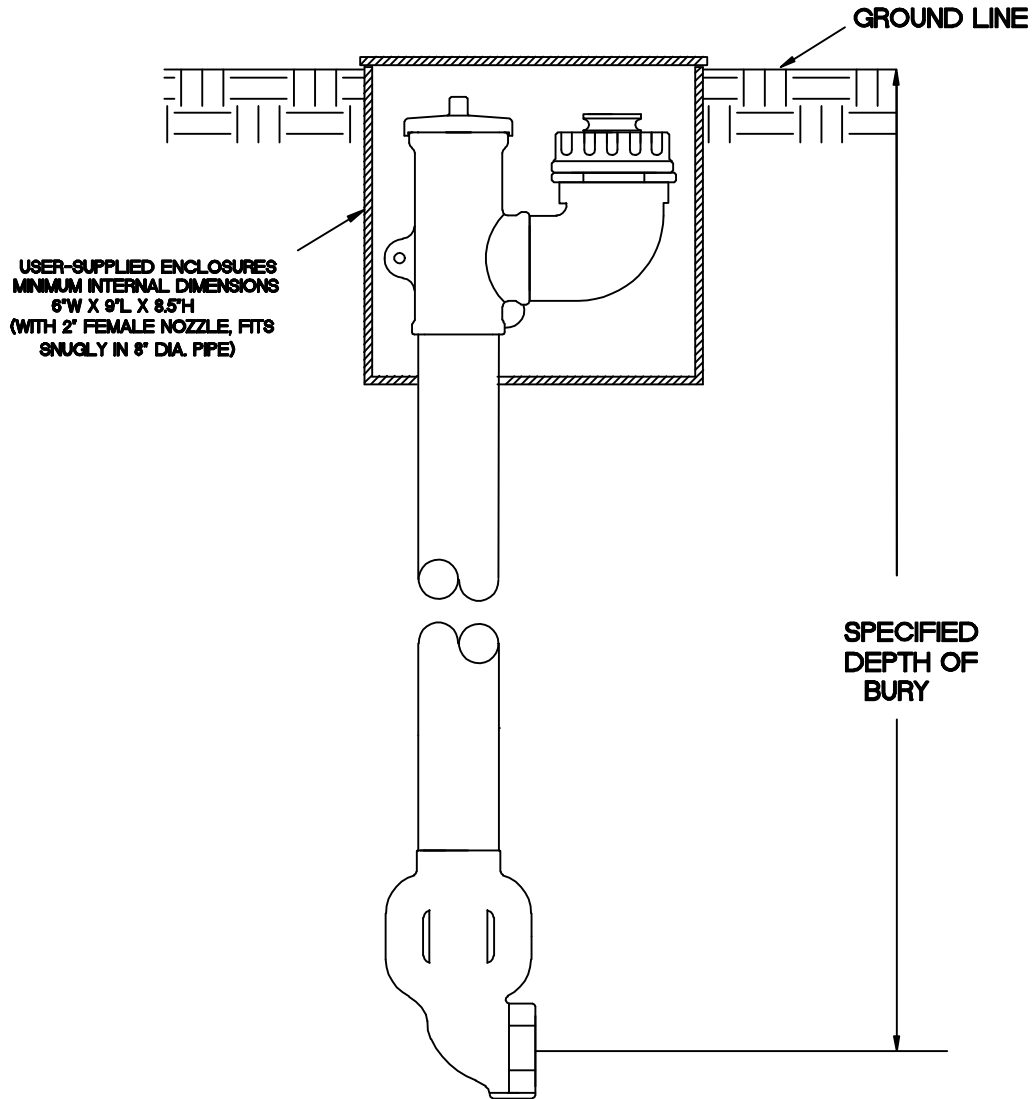


TF250 HYDRANT 90 DEGREE OUTLET



Hydrant shall be ____' bury, with (2' Vertical FIP 2' Horizontal FIP 2' MJ) inlet and (any size up to 2-1/2') NST nozzle outlet positioned at (45 degrees / 90 degrees).

Hydrant shall be non-freezing and self-draining. Hydrant shall be operated by turning a top-mounted 9/16" square operating nut counterclockwise to open, clockwise to close. Hydrant must seal the drain outlet in all positions from 1/4-open to fully-open. All working parts shall be serviceable from above ground with no digging required.

All wear parts (o-rings and valve seat) shall be of commonly-available dimensions and materials, and none may be of vendor-unique design.

Hydrant shall be Model TF250 as manufactured by the Kupferle Foundry Company, St. Louis, MO 63102.

DRAWN F.M.
APPROVED
DATE 11-13-12
MAT'L

THIS DRAWING IS THE PROPERTY OF THE KUPFERLE FOUNDRY COMPANY. IT IS NOT TO BE USED OR DUPLICATED WITHOUT PERMISSION OF THE OWNER.

ECLIPSE
Since 1867

KUPFERLE FOUNDRY COMPANY

2511 NORTH 9TH STREET, ST. LOUIS, MO 63102
314-231-8738 800-231-3990 FAX 314-231-2820
<http://www.hydrants.com>

DATE	REVISION	PART NO. #TF250 BLOW-OFF HYDRANT	SHEET 1 OF 1	