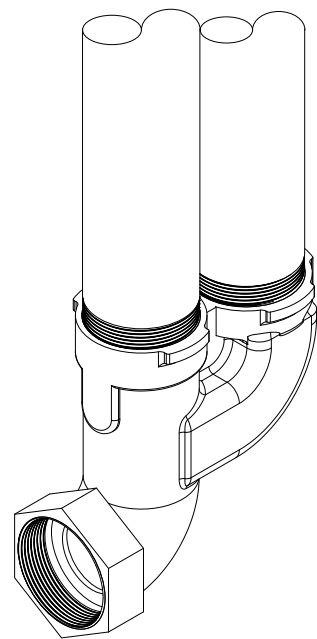


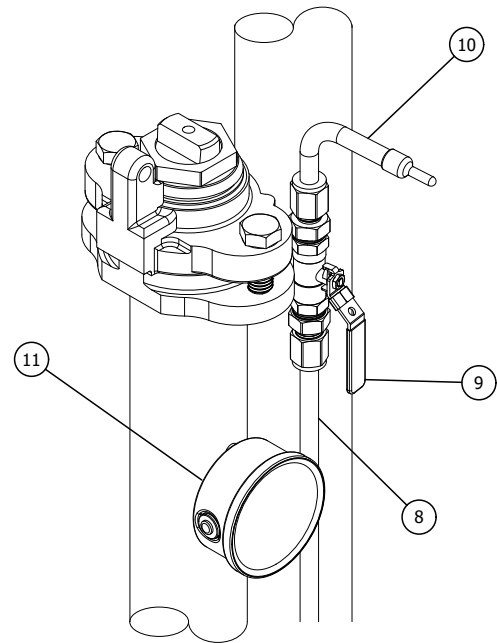
#77-HYB SAMPLING AND FLUSHING HYBRID SPEC SHEET

GENERAL HYDRANT SPECIFICATIONS	
MAXIMUM OPERATING PRESSURE:	220 PSI
INLET MATERIALS:	BUNA-N, C89833 BRASS, PVC
TOP STOCK MATERIAL:	CAST IRON
RISER PIPE MATERIAL:	316 S.S.
WETTED MATERIALS:	BUNA-N, PVC, 304 S.S., 316 S.S. & C89833 BRASS
DEPTH OF BURY:	3' STANDARD
WEIGHT:	TBD LBS



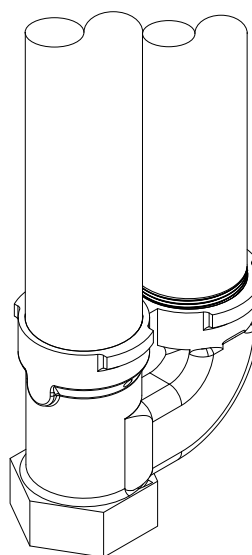
V.1 2" FIP HORIZONTAL INLET

Scale: 3"=1'



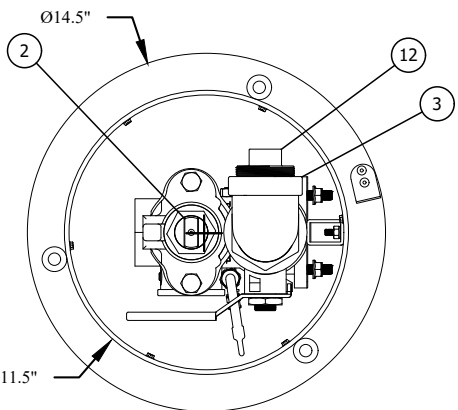
1 OPERATIONAL COMPONENTS

Scale: 3"=1'



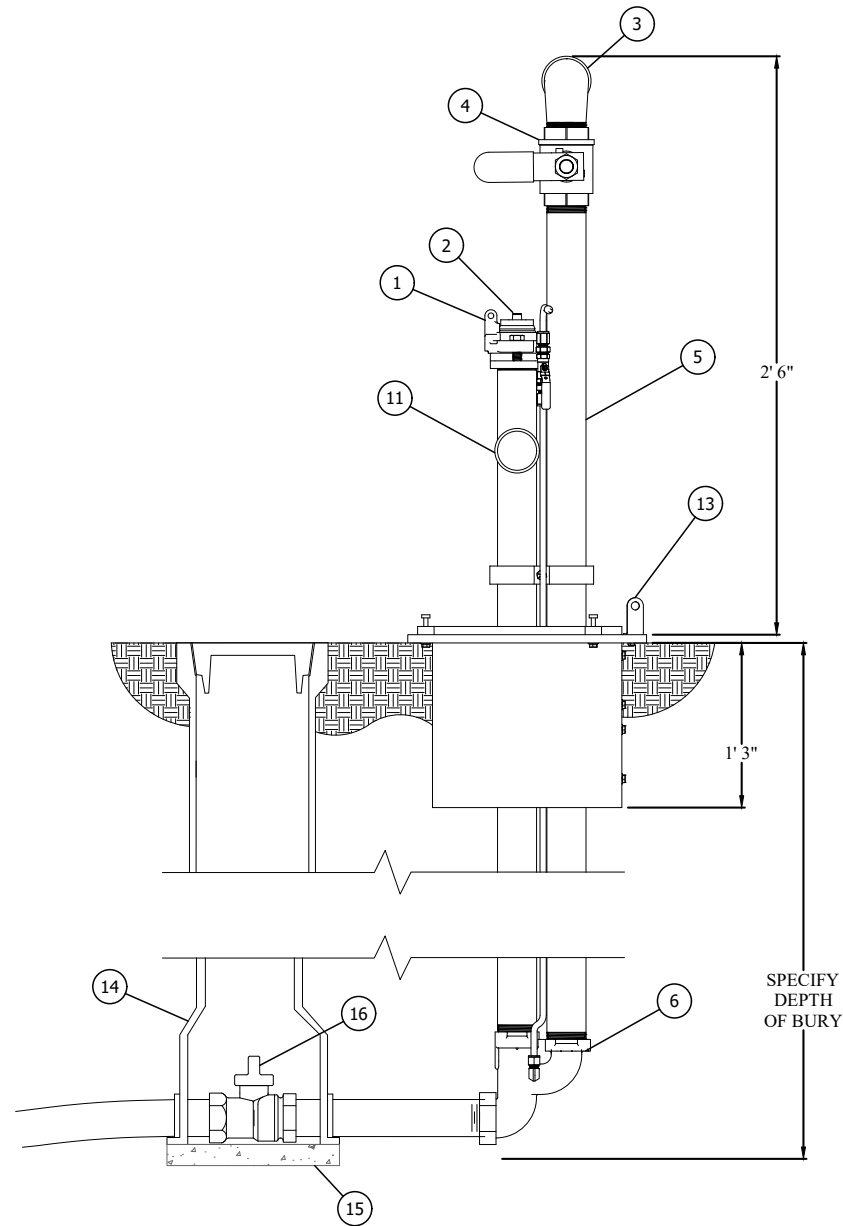
V.2 2" FIP VERTICAL INLET

Scale: 3"=1'



2 PLAN VIEW

Scale: 1 1/2"=1'



3 INSTALL VIEW

Scale: 1"=1'

MAINGUARD Product Ordering Guide					
MODEL#	77-HYB	-	X.X	-	X - X - X - X
SUBSECTION	1		2	3	4 5
SUBSECTION DESCRIPTION	MODEL # SUBSECTION	OPTIONS	DESCRIPTIONS		
MODEL	1	77-HYB	SAMPLING AND FLUSHING HYBRID HYDRANT		
DEPTH OF BURY	2	0.0	X.X = FEET DEPTH OF BURY. ENTER # IN FEET AND INCLUDE INCHES. ROUND TO NEAREST 0.5 FEET		
INLET OPTIONS	3	A	2" FIP HORIZONTAL		
		B	2" FIP VERTICAL		
		C	2" MI INLET		
OPERATING WRENCH	4	X	NONE		
		A	OPERATING WRENCH		
BOLLARD ENCLOSURE OPTIONS	5	BL	STANDARD -BLUE		
		BK	BLACK		
		BR	BROWN		
		GY	GREY		
		GN	GREEN		
		LGY	LIGHT GREY		
		RD	RED		
		WH	WHITE		
		YL	YELLOW		

ITEM	DESCRIPTION	NOTES
1	TOP CAP	
2	SLOTTED OPERATING NUT	
3	2" FIP OUTLET	
4	2" BLOW OFF BALL VALVE	
5	2" STAINLESS STEEL PIPE	
6	INLET VALVE BODY	
7	LOCKING COVER	
8	SAMPLING LINE	
9	SAMPLING BALL VALVE	
10	SAMPLING PORT	
11	PRESSURE GAUGE	
12	2" MIP DISCHARGE PLUG	
13	LOCKING TABS	
14	VALVE BOX	BY OTHERS
15	SOLID CONCRETE BLOCK	BY OTHERS
16	HYDRANT SHUT-OFF VALVE	BY OTHERS

#77-HYB Sampling and Flushing Hybrid (SFH) shall be installed in the following location(s): _____

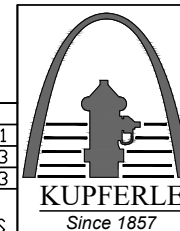
#77-HYB SFH shall be a sampling station and 2" manual flushing hybrid hydrant, utilizing a brass inlet valve and stainless steel discharge and a 3' standard depth of bury. Station shall come with a 3/8" stainless steel sampling bibb. Hydrant shall be furnished with a (2" FIP horizontal or 2" FIP vertical) inlet connection. A non-turning operating rod shall open to the left with 4 to 6 rotations being fully open. A 2" stainless steel ball valve on the discharge pipe, may be closed to facilitate sampling, via the secondary ball valve and the 3/8" stainless steel line without water being flushed. Outlet shall be 2" FIP standard with plug and extend a minimum of 12" above the ground. A ball valve shall be located on the sampling/evacuation line, independent of the blow off ball valve and when open shall allow for evacuation of any water remaining inside the station, via pump or compressed air blow off, to prevent freezing. A pressure gauge is included on the operating pipe, for detection of water in this pipe in the event of an o-ring failure.

All water flow shall pass through a 2" stainless steel pipe and waterway. The operating drive mechanism shall raise and lower a plunger to control the flow of water. Drive mechanism shall be serviceable from above ground with no digging and shall operate with a standard universal slotted valve wrench. All working parts shall be brass, stainless steel or PVC.

Recommendation of the AWWA should be followed when installing the hydrant.

Unit model # shall be #77-HYB as specified in the product ordering guide as manufactured by Kupferle Foundry Company, St. Louis MO, or approved equal.

NOTES	
A	PIPING BY OTHERS.
B	FLUSH LINE BEFORE INSTALLATION.
C	GROUND LINE MAY VARY.
D	IN CORROSIVE SOLIDS THE BURIED PIPE SHOULD BE PREPPED FOR ADDITIONAL RESISTANCE TO CORROSION. KUPFERLE RECOMMENDS SPRAYING ALL UNDERGROUND PIPING AND FITTINGS WITH BITUMINOUS SPRAY TAR, ALLOWING PROPER TIME TO DRY AND WRAPPING THE PARTS.



2511 NORTH 9TH STREET
ST. LOUIS, MO 63102
1-800-231-3990
FAX 314-231-2820
www.hydrants.com

	INITIALS	DATE
DRAWN	KJW	05/14/21
APPROVED	DCL	01/30/23
MODIFIED	KJW	01/27/23
SHEET SIZE	SCALE	
B (11x17)	VARIOUS	

#77-HYB SFH SPEC SHEET

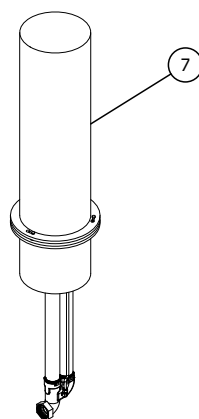
V.1

V.2

E

INSTALL ISO VIEW

Scale: 3/8"=1'



DATE	STATUS / REVISION
05/14/21	NEW RELEASE