

#88-SS CUT SHEET

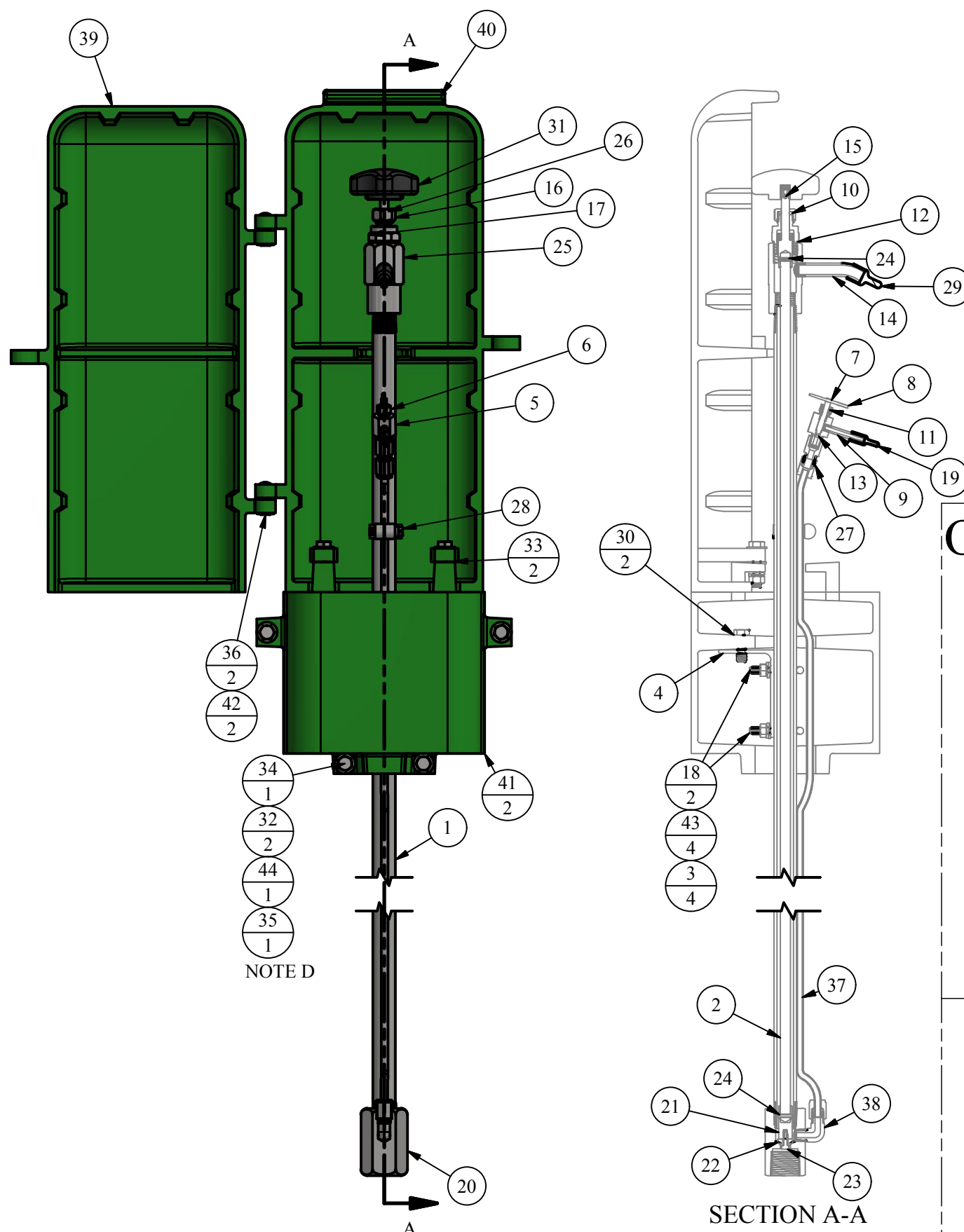
PARTS LIST

ITEM	QTY	PART NUMBER	DESCRIPTION	NOTES
1	4.08	1/2SSP	1/2" S.S. PIPE	B,C
2	4.24	3/8SSR	3/8" S.S. SOLID ROD	B,C
3	4	345-N	1/4"-20 S.S. Hex Nut	
4	0.25	4 ALUM ANGLE	MOUNTING ANGLE	
5	1	66S01	PETCOCK BODY	
6	1	66S02	PETCOCK NUT	
7	1	66S03	PETCOCK PLUNGER	
8	1	66S04	PETCOCK ROD PIN	
9	1	66S05	PETCOCK NOZZLE	
10	1	66S07	O-RING (PACKING NUT)	
11	1	66S08	O-RING (PETCOCK NUT)	
12	1	66S09	O-RING (STEM)	
13	1	66S10	O-RING (PETCOCK PLUNGER)	
14	1	66S12	NOZZLE	C,Q
15	1	66S14	HANDLE/KNOB PIN	C
16	1	66S15	PACKING NUT	
17	1	66S16	HEADSTOCK TOP NUT	
18	2	66S20	S.S. U-BOLT FOR 1/2" PIPE	
19	1	66S22	PETCOCK CAP	C
20	1	66S25	S.S. VALVE BODY	C
21	1	66S26	PLUNGER (COLD CLIMATE)	
22	1	66S27	SEAT RUBBER	C
23	1	66S28	PLUNGER SCREW	C
24	2	66S30	SPRING PIN	
25	1	66S31	HEADSTOCK (COLD CLIMATE)	
26	1	66S32	STEM (COLD CLIMATE)	
27	1	66S33	1/4" COMP. x 1/8" FIP S.S. FITTING	C
28	1	66S34	HOSE CLAMP	
29	1	66S35	NOZZLE CAP	C
30	2	66S41	BOLT FOR BRACKET	
31	1	66S42	KNOB	C
32	10	88-14	ENCLOSURE WASHER	
33	2	88-15	3° WEDGE WASHER	
34	6	88-4	ENCLOSURE BOLT	
35	6	88-5	ENCLOSURE NUT	
36	2	88-6	RIVET FOR 88 COVER	C
37	4	88-7-SS	1/4" S.S. TUBING	B,C
38	1	88-8-SS	1/4" COMP. x 1/8" MIP ELBOW S.S.	C
39	1	88-A	"NEW STYLE" 88 COVER "A"	C,R
40	1	88-B	"NEW STYLE" 88 COVER "B"	C,R
41	2	88-C	"NEW STYLE" 88 BASE	R
42	2	9419	RIVET FLAT WASHER	
43	4	9458	LOCK WASHER FOR U-BOLT	
44	6	9465-88	ENCLOSURE LOCK WASHER	
OPTIONS / REPAIR PARTS ONLY				
45	0	4FBE	PEDESTAL PIPE - 2.8FT	
46	0	678	COUPLING FOR 88 PEDESTAL	C
47	0	88-22	88 ENCLOSURE GASKET	
48	0	88-23	88 PEDESTAL BOLT	C
49	0	88-A-LOGO	"NEW STYLE" 88 COVER "A" WITH LOGO	A,C,R
50	0	88P-1S	SMALL PUMP	A
51	0	Z88PS	LARGE PUMP	A

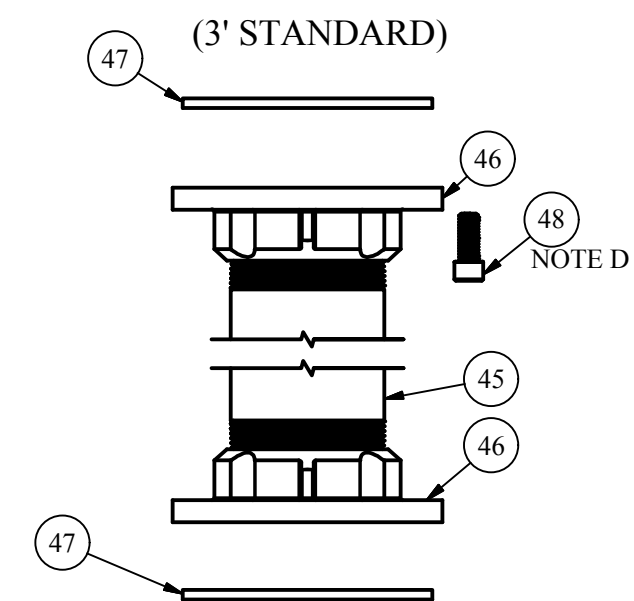
REPAIR KITS

PART NUMBER	DESCRIPTION	PARTS INCLUDED
X66-CCHEADSTOCK	HEADSTOCK ASSEMBLY COMPLETE	66S31 HEADSTOCK (1), 66S12 NOZZLE (1), 66S35 CAP (1)
X66-CC SCREW	COLD CLIMATE TOP SCREW ASSEMBLY	66S42 KNOB (1), 66S14 ROD PIN (1), 66S32 STEM (1), 66S15 PACKING NUT (1), 66S07 PACKING NUT O-RING (1), 66S16 TOP NUT (1), 66S09 STEM O-RING (1)
X66-PETCOCK	S.S. PETCOCK ASSEMBLY	66S01 BODY (1), 66S08 NUT O-RING (1), 66S02 NUT (1), 66S03 PLUNGER (1), 66S10 PLUNGER O-RING (1), 66S04 PIN (1), 66S05 NOZZLE (1), 66S22 CAP (1)
X66-PLUNGER	#66 PLUNGER ASSEMBLY	66S26 PLUNGER (1), 66S27 SEAT RUBBER (1), 66S28 PLUNGER SCREW (1)
X66RK	88-SS REPAIR KIT	66S27 SEAT RUBBER (1), 66S28 SCREW (1)
X881	ALUMINUM COVER COMPLETE	88-A FRONT COVER (1), 88-B BACK COVER (1), 88-6-AL RIVETS (2), 9419 FLAT WASHER (2)
X882-66	ALUMINUM BASE COMPLETE	88-C BASE (2), 88-4 BOLT (4), 9465-88 LOCK WASHER (4), 88-5 NUT (4), 4 ALUM ANGLE (0.25), 66S41 BOLT (2), 88-14 WASHER (8)
X883-66	ALUMINUM COVER AND BASE COMPLETE	88-A FRONT COVER (1), 88-B BACK COVER (1), 88-C BASE (2), 88-4 BOLT (6), 88-15 WEDGE WASHER (2), 9465-88 LOCKWASHER (6), 88-5 NUT (6), 88-14 WASHER (12), 4 ALUM ANGLE (0.25), 66S41 BOLT (2), 9419 FLAT WASHER (2)

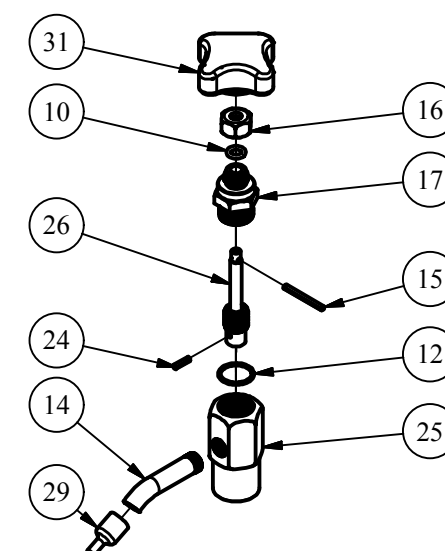
NOTE	DESCRIPTION
A	NOT SHOWN
B	PIPE LENGTH DEPENDENT ON DEPTH OF BURY
C	SOLD AS REPLACEMENT PART
D	BOLT ASSEMBLY USED ON ALL SIMILAR HOLES/BRACKETS
Q	REPLACEMENT NOZZLE REQUIRES BENDING IN THE FIELD AFTER INSTALLATION
R	POWDER COATING OPTIONS AVAILABLE



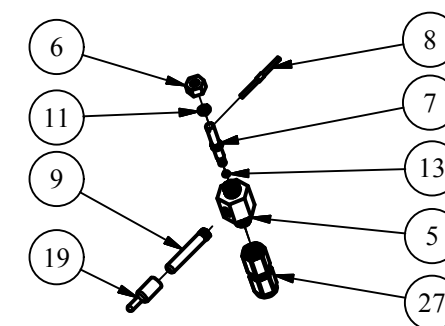
OPTIONAL PEDESTAL



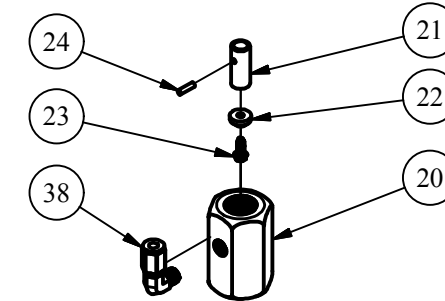
HEADSTOCK ASSEMBLY



PETCOCK ASSEMBLY



VALVE ASSEMBLY



LEGEND

- (X) → STANDARD TAG
- (X/Y) → TAG WITH Y QUANTITY

DISCLAIMER
THIS DRAWING IS THE PROPERTY OF THE KUPFERLE FOUNDRY COMPANY. IT IS NOT TO BE USED OR DUPLICATED WITHOUT THE PERMISSION OF THE OWNER.

DRAWN	7/7/2017
SMS	
CHECKED	
DCL	9/11/2017
MODIFIED	
SIZE	SCALE
C	1 / 5
DWG NO	#88-SS Cut_Rev0



2511 NORTH 9TH ST.
ST. LOUIS, MO 63102
1-800-231-3990

SHEET	REV
1 OF 1	0