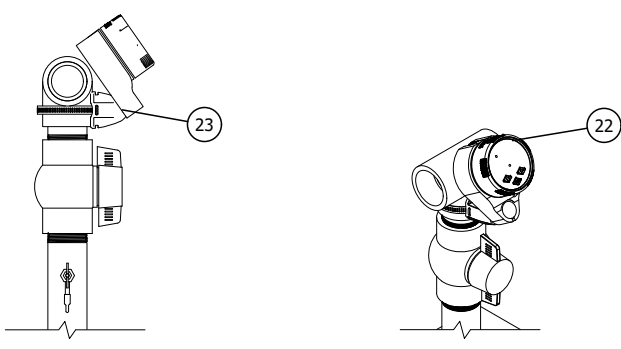


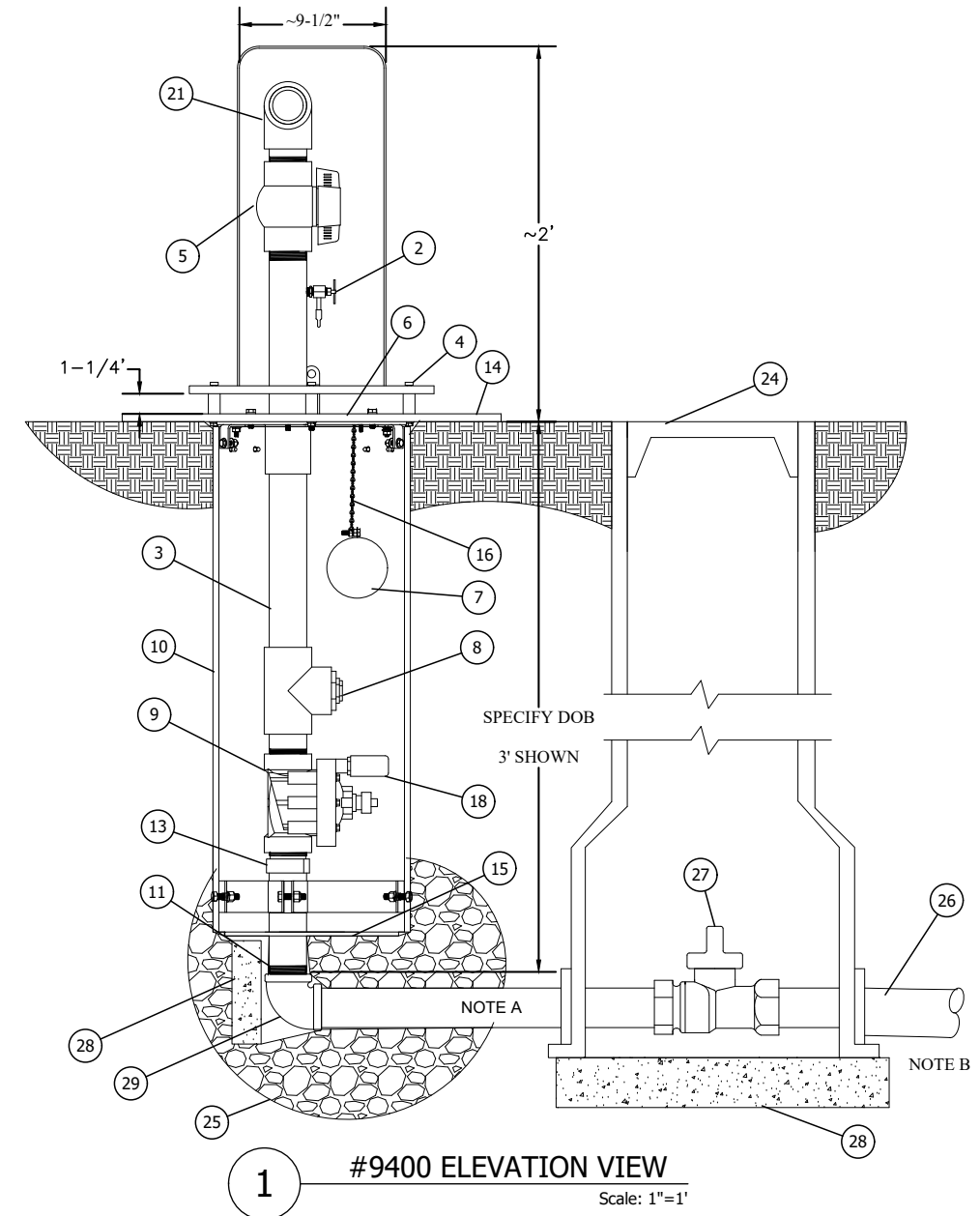
#9400 AUTOMATIC FLUSHING STATION SPEC SHEET

GENERAL HYDRANT SPECIFICATIONS	
MAXIMUM OPERATING PRESSURE:	220 PSI
ENCLOSURE MATERIAL:	UV RESISTANT HDPE
ENCLOSURE COLOR:	BLACK BASE WITH LIGHT GREY LID
WETTED MATERIALS:	TEFLON, EPDM, 316 S.S., CF8M S.S., BUNA-N
WEIGHT:	~60 LBS
CERTIFICATION:	NSF 372

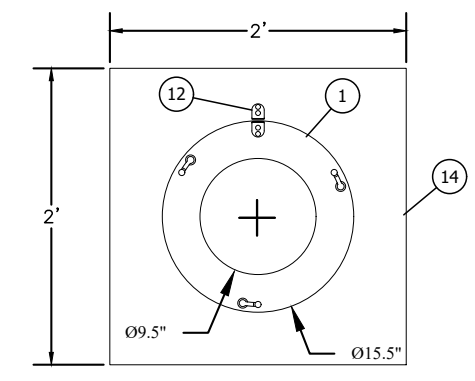
Automatic Product Ordering Guide										
MODEL#	9400	-	1	-	ND	030	-	1	GR	00
SUBSECTION	1	2	3	4	5	6	7			
SUBSECTION DESCRIPTION	MODEL #	SUBSECTION	OPTIONS	DESCRIPTIONS						
MODEL	1		9400	AUTOMATIC FLUSHING DEVICE						
UPPER ASSEMBLY	2		1	STANDARD						
CONTROLLER TYPE	3		ND	STANDARD						
			BT	BLUETOOTH						
DEPTH OF BURY	4		###	X.X = FEET DEPTH OF BURY. ROUNDED TO NEAREST 0.5 FOOT. 035 = 3-1/2' DOB						
LOWER ASSEMBLY	5		1	STANDARD, PVC RISER PIPE						
			2	STAINLESS STEEL RISER PIPE						
ENCLOSURE COLOR	6		GY	GREY						
			GN	GREEN						
			XX	CALL FOR OTHER COLOR OPTIONS						
CUSTOM OPTIONS	7		00	NONE						
			01	DECHLORE BASKET						
			02	DEBRIS FLUSHING ARM						



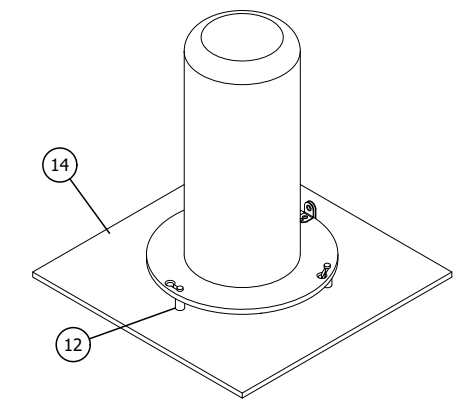
A OPTIONAL BLUETOOTH CONTROLLER
Scale: 1"=1'



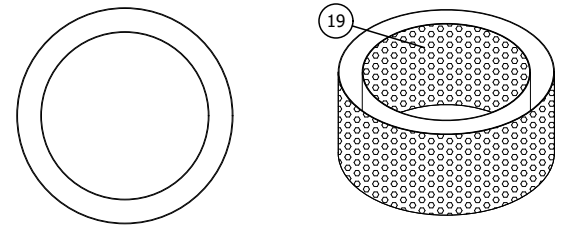
1 #9400 ELEVATION VIEW
Scale: 1"=1'



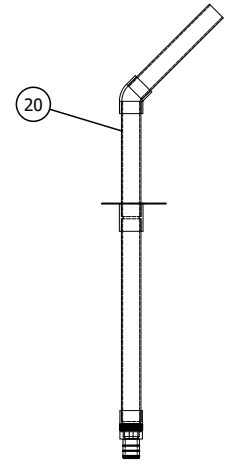
2 PLAN VIEW
Scale: 1"=1'



3 ABOVE GROUND VIEW
Scale: 1"=1'



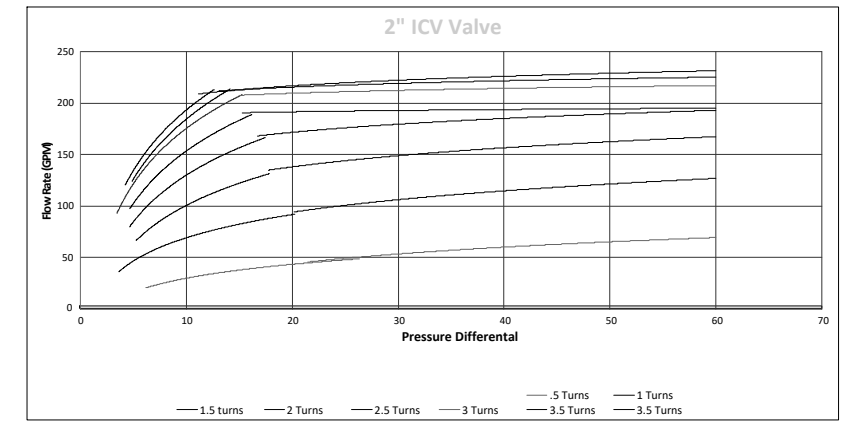
B OPTIONAL DECHLORINATION BASKET
Scale: 1-1/2"=1'



C 9400 DEBRIS FLUSHING PIPE ACCESSORY
Scale: 1/2"=1'

OTHER SPECIFICATIONS AVAILABLE UPON REQUEST

ITEM	DESCRIPTION	NOTES
1	UV RESISTANT LOCKABLE COVER	
2	SAMPLING POINT	
3	2" SCH 80 PVC PIPE	
4	STANDOFF PINS	
5	2" WATER FLOW RESTRICTOR	
6	REMOVABLE ACCESS PLATE	
7	CONTROLLER	
8	AUTOMATIC DRAIN	
9	2" FLUSHING VALVE	
10	SDR 35 BARREL PROTECTOR	
11	2" SS MIP INLET	
12	PADLOCKABLE TABS	
13	O-RING CONNECTOR	
14	GROUND PLATFORM PLATE	
15	DEBRIS PLATE	
16	STANDARD CONTROLLER MOUNT	
17	UNUSED	
18	DC LATCHING SOLENOID	
19	DECHLORE BASKET	OPTIONAL
20	DEBRIS FLUSHING PIPE	OPTIONAL
21	DISCHARGE TEE	
22	BLUETOOTH CONTROLLER	OPTIONAL
23	BLUETOOTH CONTROLLER MOUNT	OPTIONAL
24	VALVE BOX	BY OTHERS
25	1" CLEAN ROCK	BY OTHERS
26	2" SUPPLY LINE	BY OTHERS
27	ISOLATION VALVE	BY OTHERS
28	CONCRETE BLOCK	BY OTHERS
29	ELBOW	BY OTHERS



Automatic Flushing Station (AFS) shall be installed in the following location(s): _____

Automatic flushing device shall have a 2" stainless steel MIP inlet will lead vertically to the bottom of a 2" automatic flushing valve. The flushing valve shall control the flow of water through the hydrant and its diaphragm with the extension and retraction of a DC latching solenoid and have a 220 PSI rating.

Each unit shall be furnished with a stand-alone valve controller. The valve controller will not require a second hand-held device for programming. Controller must have minimum of 12 possible flushing cycles per day. Controller shall be submersible to 12 feet, operate with a 9 volt battery, and have resin-sealed electrical components. An optional Bluetooth controller allows for the use of a smartphone/tablet to program and operate the controller and uses two 9 volt lithium ion batteries. The solenoid shall have no loose parts when removed from the valve.

Removal of the 2" valve shall be possible via an o-ring piston connector located under the valve after removal of a stainless steel access plate, to allow for easy maintenance/replacement of all operating parts of the hydrant.

Each unit shall have an all stainless steel sampling point located on the hydrant before the 2" flushing valve.

Unit shall allow for the installation of dechlorination options.

Valve assembly shall be housed in a UV-Resistant lockable cover. Cover shall utilize positive alignment pins that lock the pins in place. Padlockable tabs shall allow for up to 3/8" shackles to be used.

Kupferle recommends the installation of an isolation valve prior to the autoflusher for maintenance purposes.

Recommendations of the AWWA should be followed when installing the hydrant.

Unit model # shall be 9400 as manufactured by Kupferle Water Solutions, St. Louis MO, or approved equal.

NOTES	
A	PIPING BY OTHERS
B	FLUSH LINE BEFORE INSTALLATION OF THE HYDRANT
C	GROUND LINE MAY VARY

	INITIALS	DATE
DRAWN	KJW	09/10/24
APPROVED	DCL	09/10/24
MODIFIED		

2511 NORTH 9TH STREET
ST. LOUIS, MO 63102
1-800-231-3990
FAX 314-231-2820
www.hydrants.com

KUPFERLE
WATER SOLUTIONS

PATENTED

DATE	STATUS / REVISION