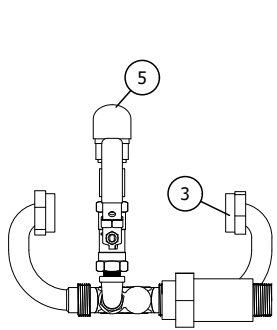
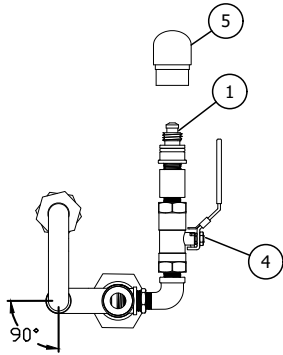


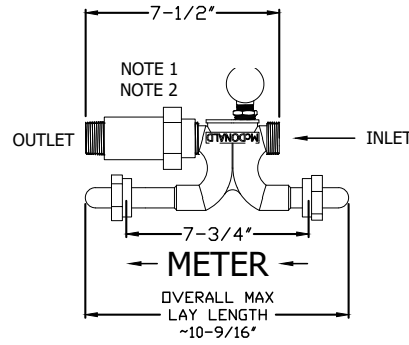
#94WM-FxT METER (5/8" x 3/4") RESETTER SAMPLING STATION SPEC SHEET



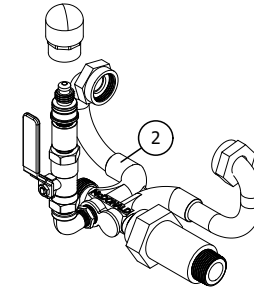
A FRONT VIEW
Scale: 1 1/2"=1'-0"



B SIDE HORN ANGLE VIEW
Scale: 1 1/2"=1'-0"



C WATER FLOW VIEW
Scale: 1 1/2"=1'-0"



D ISOMETRIC VIEW
Scale: 1 1/2"=1'-0"



E LAY LENGTH OPTIONS
Scale: 1 1/2"=1'-0"

#94WM-FxT Meter (5/8" x 3/4") Resetter Sampling Station Spec Sheet shall be installed in the following location(s):

Meter Resetter Sampling Station shall be meter box retrofit style for a 5/8" x 3/4" meter, with 1" NPS threaded inlet and outlet, both with a face for gasket seal. If desired the dual check valve (brass body) can be replaced with an idler/spacer option to be located between the water meter and residence.

The angle between the horns and body are fixed at 90 deg, with other angles available upon request. Kupferle also offers #95WM which features a PVC body with horns that can rotate 180 to accommodate different angles as needed.

To perform sampling, a portable rod (Kupferle Part # Z94PR) with a female coupler will thread onto the S.S. male spring loaded piston valve (#1) connected to the meter setter. This connection shall require a turning motion only, with no pushing or pulling necessary. Male valve shall be located before the water meter, have an auxiliary shut-off valve, and be protected by a PVC cover when not in use.

Unit model # shall be 94WM-FxT-S-BD as specified in the product ordering guide as manufactured by Kupferle Foundry Company, St. Louis MO, or approved equal.

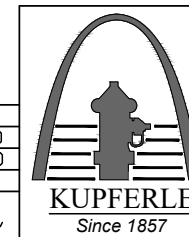
ITEM	DESCRIPTION
1	S.S. MALE SPRING LOADED SAMPLING VALVE
2	94WM BODY (5/8" x 1/2")
3	3/4" EPDM RUBBER METER GASKET
4	3/8" LOCKABLE BALL VALVE
5	PVC COVER WITH CAP

RESETTER PRODUCT ORDERING GUIDE									
MODEL#	94WM	-	FxT	-	S	-	BD		
SUBSECTION	1		2		3		4		
SUBSECTION DESCRIPTION	MODEL #	SUBSECTION	OPTIONS	DESCRIPTIONS					
MODEL		1	94WM	BRASS RESETTER					
SIZE		2	ONE	1" METER					
			FxT	5/8" x 3/4" METER					
			FxH	5/8" x 1/2" METER					
SAMPLING OPTIONS		3	S	STANDARD SAMPLING ASSEMBLY					
			N	NONE (RESETTER CONFIGURATION)					
LAY LENGTH OPTIONS		4	N	NONE					
			BD	BRASS DUAL CHECK VALVE (INLINE)					
			BI	BRASS IDLER					
			PI	PVC IDLER					

- NOTES:
- THE DUAL CHECK VALVE:
 - A.Y. MCDONALD (BRASS) DUAL CHECK MANUFACTURED IN COMPLIANCE WITH ANSI/ASSE 1024 AND COMPLIANT WITH USA PUBLIC LAW 111-380 AND IDENTIFIED WITH "NL".
 - IDLER OPTIONAL WITH DIFFERENT BODY STYLES AVAILABLE (PVC OR BRASS):
 - KUPFERLE (PVC) IDLER
 - A.Y. MCDONALD (BRASS) IDLER COMPLIANT WITH USA PUBLIC LAW 111-380 AND IDENTIFIED WITH "NL".

		MAXIMUM WORKING WATER PRESSURE: 175 PSI
		TEMPERATURE RANGE: 32° TO 140°F
10/13/20	ISSUED FOR REFERENCE	
DATE	STATUS / REVISION	

	INITIALS	DATE
DRAWN	DCL	10/13/20
APPROVED	DCL	10/30/20
MODIFIED		
	SHEET SIZE	SCALE
	A (11x8.5)	1-1/2"=1'



2511 NORTH 9TH STREET
ST. LOUIS, MO 63102
1-800-231-3990
FAX 314-231-2820
www.hydrants.com