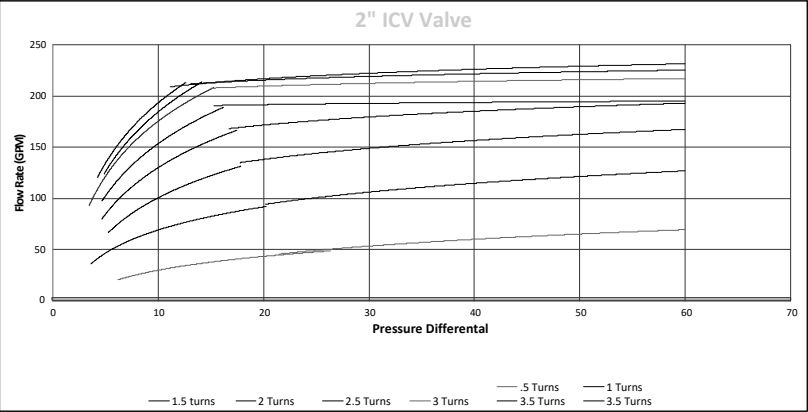


#9800WC AUTOMATIC FLUSHING STATION SPEC SHEET

GENERAL HYDRANT SPECIFICATIONS	
MAXIMUM OPERATING PRESSURE:	220 PSI
HYDRANT MATERIALS:	303, 316, AND 18-8 STAINLESS STEEL, SCH. 80 PVC
ENCLOSURE MATERIAL:	UV RESISTANT PLASTIC
ENCLOSURE COLOR:	BLACK BASE WITH GREEN LID
WETTED MATERIALS:	SCH. 80 PVC, TEFLON, EPDM, 316 S.S.
DEPTH OF BURY:	1'
WEIGHT:	~30 LBS

Automatic Product Ordering Guide													
MODEL#	9800	-	WC	-	0	-	A	-	X	-	A	-	X
SUBSECTION	1		2		3		4		5		6		7
SUBSECTION DESCRIPTION	MODEL # SUBSECTION		OPTIONS		DESCRIPTIONS								
MODEL	1		9800		AUTOMATIC FLUSHING DEVICE								
CLIMATE	2		WC		WARM CLIMATES								
DEPTH OF BURY	3		0.0		X.X = FEET DEPTH OF BURY. ENTER # IN FEET AND INCLUDE INCHES. ROUND TO NEAREST 0.5 FOOT.								
SAMPLING OPTIONS	4		A		1/4" COPPER GOOSENECK								
			B		STAINLESS STEEL PETCOCK								
			C		92-V SAMPLING VALVE								
ABOVE GRADE BALL VALVE	5		X		NONE								
			A		BALL VALVE								
OUTLET OPTIONS	6		A		6" SEWER PIPE COUPLING								
			B		6" X 4" SEWER PIPE REDUCER								
			C		2" DUCKBILL VALVE								
			D		6" SDR 35 x PVC SCH 40 COUPLING								
			E		S.S. TEMPERATURE ACTIVATED WATER RELIEF VALVE								
DECHLORINATION	7		X		NONE								
			A		SYPHON STYLE								
			B		OUTLET BASKET								
			C		IN-LINE BASKET								

ITEM	DESCRIPTION	NOTES
1	UV RESISTANT LOCKABLE LID	
2	DC LATCHING SOLENOID	
3	2" AUTOMATIC FLUSHING VALVE	
4	BRASS NEEDLE VALVE	
5	1/4" COPPER TUBING	
6	2" PIPE CLAMP	
7	6" SEWER PIPE OUTLET	
8	2" S.S. QUICK DISCONNECTS	
9	2" MIP INLET	
10	STREAM SHAPER	
11	VALVE CONTROLLER	



Automatic Flushing Station (AFS) shall be installed in the following location(s): \_\_\_\_\_

Automatic flushing station shall have a 2" stainless steel MIP inlet that will lead vertically through a pair of stainless steel quick disconnects to the 2" automatic flushing valve. The flushing valve shall control the flow of the water through the hydrant and its diaphragm with the extension and retraction of a DC latching solenoid. The valve shall have a 220 PSI rating. All flushed water shall be directed via a stream shaper to reduce the residual water spray in the enclosure.

Each unit shall be furnished with a stand alone valve controller. The valve controller will not require a second hand-held device for programming. Controller must have a minimum of 12 possible flushing cycles per day. Controller shall be submersible up to 12 feet, operate with two 9 volt batteries, and have resin sealed electrical components. The solenoid shall have no loose parts when removed from the valve.

The removal of the 2" valve shall be possible via a pair of above-ground stainless steel quick disconnects to allow for easy removal of all the operating parts of the hydrant. The flushing valve shall be installed at 45° to allow the removal of the solenoid and cap for routine maintenance purposes.

Each unit shall have a dedicated sampling point on the hydrant located before the 2" flushing valve.

Unit shall allow for the installation of dechlorination options.

Valve assembly shall be housed in a UV resistant lockable enclosure with a removable cover.

Unit model # shall be 9800WC as specified in the product ordering guide as manufactured by Kupferle Foundry Company, St. Louis MO, or approved equal.

NOTES	
A	PIPING BY OTHERS
B	KUPFERLE RECOMMENDS THE INSTALLATION OF A PEE TRAP ON THE DRAIN PART OF THE HYDRANT.
C	GROUND LINE MAY VARY
D	DRAIN TO BE DESIGNED TO HANDLE FULL FLOW APPROPRIATELY, UNDERSIZED OUTLET MAY RESULT IN RESIDUAL SPLASHING

#9800WC SPEC SHEET

INITIALS		DATE
DRAWN	SMS	10/1/18
APPROVED	DCL	10/4/18
MODIFIED	ADC	2/20/23
SHEET SIZE		SCALE
B (11x17)		VARIES

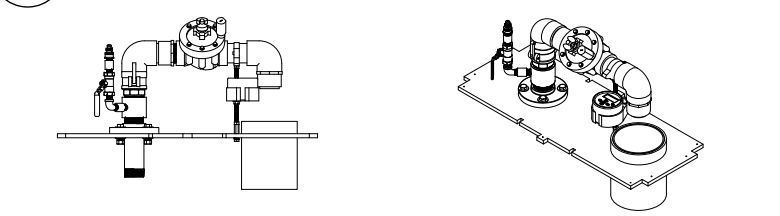


2511 NORTH 9TH STREET  
ST. LOUIS, MO 63102  
1-800-231-3990  
FAX 314-231-2820  
www.hydrants.com

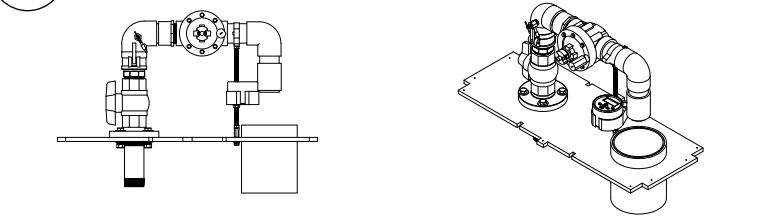
SHEET 1 OF 1

PATENTED

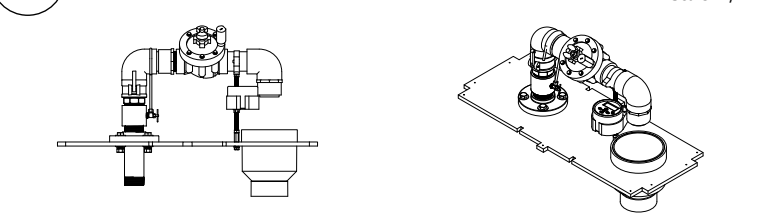
A 9800WC w/ PETCOCK OPTION VIEWS  
Scale: 1/2"=1'



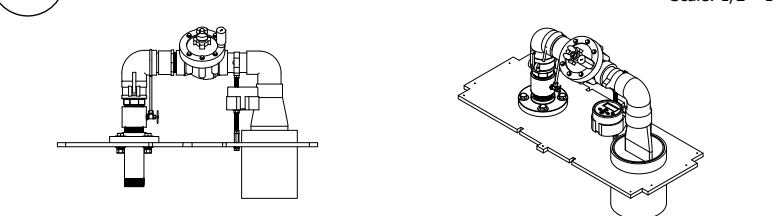
B 9800WC w/ 92-V OPTION VIEWS  
Scale: 1/2"=1'



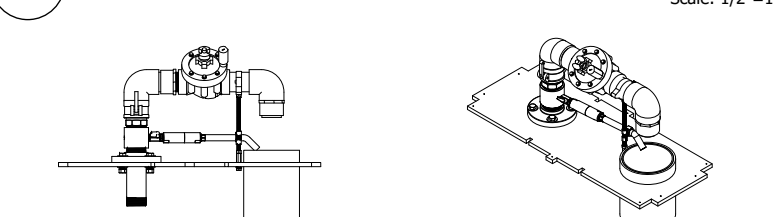
C 9800WC w/ BALL VALVE OPTION VIEWS  
Scale: 1/2"=1'



D 9800WC w/ DRAIN REDUCER OPTION VIEWS  
Scale: 1/2"=1'



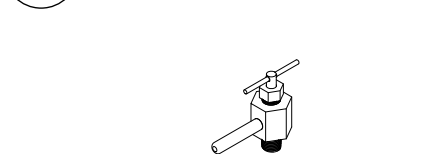
E 9800WC w/ DUCKBILL OPTION VIEWS  
Scale: 1/2"=1'



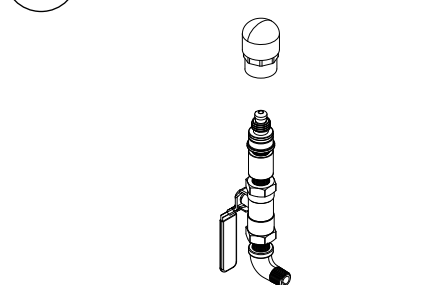
I 9800WC w/ANTI FREEZE VALVE OPTION VIEWS  
Scale: 1/2"=1'

DATE	STATUS / REVISION

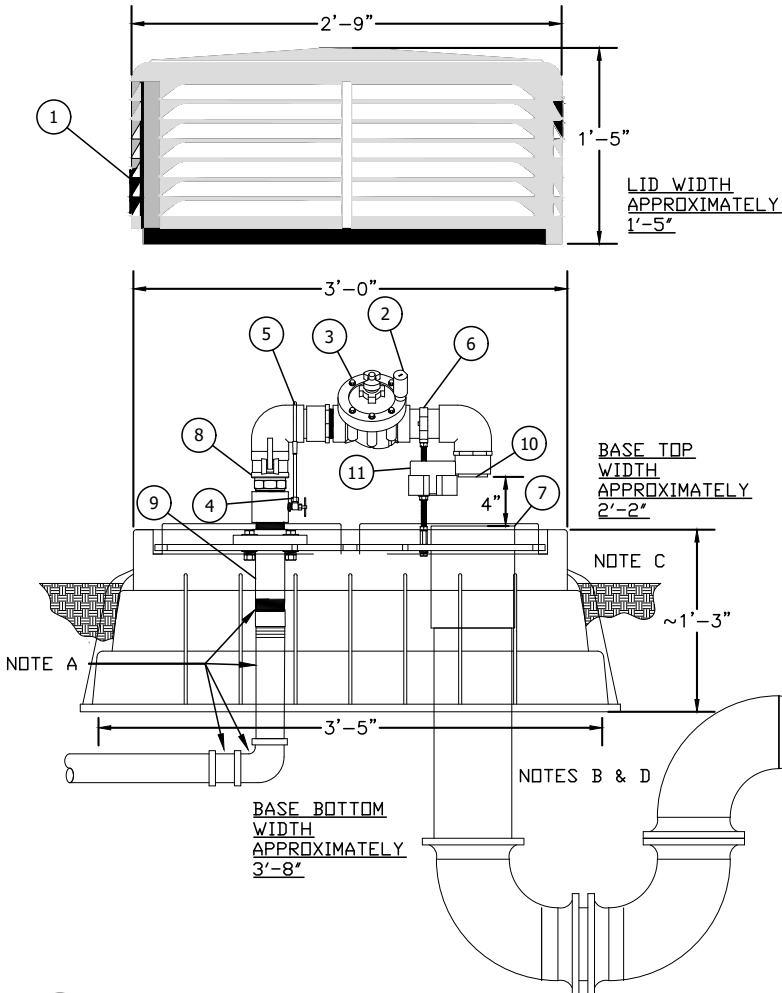
F STREAM SHAPER VIEW  
Scale: 3"=1'



G PETCOCK VIEW  
Scale: 3"=1'



H 92-V VIEW  
Scale: 1-1/2"=1'



1 #9800WC STANDARD INSTALL VIEW  
Scale: 3"=1'