

# #1 (3/4") CUT SHEET

## PARTS LIST

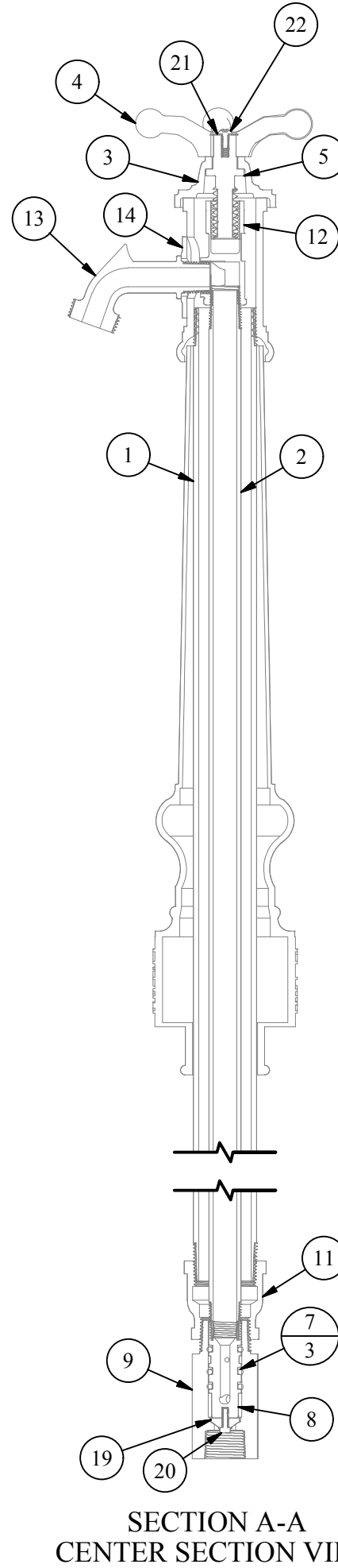
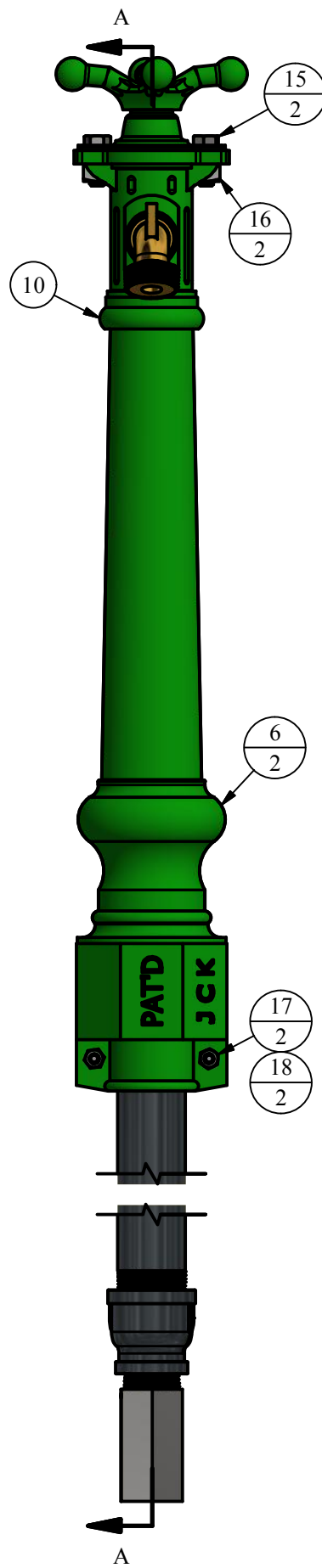
ITEM	QTY	PART NUMBER	DESCRIPTION	NOTES
1	4.16	1 1/4P	1-1/4" STEEL PIPE	B,C
2	4.29	1/2P	1/2" STEEL PIPE	B,C,I
3	1	124	3/4" IRON TOP CAP	C
4	1	134	IRON HANDLE	C
5	1	137	3/4" OPERATING SCREW	C
6	2	182	CASING GUARD	C
7	3	2OR	3/4" PLUNGER O-RING (DRAIN)	
8	1	305	"S.S. 300 STYLE" 3/4" PLUNGER	C,I
9	1	306	"S.S. 300 STYLE" 3/4" VALVE	C,I
10	1	315	3/4" IRON NECK	C
11	1	317	1-1/4" x 1" S.S. BELL REDUCER	I
12	1	318	3/4" BRASS NOZZLE COUPLING	C
13	1	320	3/4" BRASS NOZZLE	C
14	1	322	3/4" SLIDE	C
15	2	344-B	TOP CAP BOLT	C
16	2	344-N	TOP CAP NUT	C
17	2	345-N	HYDRANT CASE NUT	C
18	2	345-S	HYDRANT CASE SCREW	C
19	1	418-B	SEAT RUBBER	
20	1	66S28	PLUNGER SCREW	C
21	1	88-24	WASHER FOR HANDLE/SCREW	C
22	1	9452-88	SCREW FOR HANDLE/SCREW	C

## OPTIONAL PARTS LIST

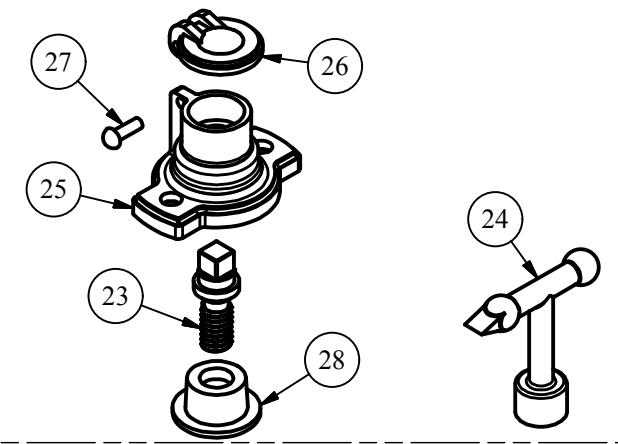
23	0	141	3/4" BRASS SCREW	C
24	0	159	IRON KEY	C
25	0	350	TOP CAP (KEY OPERATED)	
26	0	351C	COVER (KEY OPERATED)	
27	0	442	RIVET	
28	0	460	IRON THIMBLE	

## OLD STYLE PARTS LIST

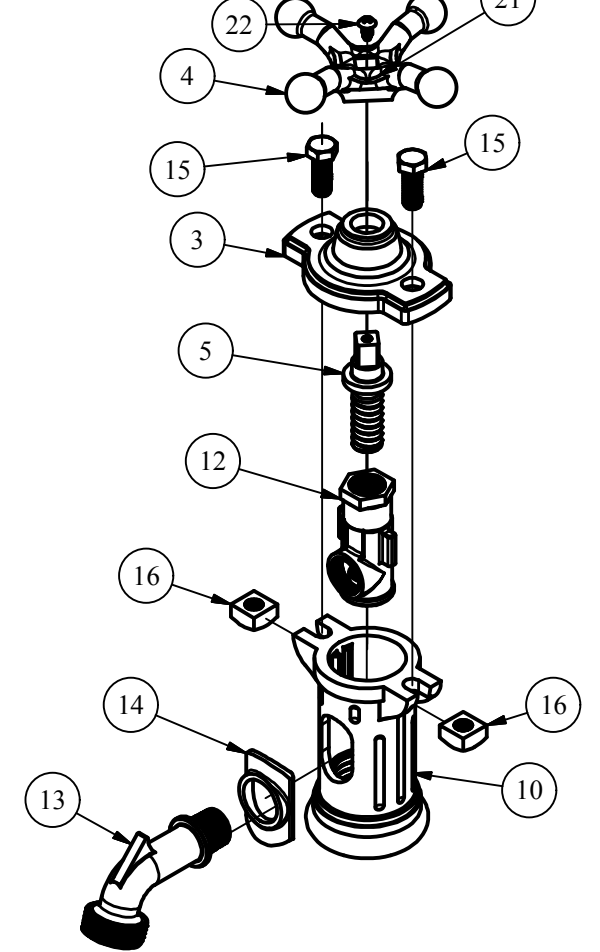
29		10220	BOTTOM O-RING	
30		10508	S.S. WASHER	
31		307	PLUNGER	
32		307-NS	"NEW STYLE" 3/4" PLUNGER	
33		309	CONE WASHER	
34		310	WING NUT	
35		311	BRASS NUT	
36		325	BIG CUP LEATHER	
37		327	SMALL CUP LEATHER	
38		327-E	PLUNGER O-RING (BARREL)	
39		327B	TOP O-RING	
40		328	SEAT WASHER	



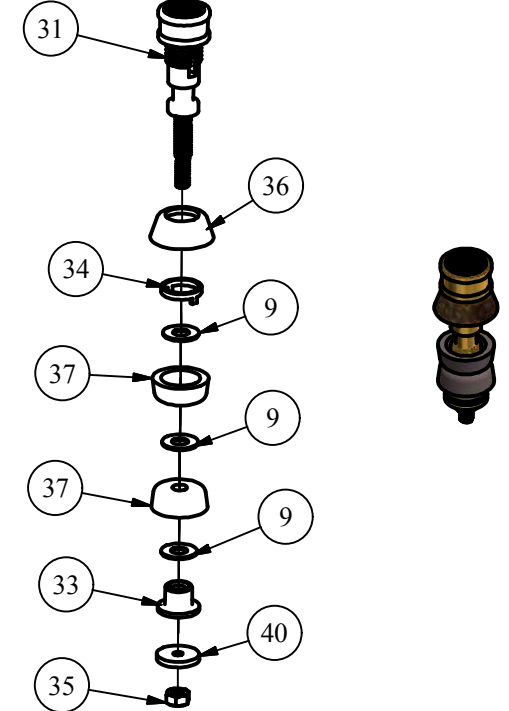
## OPTIONAL IRON CAP



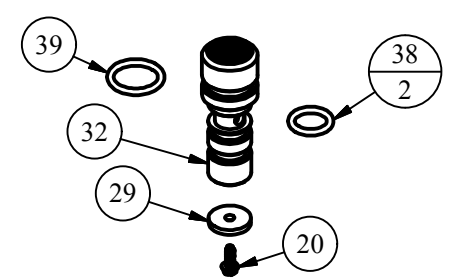
## TOP STOCK ASSEMBLY



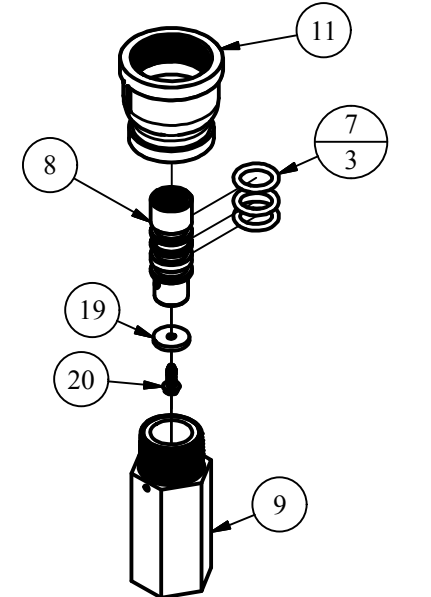
## X305 ASSEMBLY



## X305NS ASSEMBLY



## VALVE ASSEMBLY



## REPAIR KITS

PART NUMBER	DESCRIPTION	PARTS INCLUDED
X130	3/4" CAP, HANDLE, SCREW COMPLETE	134 HANDLE (1), 9452-88 SCREW (1), 88-24 WASHER (1), 137 OPERATING SCREW (1), 124 TOP CAP (1), 344-N NUT (2), 344-B BOLT (2)
X305-2018	S.S. VALVE PLUNGER	305 S.S. VALVE PLUNGER (1), 2OR O-RING (3), 66S28 SEAT RUBBER SCREW(1), 418-B SEAT RUBBER (1)
XFIG.A-2018	S.S. VALVE REPAIR KIT	2OR O-RING (3), 418-B SEAT RUBBER (1)

## OPTIONAL REPAIR KITS

X350	3/4" KEY OPERATED YARD HYDRANT TOP CAP COMPLETE	350 CAP (1), 351C COVER (1), 442 RIVET (1), 344-B BOLT (2), 344-N NUT (2), 460 THIMBLE
------	---	--

## OLD STYLE REPAIR KITS

X305	"OLD STYLE" 3/4" PLUNGER COMPLETE (LEATHERS)	307 PLUNGER (1), 309 CONE WASHER (1), 310 WING NUT (1), 325 CUP LEATHER (1), 327 CUP LEATHER (2), 328 SEAT WASHER (1), 10506 WASHER (3), 311 NUT (1)
X305NS	"NEW STYLE" 3/4" PLUNGER COMPLETE	307-NS PLUNGER (1), 327E O-RING (1), 2OR O-RING (2), 328 SEAT WASHER (1), 66S28 SCREW (1)
XFIG.A	VALVE WASHER SET "OLD STYLE" 3/4" #1	325 CUP LEATHER (1), 327 CUP LEATHER (2), 328 SEAT WASHER (1)
XFIG.A-2012	"NEW STYLE" VALVE WASHER SET FOR 3/4" #1	327E O-RING (1), 2OR O-RING (2), 328 SEAT WASHER (1)
XFIG.A-NS	VALVE WASHER SET FOR 3/4" (FROM 2002-2011)	327B O-RING (2), 10220 O-RING (2), 328 SEAT WASHER (1)

NOTE	DESCRIPTION
B	PIPE LENGTH DEPENDENT ON DEPTH OF BURY
C	SOLD AS REPLACEMENT PART
H	SEE ONLINE PARTS SHEET FOR #7 PARTS REPLACEMENT
I	RETROFITTING TO S.S. VALVE AND PLUNGER REQUIRES OPERATING ROD MEASUREMENTS AND REPLACEMENT

**DISCLAIMER**  
THIS DRAWING IS THE PROPERTY OF THE KUPFERLE FOUNDRY COMPANY. IT IS NOT TO BE USED OR DUPLICATED WITHOUT THE PERMISSION OF THE OWNER.

## LEGEND

(X)	STANDARD TAG
(X/Y)	TAG WITH Y QUANTITY

DRAWN	11/7/2017
SMS CHECKED	
DCL MODIFIED	2/8/2018

SIZE	SCALE
C	1/4

DWG NO	#1 (3/4") Cut_Rev0
--------	--------------------



SHEET	REV
1 OF 1	0