

Eclipse™ #2

Post Hydrant

NON-FREEZING



- New full-port nozzle
- One or two nozzles
- Any size you wish up to 2½" NST

Available with any depth of bury you desire →

Inlet can be 2", 2½" or 3" iron pipe. Mechanical joints 2", 3" and 4" also available →



← You can replace interior parts without disturbing any connections. Just unbolt the top cap and withdraw the inside working parts

← All hydrants now furnished with a 14mm fusion-bonded epoxy coated steel stand pipe both internally and externally to provide superior corrosion resistance

← Has 2 - 3/16" valve opening

↳ DRAIN

2511 North 9th Street
St. Louis, MO 63102



800-231-3990
www.hydrants.com
info@hydrants.com

THE EASIEST TO SERVICE



UNDO 4 BOLTS



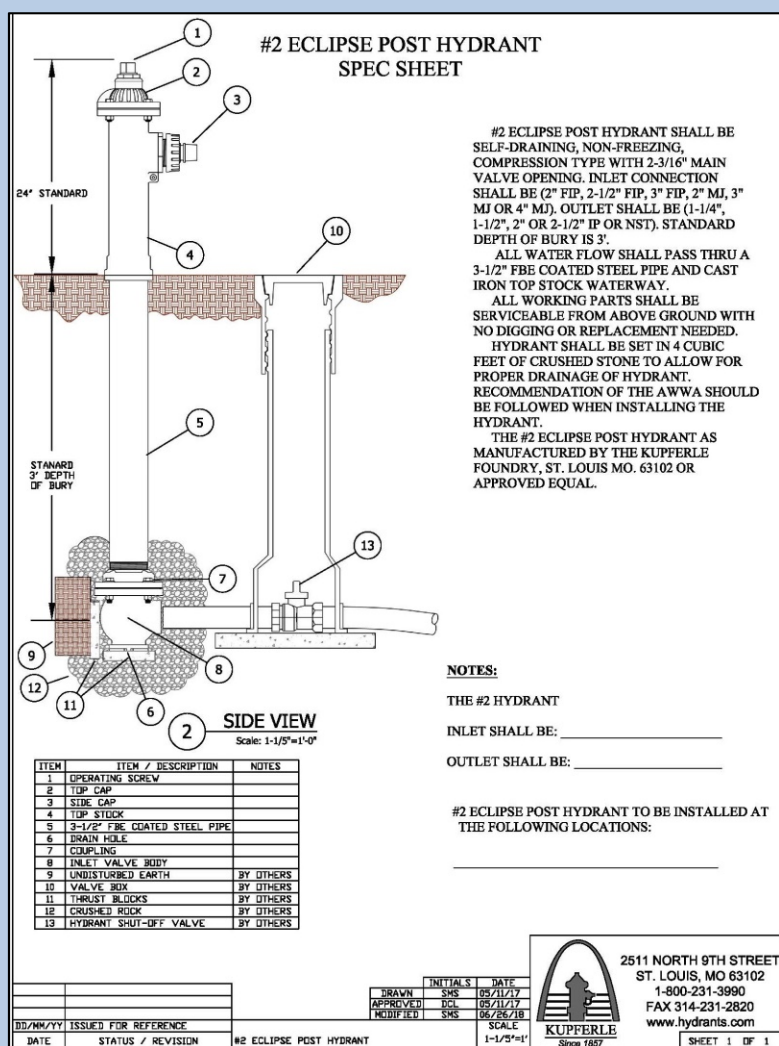
PULL UP TOP CAP



PULL OUT ROD



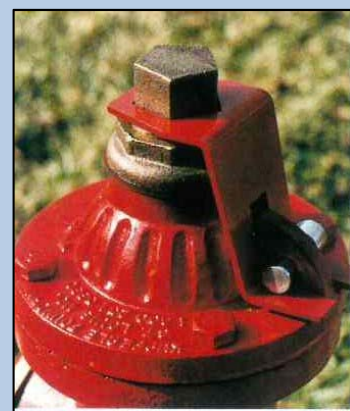
INSPECT PLUNGER



EVERY HYDRANT MARKED WITH
"OPEN" ARROW AND TOLL-FREE
NUMBER



HANDWHEEL
OPTION



LOCKING
WRENCH
OPTION



800-231-3990

www.hydrants.com