

#66 CUT SHEET

PARTS LIST

ITEM	QTY	PART NUMBER	DESCRIPTION	NOTES
1	65.500 in	1/2SSP	1/2" S.S. PIPE	B,C
2	5.500 in	1ALB1	SHELF ALUMINUM SPACER (THIN)	
3	5.500 in	1ALB2	SHELF ALUMINUM SPACER (THICK)	
4	66.500 in	3/8SSR	3/8" S.S. OPERATING ROD	B,C
5	4	345-N	S.S. NUT FOR U-BOLT	
6	2.000 in	4 ALUM ANGLE	MOUNTING BRACKET	
7	1	66S01	PETCOCK BODY	P
8	1	66S02	PETCOCK NUT	P
9	1	66S03	PETCOCK PLUNGER	P
10	1	66S04	HANDLE PIN	P
11	1	66S05	PETCOCK NOZZLE	P
12	1	66S06	NOZZLE (3/8")	
13	1	66S07	O-RING (PACKING NUT)	
14	1	66S08	O-RING (PETCOCK PACKING NUT)	P
15	1	66S09	O-RING (STEM)	
16	1	66S10	O-RING (PETCOCK STEM)	P
17	1	66S13	STEM (WARM CLIMATE)	
18	1	66S14	HANDLE/KNOB PIN	C
19	1	66S15	PACKING NUT	
20	1	66S16	HEADSTOCK TOP NUT	
21	4	66S17	FOAM STRIP	
22	9	66S18	SHORT AL RIVET	
23	4	66S19	MOUNTING BRACKET RIVET	
24	2	66S20	S.S. U-BOLT FOR 1/2" PIPE	
25	2	66S21	HINGE 6in PREDRILLED	
26	1	66S22	PETCOCK CAP	C/P
27	1	66S23	ENCLOSURE LID	R
28	1	66S24	ENCLOSURE DOOR	R
29	1	66S25	VALVE (COLD CLIMATE)	C
30	1	66S26	PLUNGER (COLD CLIMATE)	
31	1	66S27-TF	SEAT WASHER	C
32	1	66S28-20	PLUNGER SCREW	C
33	2	66S30	SPRING PIN	
34	1	66S31	HEADSTOCK (COLD CLIMATE)	
35	1	66S33	S.S. ADAPTER (1/4" COMP. x 1/8" FIP)	C
36	1	66S34	S.S. HOSE CLAMP	
37	1	66S37	PADLOCK HASP	
38	1	66S38	PADLOCK EYE	
39	1	66S42	HANDLE	C
41	3	66S63	ENCLOSURE SHELF RIVET	
42	7	66S90	HASP AND STRIKE PLATE RIVET	
43	48.000 in	6ALSQ	6" ALUMINUM ENCLOSURE	R
44	61.012 in	88-7-SS	1/4" S.S. TUBING	B,C
45	1	88-8-SS	1/4" COMP. x 1/8" MIP S.S. 90° ELBOW	C
46	1	94-K	PLASTIC NOZZLE CAP	
47	2	9458	S.S. LOCKWASHER FOR U-BOLT	

OPTIONAL PARTS LIST

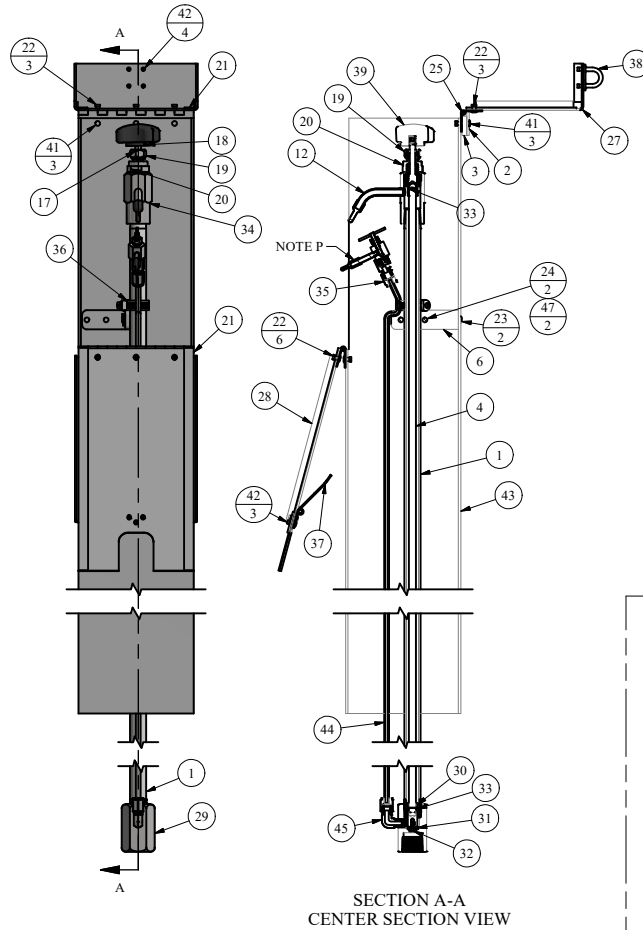
48	0	1 1/2AA	FLANGE FEET (3 RIVETS PER FOOT)	A,R
31	1	66S27-TF	SEAT WASHER	C
32	1	66S28-20	PLUNGER SCREW	C

REPAIR KITS

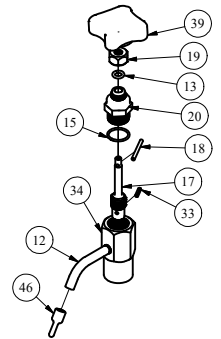
PART NUMBER	DESCRIPTION	PARTS INCLUDED
X66-CC SCREW	COLD CLIMATE TOP SCREW ASSEMBLY	66S42 KNOB (1), 66S14 ROD PIN (1), 66S32 STEM (1), 66S15 PACKING NUT (1), 66S07 NUT O-RING (1), 66S16 TOP NUT (1), 66S09 STEM O-RING (1), 66S30 SPRING PIN (1)
X66-CHEADSTOCK	HEADSTOCK ASSEMBLY COMPLETE	66S31 HEADSTOCK (1), 66S06 NOZZLE (1), 94-K CAP (1)
X66-DOOR	#66 ENCLOSURE DOOR COMPLETE	66S24 DOOR (1), 66S37 HASP (1), 66S90 HASP RIVET (3), 66S21 HINGE (.5), 66S18 HINGE RIVET (6)
X66-HOUSING	#66 ENCLOSURE COMPLETE (NOTE R)	66S23 LID (1), 66S37 HASP (1), 66S24 DOOR (1), 66S38 PADLOCK EYE (1), 66S21 HINGE (0.94 FEET), 66S18 SHORT RIVET (9), 4 ALUM ANGLE (0.2 FEET), 66S19 LONG RIVET (4), 66S17 TRIM (3 FEET), 6ALSQ ENCLOSURE (4 FEET), 1ALB1 SPACER (THIN) (0.42 FEET), 1ALB2 SPACER (THICK) (0.42 FEET), 66S63 SHELF RIVET (3), 66S90 HASP RIVET (7)
X66-LID	#66 ENCLOSURE LID COMPLETE	66S23 LID (1), 66S38 PADLOCK EYE (1), 66S21 HINGE (.5), 66S18 HINGE RIVET (3), 66S63 SHELF RIVET (3), 66S90 HASP RIVET (4)
X66-PETCOCK	STAINLESS STEEL PETCOCK ASSEMBLY	66S01 BODY (1), 66S08 NUT O-RING (1), 66S02 NUT (1), 66S03 PLUNGER (1), 66S10 PLUNGER O-RING (1), 66S04 ROD PIN (1), 66S05 NOZZLE (1), 66S22 CAP (1)
X66-PLUNGER	#66 PLUNGER ASSEMBLY	66S26 PLUNGER (1), 66S27-TF SEAT RUBBER (1), 66S28-20 PLUNGER SCREW (1), 66S30 SPRING PIN (1)
X66RK	66 REPAIR KIT	66S27-TF SEAT RUBBER (1), 66S28-20 SCREW (1)

OPTIONAL REPAIR KITS

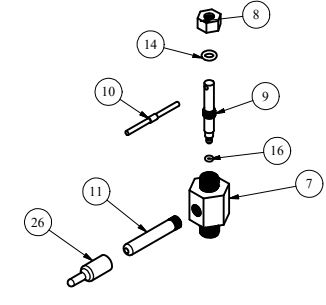
X66-HOUSING-BF	ENCLOSURE w/ BOLTED FLANGE COMPLETE (NOTE R)	66S23 LID (1), 66S37 HASP (1), 66S24 DOOR (1), 66S38 PADLOCK EYE (1), 66S21 HINGE (0.94 FEET), 66S18 SHORT RIVET (9), 4 ALUM ANGLE (0.2 FEET), 66S19 LONG RIVET (4), 66S17 TRIM (3 FEET), 6ALSQ ENCLOSURE (4 FEET), 1 1/2AA BOLTED FEET (2 FEET), 1ALB1 SPACER (THIN) (0.42 FEET), 1ALB2 SPACER (THICK) (0.42 FEET), 66S63 SHELF RIVET (3), 66S90 HASP RIVET (7)
----------------	--	--



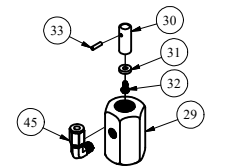
HEADSTOCK ASSEMBLY



PETCOCK ASSEMBLY



INLET ASSEMBLY



DRAWN	SMS	10/6/2017
CHECKED	DCL	11/27/2017
MODIFIED	ADC	5/9/2023

SIZE	C
SCALE	1 / 5



2511 NORTH 9TH ST.
ST. LOUIS, MO 63102
1-800-231-3990

DWG NAME/PART NUMBER	#66	SHEET	1 OF 1	REV	2.1
FILE PATH	G:\ENGINEERING\Mechanical\66\66 Cut_Rev2.dwg				

NOTE	DESCRIPTION
A	NOT SHOWN
B	PIPE LENGTH DEPENDENT ON DEPTH OF BURY
C	SOLD AS REPLACEMENT PART
P	SEE PETCOCK ASSEMBLY FOR PARTS INFORMATION
Q	REPLACEMENT NOZZLE REQUIRES BENDING IN THE FIELD AFTER INSTALLATION
R	POWDER COATING OPTIONS AVAILABLE

DISCLAIMER
THIS DRAWING IS THE PROPERTY OF THE KUPFERLE
FOUNDARY COMPANY. IT IS NOT TO BE USED OR
DUPLICATED WITHOUT THE PERMISSION OF THE OWNER.