

#7600 CUT SHEET

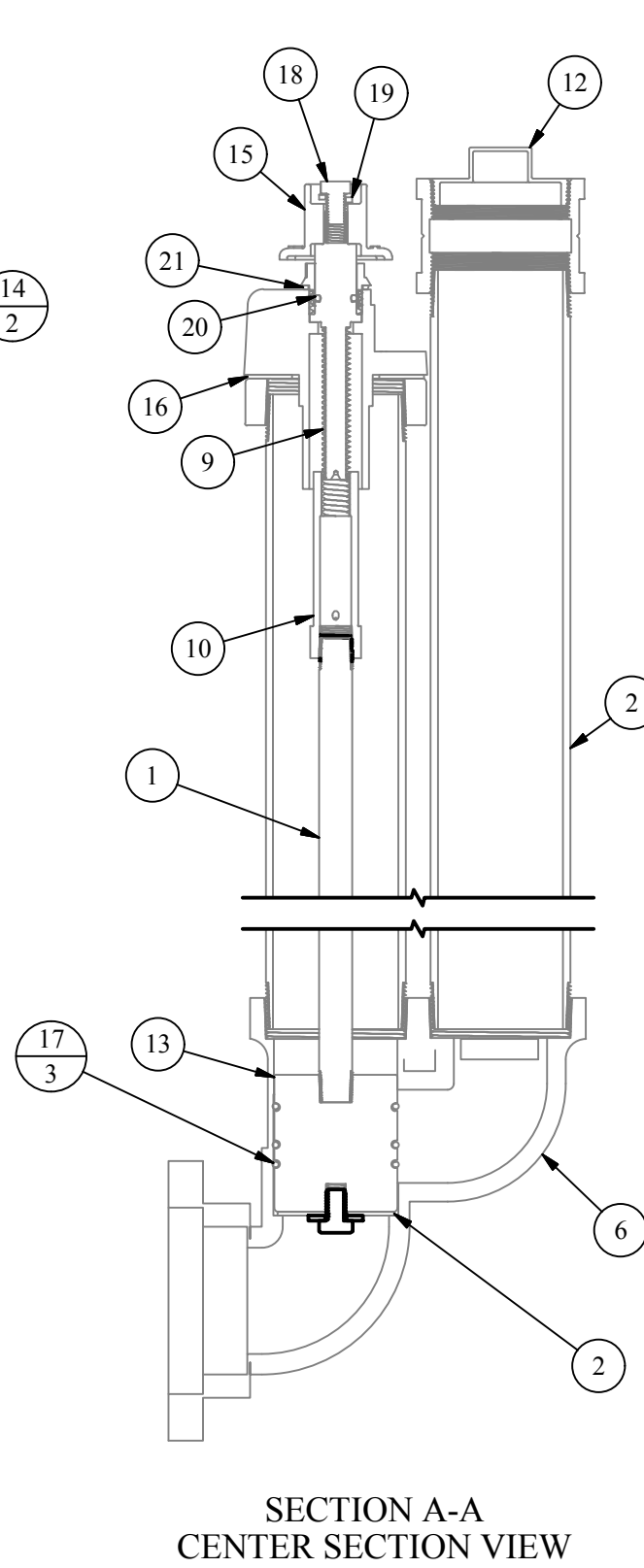
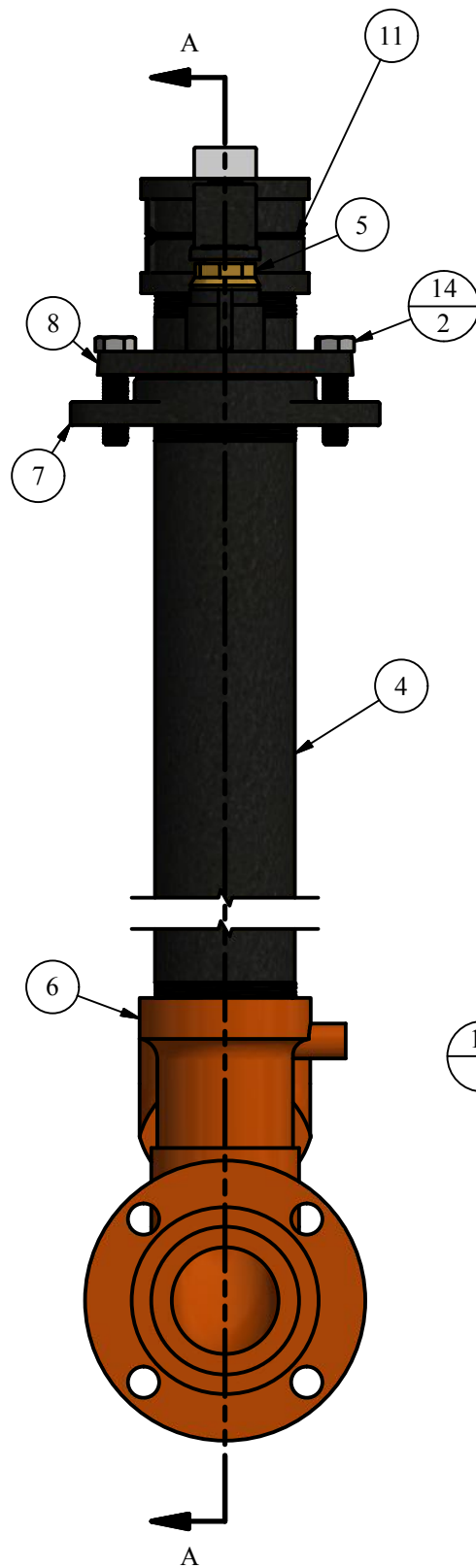
(4" MJ INLET, 4" FIP OUTLET)

PARTS LIST

ITEM	QTY	PART NUMBER	DESCRIPTION	NOTES
1	1.71	1 1/16SR	1-1/16" SOLID ROUND ROD	B,C
2	1	10800	SEAT WASHER	C
3	1	10812	S.S. PLUNGER WASHER	
4	4.67	4P	4" BLACK PIPE	B,C
5	1	621	PACKING NUT 1-1/4" PENT	
6	1	7601	4" INLET CASTING	C
7	1	7602	IRON NECK	C
8	1	7603	IRON TOP CAP	
9	1	7604	BRASS TOP SCREW	
10	1	7605	BRASS CONNECTING NUT	C
11	1	7606	4" TRAFFIC BREAKAWAY COUPLING	C
12	1	7608	4" SCH. 40 PVC THREADED PLUG	
13	1	7609	PLUNGER	
14	2	7610	BOLT FOR TOP CAP	C
15	1	7612	2" GATE VALVE NUT	C
16	1	7613	TOP CAP GASKET	C
17	3	7614	PLUNGER O-RING FOR 7500/7600	C
18	2	7615	BOLT FOR GATE VALVE NUT	C
19	1	7622	LOCK WASHER FOR GATE VALVE SCREW	C
20	1	77M	O-RING FOR SLOTTED SCREW	C
21	1	77MG	GASKET FOR PACKING NUT	C

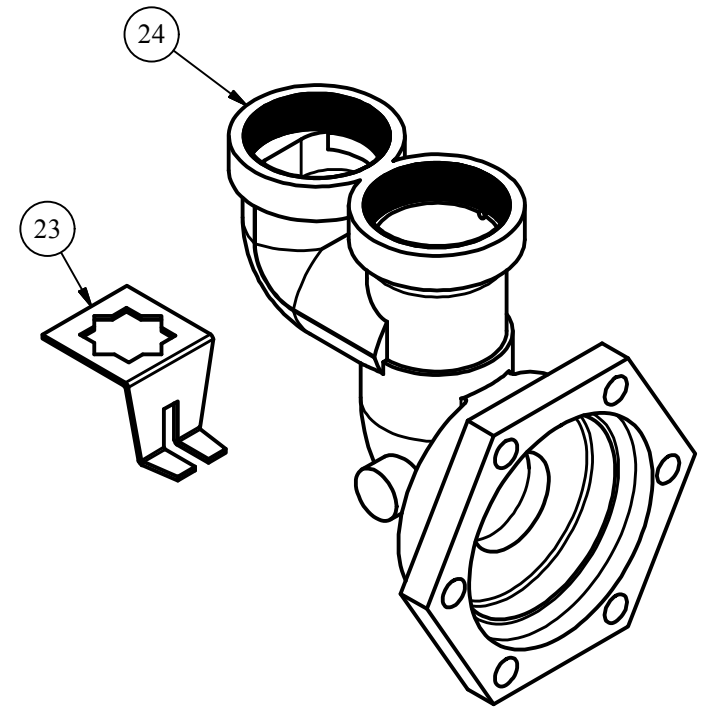
OPTIONS / REPAIR PARTS LIST

22	0	7600SL	7500/7600 12" SEWER LID	A,C
23	0	7616	LOCKING WRENCH FOR 7500/7600	C
24	0	7617	IRON 6" MJ INLET	C

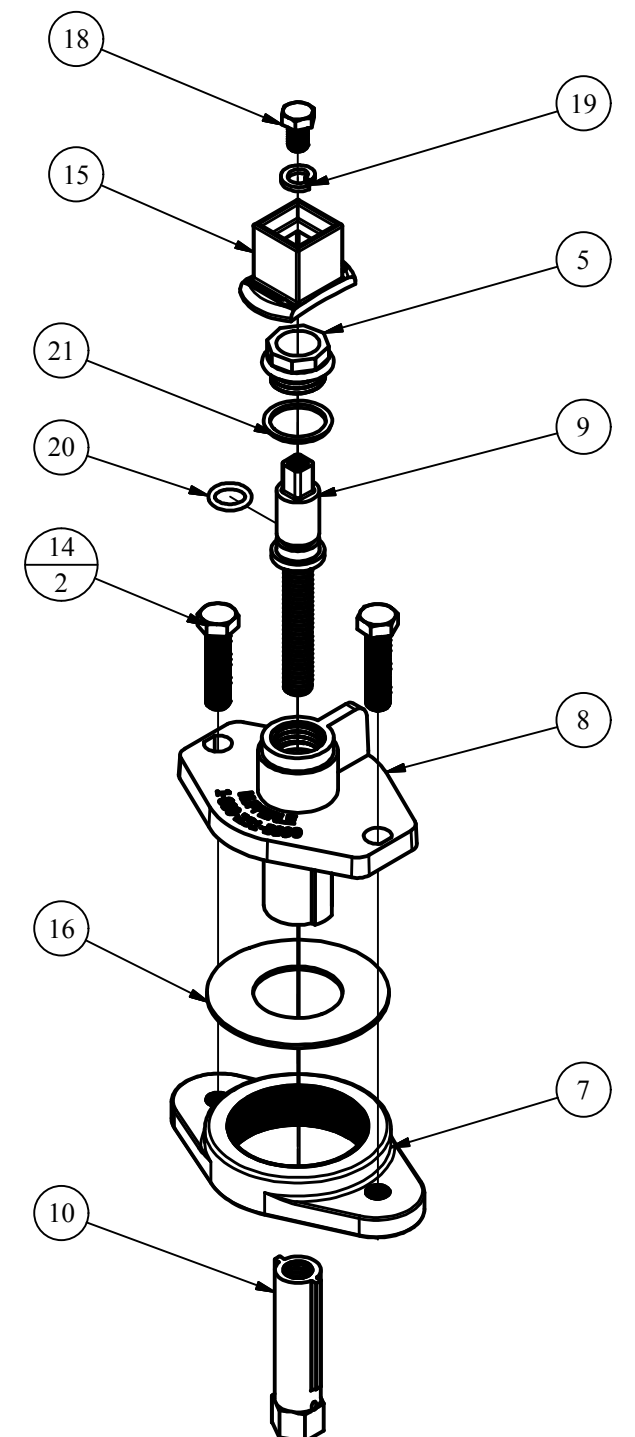


SECTION A-A
CENTER SECTION VIEW

OPTIONAL PARTS



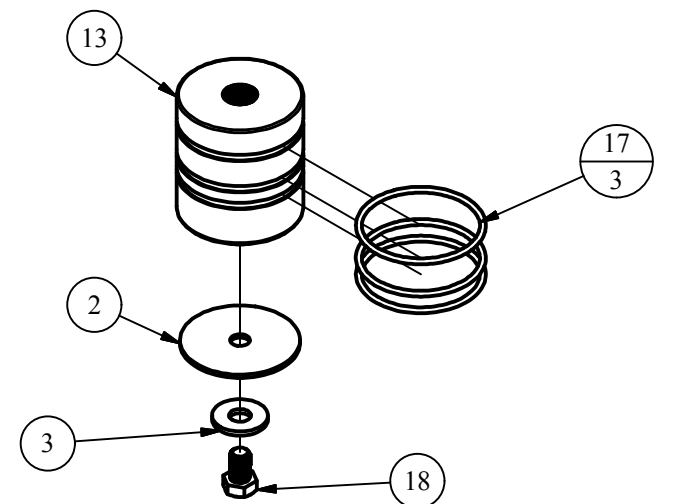
TOP ASSEMBLY



REPAIR KITS

PART NUMBER	DESCRIPTION	PARTS INCLUDED
X621	BRASS PACKING NUT COMPLETE	621 PACKING NUT (1), 77MG GASKET (1)
X7500R	RISER FOR #7500	7608 PLUG (1), 7607 ELBOW (1), 4P PIPE (1)
X7600RK	7500/7600 REPAIR KIT	7614 O-RING (3), 10800 SEAT WASHER (1)
X7603	IRON TOP CAP COMPLETE	7603 TOP CAP (1), 7613 GASKET (1), 7610 BOLT (2)
X7604	COMPLETE TOP SCREW FOR 7500/7600	7604 SCREW (1), 77M O-RING (1)
X7609	COMPLETE PLUNGER FOR 7500/7600	7609 PLUNGER (1), 7614 O-RING (3), 10800 SEAT WASHER (1), 10812 WASHER (1), 7615 BOLT (1)

PLUNGER ASSEMBLY



LEGEND

- (X) → STANDARD TAG
- (X/Y) → TAG WITH Y QUANTITY

NOTE	DESCRIPTION
A	NOT SHOWN
B	PIPE LENGTH DEPENDENT ON DEPTH OF BURY
C	SOLD AS REPLACEMENT PART

DISCLAIMER
THIS DRAWING IS THE PROPERTY OF THE KUPFERLE
FOUNDRY COMPANY. IT IS NOT TO BE USED OR
DUPLICATED WITHOUT THE PERMISSION OF THE OWNER.

DRAWN
SMS 2/28/2017
CHECKED
DCL 3/1/2017
MODIFIED
MAM 1/30/2019

SIZE C SCALE 1/6

DWG NO #7600 Cut_Rev0.1



2511 NORTH 9TH ST.
ST. LOUIS, MO 63102
1-800-231-3990

SHEET 1 OF 1
REV 0