

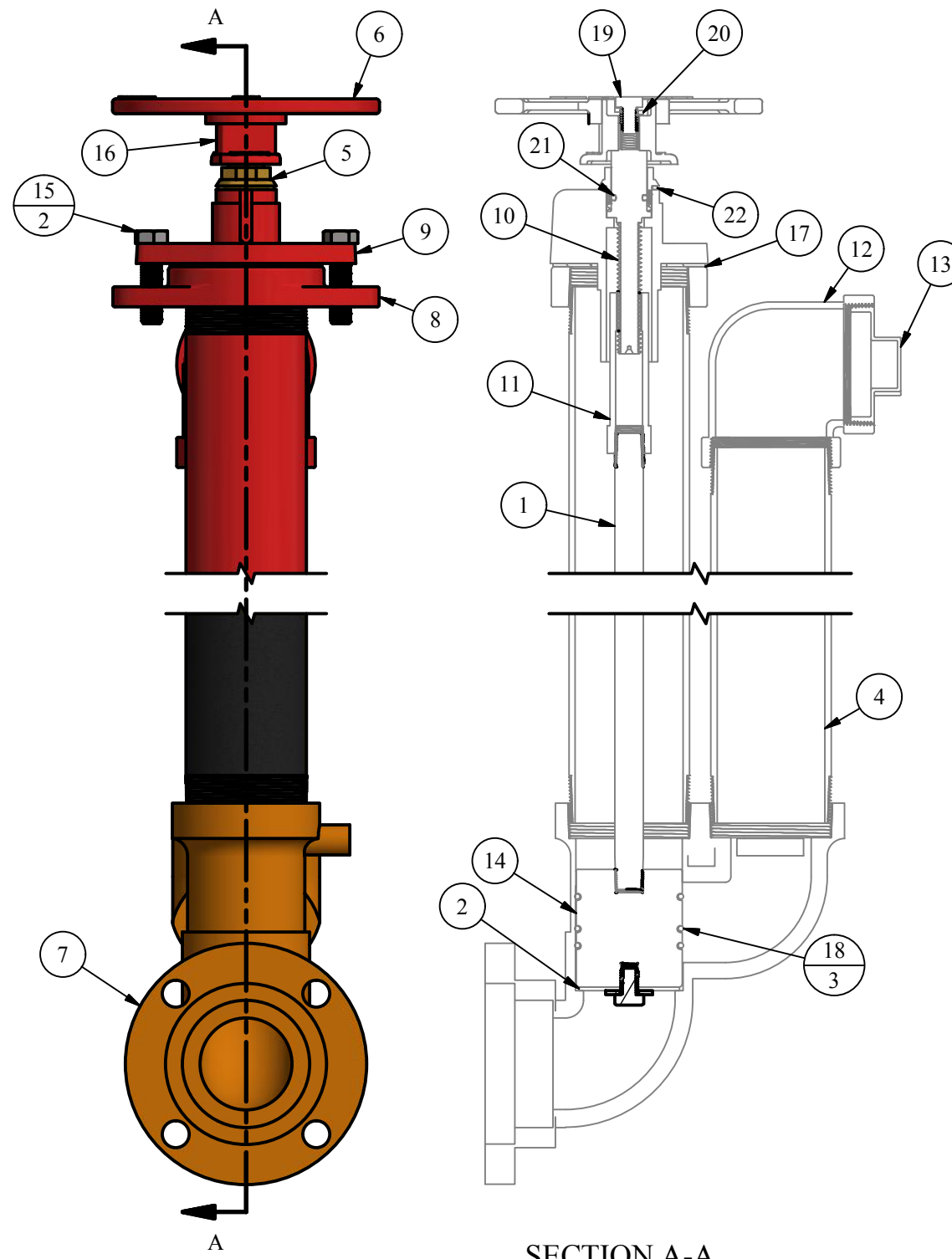
#8000WD CUT SHEET

PARTS LIST

ITEM	QTY	PART NUMBER	DESCRIPTION	NOTES
1	5.2	1 1/16SR	1-1/16" SOLID STEEL ROD	B,C
2	1	10800	SEAT WASHER	C
3	1	10812	S.S. PLUNGER WASHER	
4	10.55	4P	4" STEEL PIPE	B,C
5	1	621	PACKING NUT (1-1/4" PENT)	
6	1	670	2" SQUARE NUT HAND WHEEL	C
7	1	7601	4" MJ IRON INLET	C
8	1	7602	IRON NECK	C
9	1	7603	IRON TOP CAP	
10	1	7604	BRASS TOP SCREW	
11	1	7605	BRASS CONNECTION NUT	C
12	1	7607	4" IRON 90° ELBOW	
13	1	7608	4" SCH. 40 PVC THREADED PLUG	C
14	1	7609	PLUNGER FOR 7500/7600	
15	2	7610	BOLT FOR TOP CAP	C
16	1	7612	2" GATE VALVE NUT	C
17	1	7613	TOP CAP GASKET	C
18	3	7614	340 - 70 PLUNGER O-RING FOR 7500/7600	C
19	2	7615	BOLT FOR GATE VALVE NUT	C
20	1	7622	LOCKWASHER FOR GATE VALVE SCREW	C
21	1	77M	O-RING FOR SLOTTED SCREW	
22	1	77MG	GASKET FOR PACKING NUT	

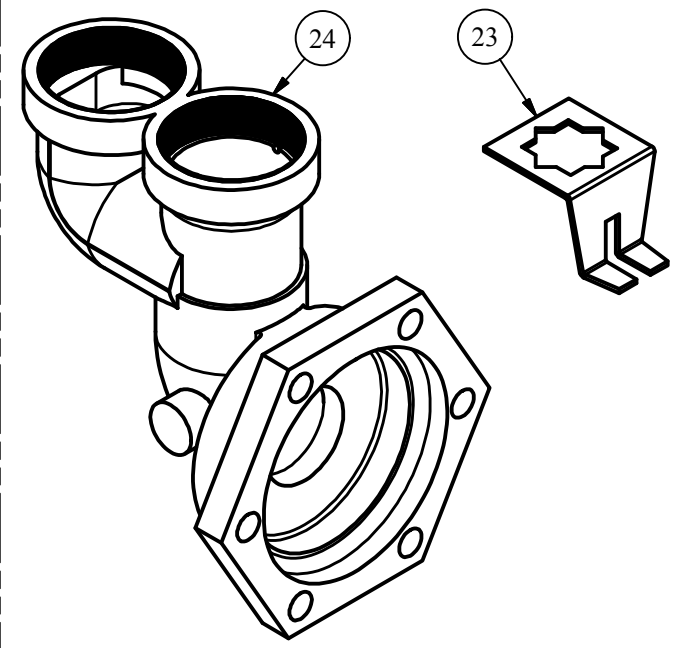
OPTIONAL PARTS LIST

23	0	7616	LOCKING WRENCH	C
24	0	7617	IRON 6" MJ INLET	C

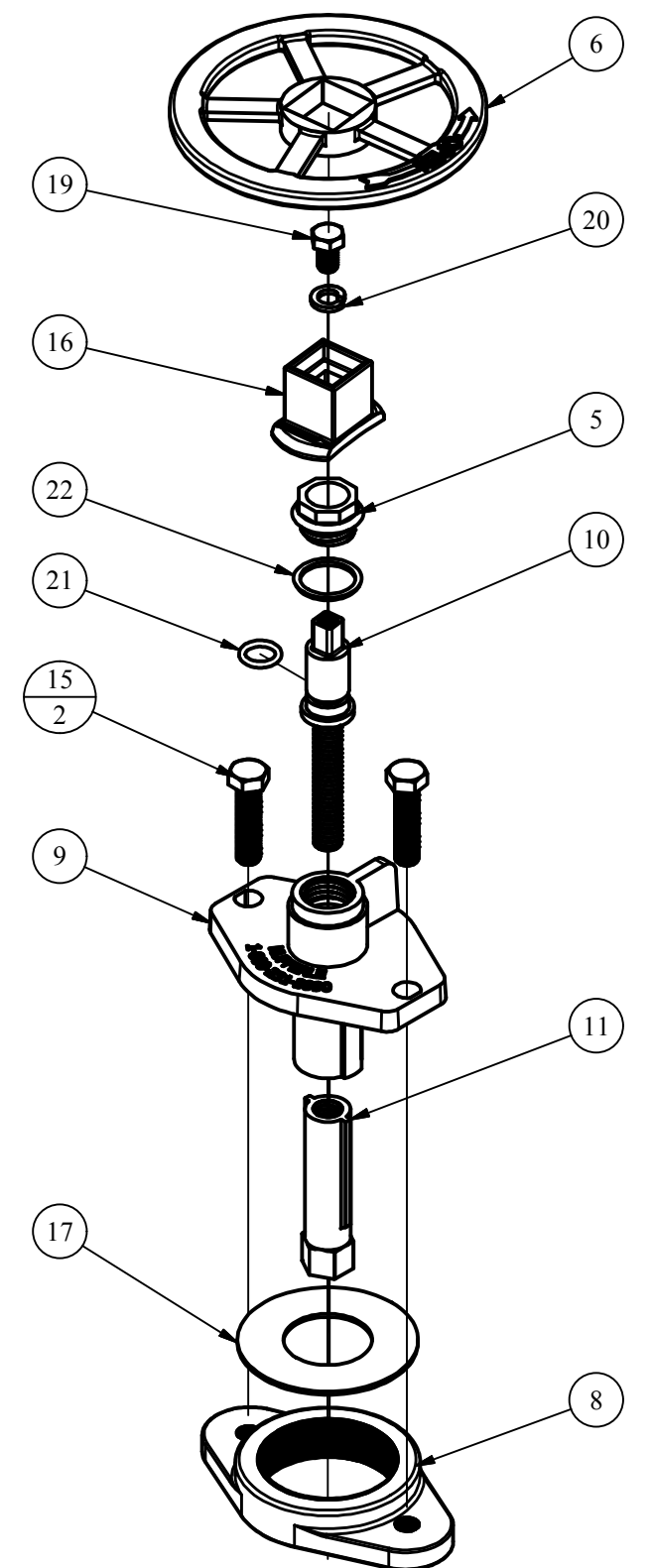


SECTION A-A
CENTER SECTION VIEW

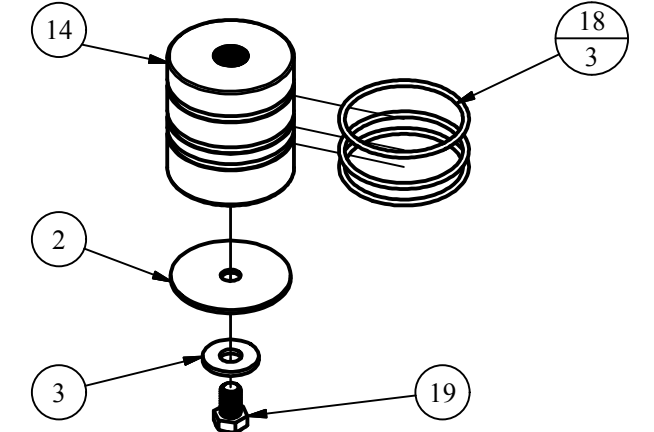
OPTIONAL PARTS



TOP CAP ASSEMBLY



PLUNGER ASSEMBLY



REPAIR KITS

PART NUMBER	DESCRIPTION	PARTS INCLUDED
X621	BRASS PACKING NUT COMPLETE	621 PACKING NUT (1), 77MG GASKET (1)
X7600RK	7500/7600 REPAIR KIT	7614 O-RING (3), 10800 SEAT WASHER (1)
X7603	IRON TOP CAP COMPLETE	7603 TOP CAP (1), 7613 GASKET (1), 7610 BOLT (2)
X7604	TOP SCREW COMPLETE	7604 SCREW (1), 77M O-RING (1)
X7609	PLUNGER COMPLETE FOR 7500/7600	7609 PLUNGER (1), 7614 O-RING (3), 10800 SEAT WASHER (1), 10812 WASHER (1), 7615 BOLT (1)

NOTE	DESCRIPTION
A	NOT SHOWN
B	PIPE LENGTH DEPENDENT ON DEPTH OF BURY
C	SOLD AS REPLACEMENT PART

DISCLAIMER:
THIS DRAWING IS THE PROPERTY OF THE KUPFERLE
FOUNDRY COMPANY. IT IS NOT TO BE USED OR
DUPLICATED WITHOUT THE PERMISSION OF THE OWNER.

LEGEND

(X) →	STANDARD TAG
(X/Y) →	TAG WITH Y QUANTITY

DRAWN
SMS
CHECKED

4/16/2018

MODIFIED
MAM

1/30/2019

SIZE

SCALE

C

1 / 6

DWG NO

#8000WD Cut_Rev0



2511 NORTH 9TH ST.
ST. LOUIS, MO 63102
1-800-231-3990

SHEET

1 OF 1

REV

0