

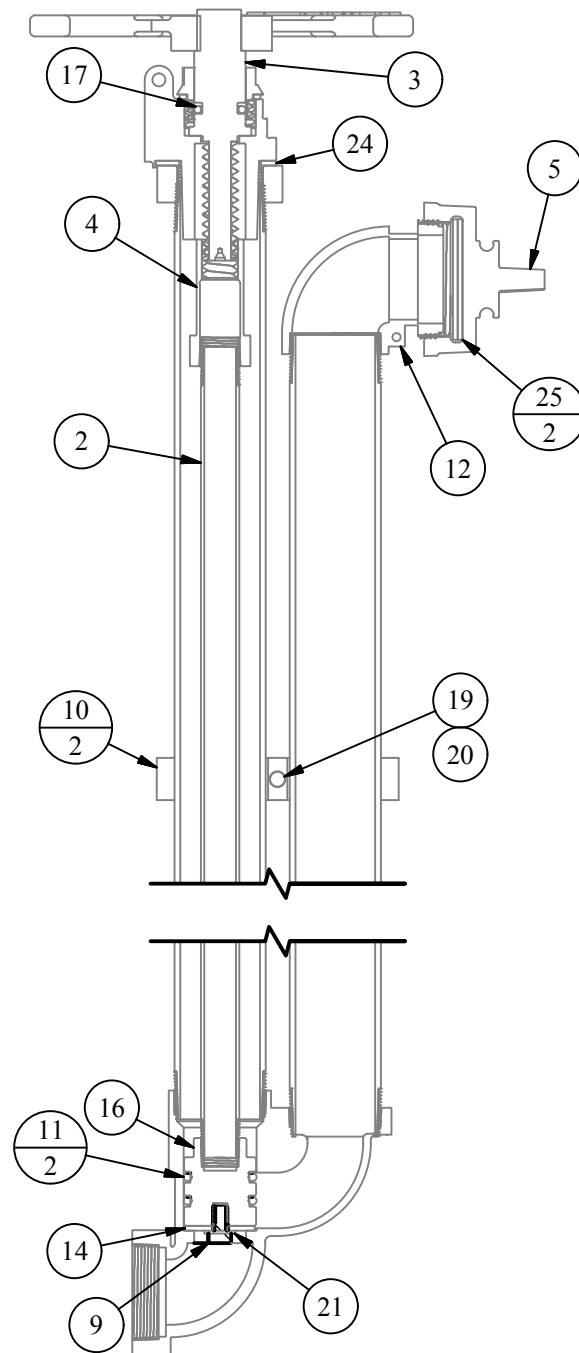
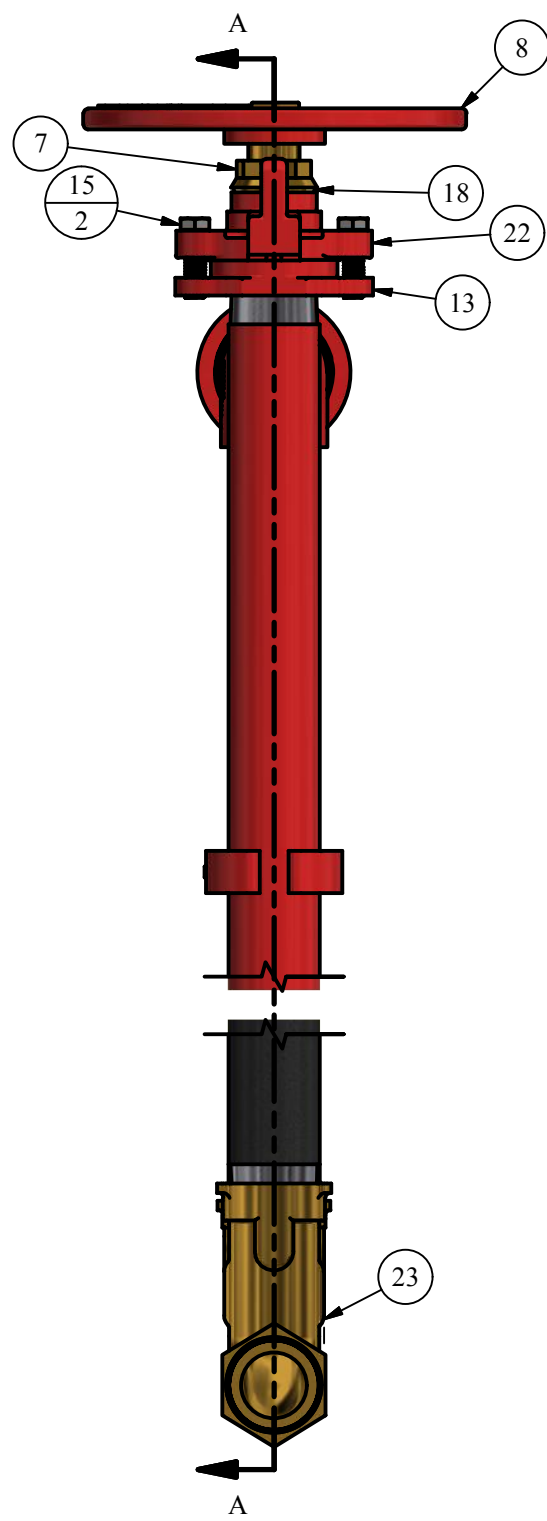
# #80WD CUT SHEET

## PARTS LIST

ITEM	QTY	PART NUMBER	DESCRIPTION	NOTES
1	6.00	2P	2" STEEL PIPE	B,C
2	3.00	3/4GAL	3/4" GALVANIZED PIPE	B,C
3	1	501-80	OPERATING SCREW (1-1/4" PENT)	
4	1	510	CONNECTING NUT	C
5	1	592-C	2-1/2" NST SIDE CAP	
6	1	595	PEAR RING, CHAIN, S-HOOK ASSEMBLY	A
7	1	621	PACKING NUT (1-1/4" PENT)	
8	1	666	1-1/4" PENT HAND WHEEL	C
9	1	77C	SEAT WASHER BOLT	
10	2	77CL	IRON CLAMP	C
11	2	77D	PLUNGER O-RING	C
12	1	77E	BRASS NOZZLE (2-1/2" NST)	C
13	1	77F	IRON NECK	C
14	1	77I	SEAT WASHER	C
15	2	77K	TOP CAP BOLT	C
16	1	77L	PVC PLUNGER	
17	1	77M	317 N 70 O-RING FOR SLOTTED SCREW	C
18	1	77MG	PACKING NUT GASKET	C
19	1	77P	BOLT FOR CLAMP	C
20	1	77Q	NUT FOR CLAMP	C
21	1	77W	WASHER FOR PLUNGER	
22	1	77WD	IRON TOP CAP (WASHDOWN)	
23	1	79V	2" BRASS SIDE INLET VALVE	C
24	1	A1	TOP CAP GASKET	C
25	2	A16	NOZZLE CAP GASKET (2-1/2")	C

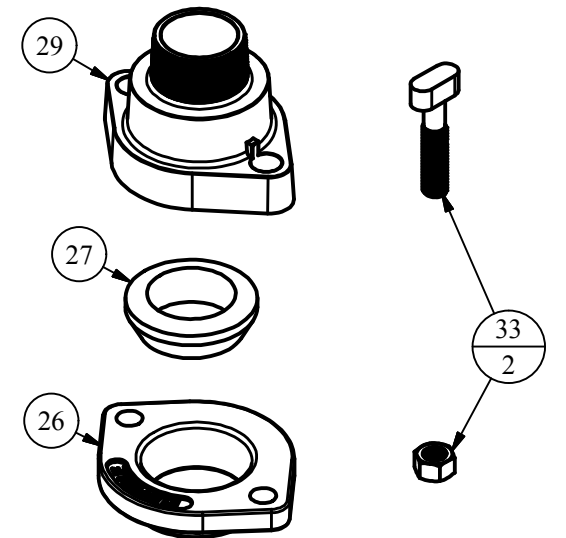
## OPTIONAL / REPAIR PARTS LIST

ITEM	QTY	PART NUMBER	DESCRIPTION	NOTES
26	0	2MJG	2" MECHANICAL JOINT GLAND	
27	0	2TG	2" TRANSITION GASKET	
28	0	3/4C	3/4" COUPLING	
29	0	707	2" MJ BRASS ADAPTER	
30	0	707-IRON	2" MJ IRON ADAPTER	
31	0	77J	2" BRASS VERTICAL INLET VALVE	C
32	0	79W-IRON	IRON VALVE 2" MJ 90° SIDE INLET	C
33	0	CORTEN	MJ BOLT AND NUT	

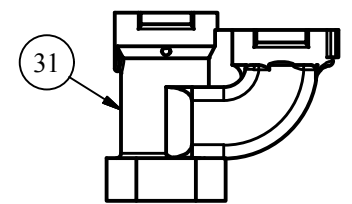


SECTION A-A  
CENTER SECTION VIEW

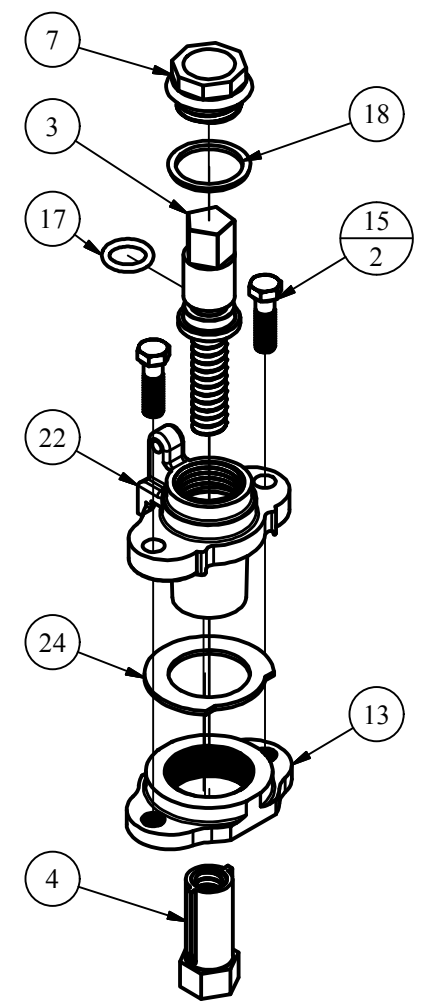
## X707 ASSEMBLY



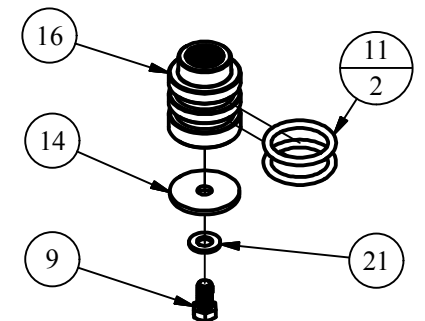
## OPTIONAL VERTICAL INLET VALVE



## TOP CAP ASSEMBLY



## PLUNGER ASSEMBLY



## REPAIR KITS

PART NUMBER	DESCRIPTION	PARTS INCLUDED
X501-80	TOP SCREW FOR #80WD COMPLETE	501-80 SCREW (1), 77M O-RING (1)
X592C	NOZZLE CAP COMPLETE 2-1/2" NST	592-C SIDE CAP (1), A16 GASKET (2), 595 CHAIN ASSEMBLY (1)
X621	BRASS PACKING NUT COMPLETE	621 PACKING NUT (1), 77MG GASKET (1)
X77L	PLUNGER COMPLETE	77L PLUNGER (1), 77D O-RING (2), 77I SEAT WASHER (1), 77W WASHER (1), 77C BOLT (1)
X77RK	REPAIR KIT	77D O-RING (2), 77I SEAT WASHER (1), 77W WASHER (1)
X77WD	IRON TOP CAP COMPLETE	77WD TOP CAP (1), A1 GASKET (1), 77K BOLT (2)
X80WDOPASSY	80WD OPERATING ASSEMBLY	501-80 SCREW (1), 77M O-RING (1), 510 CONNECTING NUT (1), 621 PACKING NUT (1), 77MG GASKET (1), 77GA TOP CAP (1), A1 GASKET (1), 77K BOLT (2) (ORDER 666 HANDWHEEL, IF NEEDED, SOLD SEPARATELY)

## OPTIONAL REPAIR KITS

X707	2" MJ BRASS ADAPTER	707 2" BRASS MJ ADAPTER (1), 2MJG GLAND (1), 2TG 2" TRANSITION GASKET (1), CORTEN MJ BOLT AND NUT (2)
X707-IRON	2" MJ IRON ADAPTER	707-IRON 2" IRON MJ ADAPTER (1), 2MJG GLAND (1), 2TG 2" TRANSITION GASKET (1), CORTEN MJ BOLT AND NUT (2)

## CONVERSION KITS

Z80WD-CONV	CONVERSION 80WD FROM 77	2P PIPE (1.71), 3/4GAL ROD (1.71), 3/4C COUPLING (1), 77F NECK (2), 501-80 SCREW (1), 510 CONNECTING NUT (1), 621 PACKING NUT (1), 77MG GASKET (1), 77GA TOP CAP (1), A1 GASKET (2), 77K BOLT (2), 666 HANDWHEEL (1)
------------	-------------------------	--

NOTE	DESCRIPTION
A	NOT SHOWN
B	PIPE LENGTH DEPENDENT ON DEPTH OF BURY
C	SOLD AS REPLACEMENT PART

**DISCLAIMER:**  
THIS DRAWING IS THE PROPERTY OF THE KUPFERLE  
FOUNDRY COMPANY. IT IS NOT TO BE USED OR  
DISTRIBUTED WITHOUT THE PERMISSION OF THE OWNER.

## LEGEND

(X)	STANDARD TAG
(X/Y)	TAG WITH Y QUANTITY

DRAWN	4/13/2018
SMS	CHECKED
DCL	10/23/2018
MODIFIED	

SIZE	SCALE
C	1 / 5

DWG NO	#80WD Cut_Rev0
--------	----------------



SHEET	REV
1 OF 1	0