

#85 CUT SHEET

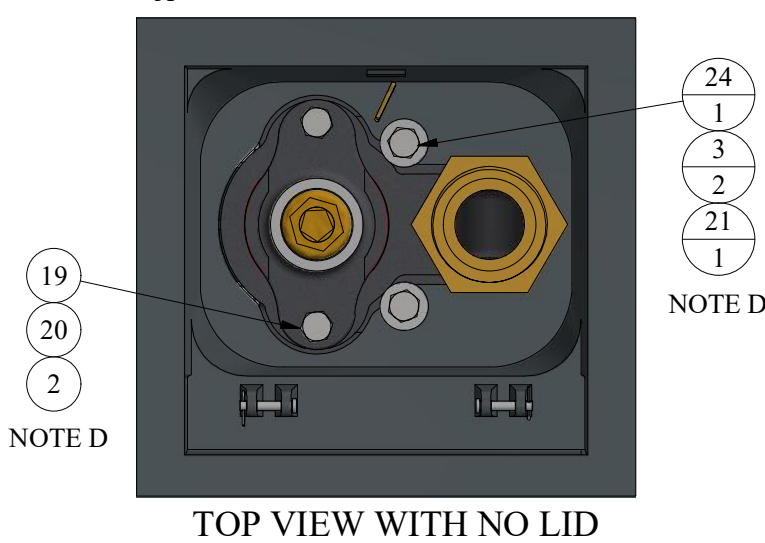
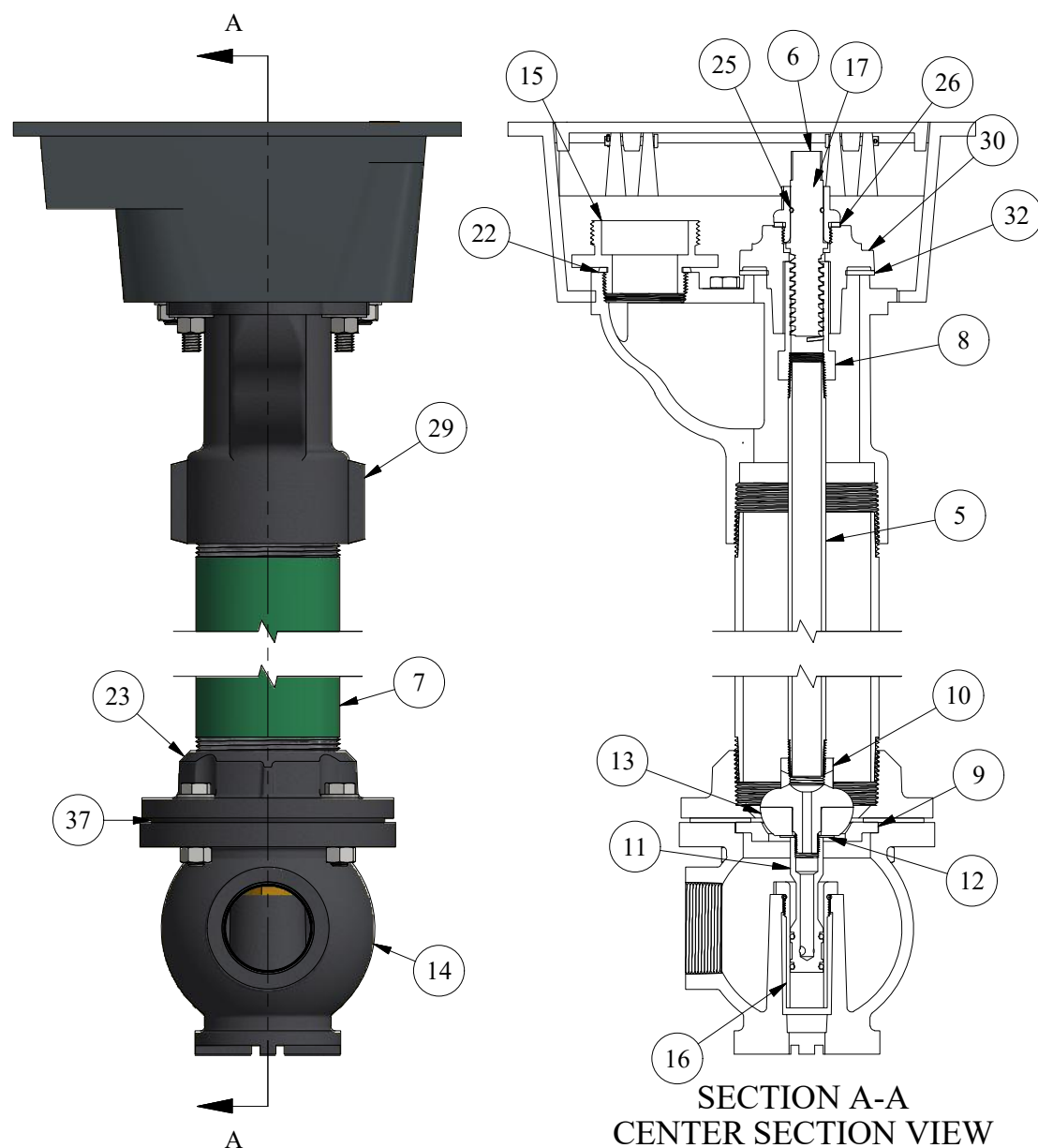
(2" FIP INLET & 2-1/2" NST OUTLET SHOWN)
NOTE J

PARTS LIST

ITEM	QTY	PART NUMBER	DESCRIPTION	NOTES
1	4	1/2W	STEEL WASHER FOR BOTTOM	C
2	2	1/2W-C	STEEL CLIPPED WASHER	C
3	4	1/2WSS	S.S. WASHER FOR TOP	C
4	2	2OR	O-RING FROM PLUNGER STEM	C
5	24.000 in	3/4GAL	3/4" GALVANIZED PIPE	B,C
6	1	4	LOW LEAD BRASS SCREW	C
7	20.000 in	4FBE	3-1/2" FBE COATED STEEL PIPE	B,C,M
8	1	510	CONNECTING NUT	C
9	1	521	SEAT RING	C
10	1	537-P	"NEW STYLE" PLUNGER TOP	
11	1	539L2	"NEW STYLE" PLUNGER STEM	
12	1	539W	S.S. WASHER FOR PLUNGER STEM	
13	1	541	SEAT RUBBER	C
14	1	571-A	IRON BOTTOM 2" IP	C,J
15	1	601A	NOZZLE 2-1/2" NST	C,J
16	1	611	WASTE TUBE	
17	1	620	PACKING NUT	
18	4	628A-B	HEX BOLT FOR BOTTOM	C
19	2	629A-B	HEX BOLT FOR TOP CAP	C
20	6	629A-N	HEX NUT FOR BOTTOM	C
21	2	629A-N-SS	HEX NUT FOR BOX	C
22	1	669	PACKING NUT GASKET	C,J
23	1	678	FLANGE COUPLING FOR DUCTILE	C
24	2	77K	HEX BOLT FOR NEW STYLE 85 BOX	C
25	1	77N	O-RING FOR TOP SCREW	C
26	1	77O	PACKING NUT GASKET	C
27	1	851	LID FOR 85 BOX	C
28	1	852	BOX FOR 85 WITH INTERIOR HINGE	
29	1	853B-N	"NEW STYLE" YOKE	C
30	1	854	TOP CAP	
31	2	856	CLEVIS PIN FOR 85 BOX	
32	1	857	TOP CAP GASKET	C
33	2	859	COTTER PIN FOR 85 BOX	
34	1	85WL-GEAR	WORM LOCK GEAR	
35	1	85WL-INSERT	WORM LOCK	
36	1	A19	O-RING FOR WASTE TUBE	C
37	1	A8	"NEW STYLE" BOTTOM GASKET	C
38	1		COTTER PIN	BRASS COTTER PIN

OPTIONS / REPAIR PARTS LIST

38	0	592-D	NOZZLE CAP	A,C,J
39	0	85LHW	LONG HANDLE WRENCH	A,C
40	0	85SHW	SHORT HANDLE WRENCH	A,C
41	0	A16	NOZZLE CAP GASKET	A,C,J



TOP VIEW WITH NO LID

REPAIR KITS

PART NUMBER	DESCRIPTION	PARTS INCLUDED	NOTES
X4	BRASS TOP SCREW COMPLETE	4 SCREW (1), 77N O-RING (1)	
X531-NS	PLUNGER COMPLETE "NEW STYLE" (w/ O-RINGS)	NOTE K	
X539L2	"NEW STYLE" PLUNGER STEM COMPLETE	NOTE K	
X566-NS	WASHER SET "NEW STYLE"	541 SEAT RUBBER (1), 2OR O-RING (3), 539W WASHER (1)	
X571A	IRON BOTTOM 2" IP COMPLETE	NOTE J	
X592D	2-1/2" NOZZLE CAP COMPLETE	NOTE J	
X601A	BRASS NOZZLE 2-1/2" NST	NOTE J	
X611	WASTE TUBE WITH O-RING	611 WASTE TUBE (1), A19 O-RING (1)	
X620	BRASS PACKING NUT WITH GASKET	620 PACKING NUT (1), 77O GASKET (1)	
X628B-B	TOP CAP BOLT AND NUT	629A-B BOLT (1), 629A-N NUT (1), 1/2W-C WASHER	REQUIRES 2 SETS PER CAP
X629A	BOTTOM BOLT, NUT, AND WASHER	628A-B BOLT (1), 629A-N NUT (1), 1/2W WASHER (1)	REQUIRES 4 SETS PER BOTTOM
X852	"NEW STYLE" BOX COMPLETE	851 LID (1), 852 BOX (1), 85WL GEAR (1), 85WL-INSERT (1), COTTER PIN (1), 856 CLEVIS PIN (2), 859 COTTER PIN FOR CLEVIS (2)	POST JUNE 2024
X854	TOP CAP COMPLETE	854 TOP CAP (1), 857 GASKET (1), 629A-B BOLT (2), 629A-N NUT (2), 1/2W-C WASHER	
X85WL	BRASS WORM LOCK ASSEMBLY	85WL GEAR (1), 85WL-INSERT (1), COTTER PIN (1)	

OLD STYLE REPAIR KITS

X531	PLUNGER COMPLETE "OLD STYLE" (WITH LEATHERS)	NOTE K	
X566	WASHER SET ("OLD STYLE" WITH LEATHERS)	NOTE K	

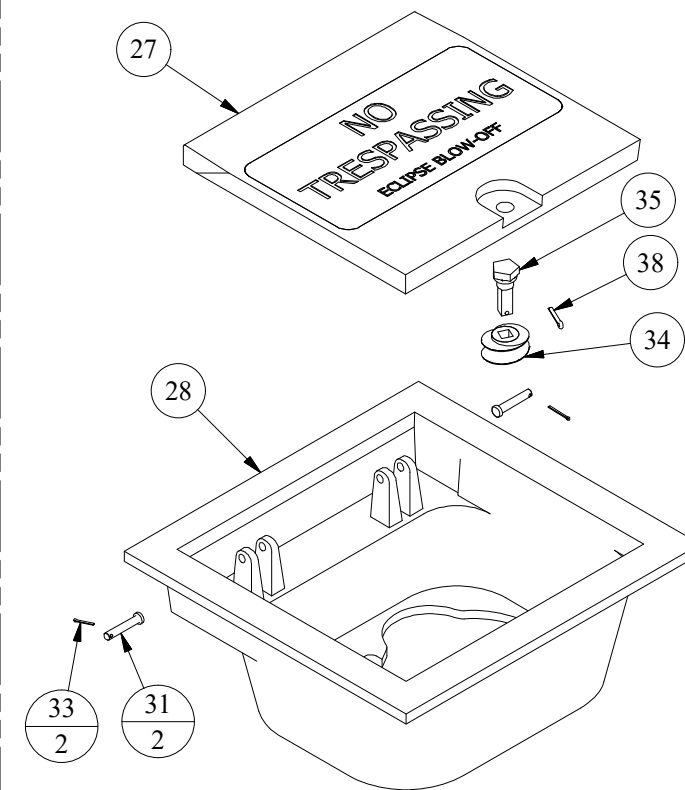
NOTE	DESCRIPTION
A	NOT SHOWN
B	PIPE LENGTH DEPENDENT ON DEPTH OF BURY, SHOWN AS 3' DOB
C	SOLD AS REPLACEMENT PART
D	BOLT ASSEMBLY USED ON ALL SIMILAR HOLES/BRACKETS
J	SEVERAL OTHER INLET/OUTLET CONFIGURATIONS ARE OFFERED. SEE NOTES K & L
K	SEE #2, #8, #85 GUIDE FOR INLET, NOZZLE, CAP OPTIONS, & PLUNGER HISTORY SHEET FOR ASSEMBLY VIEWS AND REPLACEMENT PART INFORMATION
M	BARREL PIPE FUSION BONDED EPOXY COATED, BOTH INTERNALLY AND EXTERNALLY

DISCLAIMER:
THIS DRAWING IS THE PROPERTY OF THE KUPFERLE FOUNDRY COMPANY. IT IS NOT TO BE USED OR DUPLICATED WITHOUT THE PERMISSION OF THE OWNER.

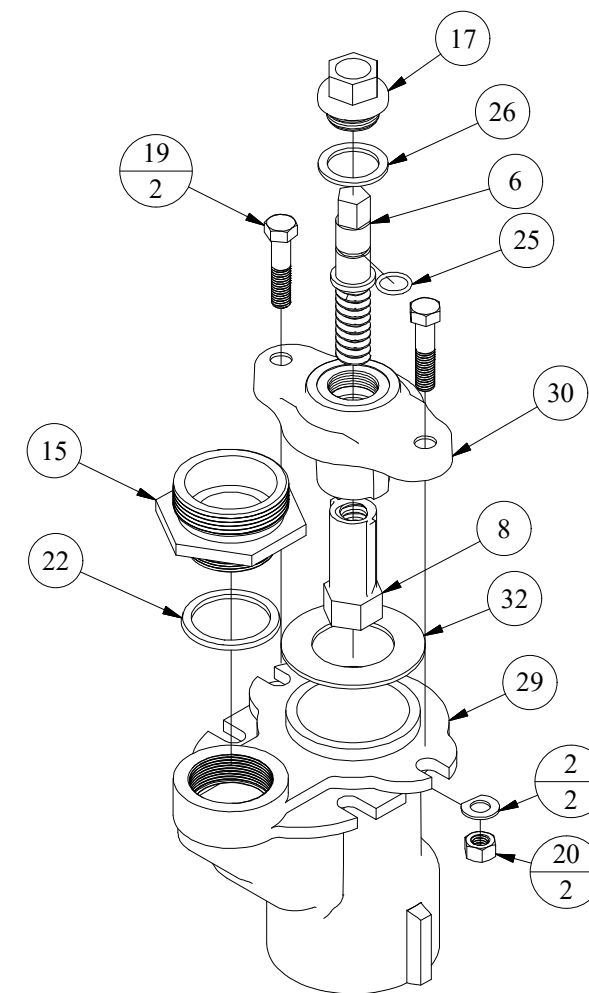
LEGEND

(X)	STANDARD TAG
(X/Y)	TAG WITH Y QUANTITY

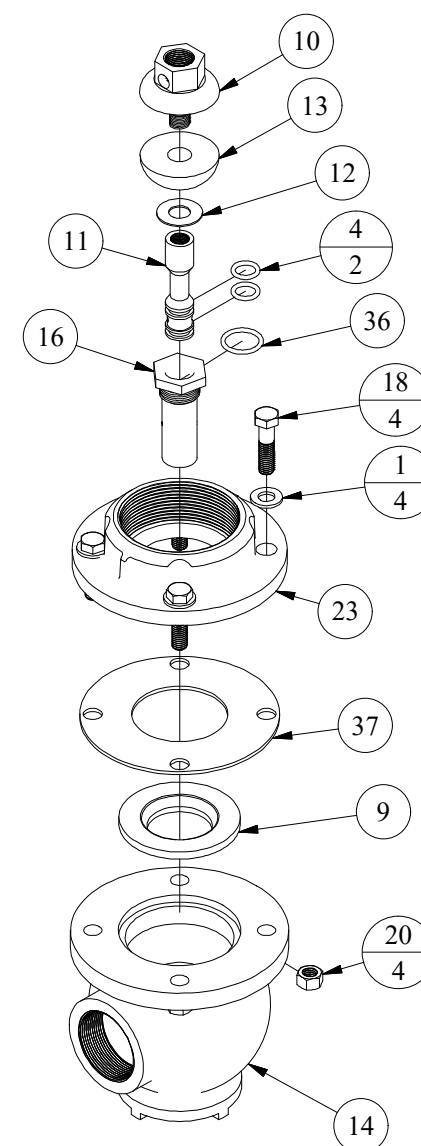
BOX ASSEMBLY



TOP CAP ASSEMBLY



BOTTOM ASSEMBLY



DRAWN	9/18/2017
SMS CHECKED	
DCL MODIFIED	10/30/2017
KJW	6/3/2024
SIZE	SCALE
C	1 / 5
DWG NO	#85



2511 NORTH 9TH ST.
ST. LOUIS, MO 63102
1-800-231-3990

SHEET	REV
1 OF 1	2