

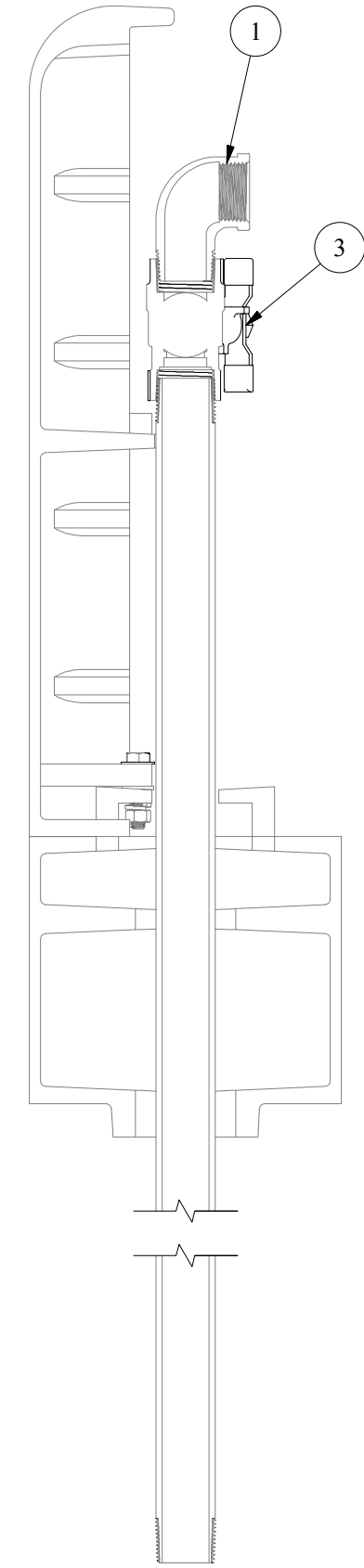
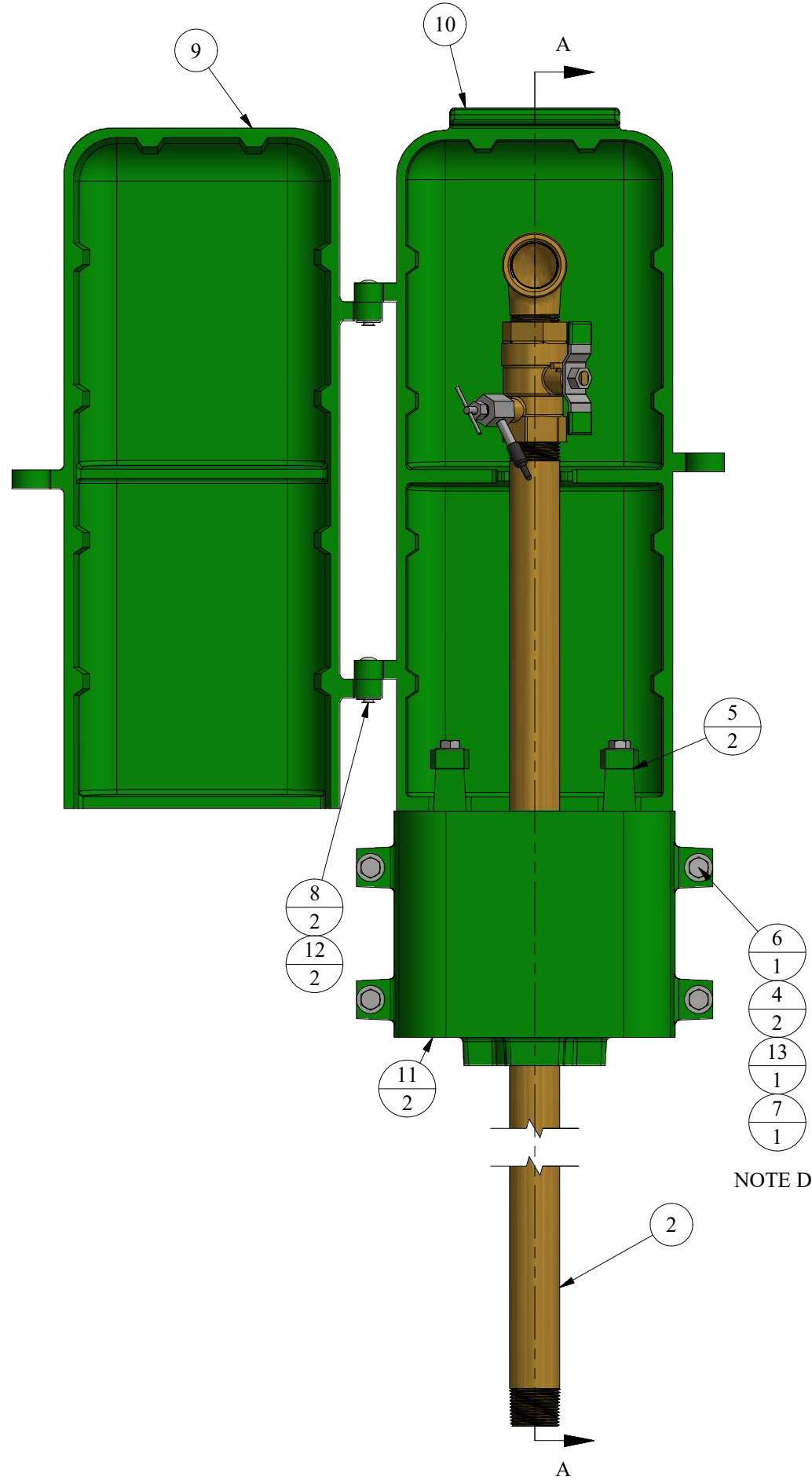
#88WC CUT SHEET

PARTS LIST

ITEM	QTY	PART NUMBER	DESCRIPTION	NOTES
1	1	190BSL	1" BRASS STREET ELBOW	C
2	29.040 in	1BP	1" BRASS PIPE	B,C
3	1	1BV	1" BRASS BALL VALVE w/ TAP	C
4	10	88-14	ENCLOSURE FLAT WASHER	
5	2	88-15	3° WEDGE WASHER	
6	6	88-4	ENCLOSURE BOLT	
7	6	88-5	ENCLOSURE NUT	
8	2	88-6	RIVET FOR 88 COVER	C
9	1	88-A	"NEW STYLE" 88 COVER "A"	C,R
10	1	88-B	"NEW STYLE" 88 COVER "B"	C,R
11	2	88-C	"NEW STYLE" 88 BASE	C,R
12	2	9419	RIVET FLAT WASHER	C
13	6	9465-88	ENCLOSURE LOCK WASHER	
14	1	66S01	PETCOCK BODY	
15	1	66S08	O-RING (PETCOCK PACKING NUT)	
16	1	66S04	HANDLE PIN	
17	1	66S05	PETCOCK NOZZLE	
18	1	66S02	PETCOCK NUT	
19	1	66S10	O-RING (PETCOCK STEM)	
20	1	66S03	PETCOCK PLUNGER	
21	1	66S22	PETCOCK CAP	C

OPTIONAL PARTS LIST

22	0	1BVSS	1" S.S. BALL VALVE w/ TAP	A,C
23	0	1BVSSLH	1" S.S. BALL VALVE	A,C
24	0	4FBE	PEDESTAL PIPE - 2.8 FT	
25	0	678	COUPLING FOR 88 PEDESTAL	
26	0	88-22	88 ENCLOSURE GASKET	
27	0	88-23	88 PEDESTAL BOLT	
28	0	88-A-LOGO	88 FRONT COVER WITH LOGO	A,C,R

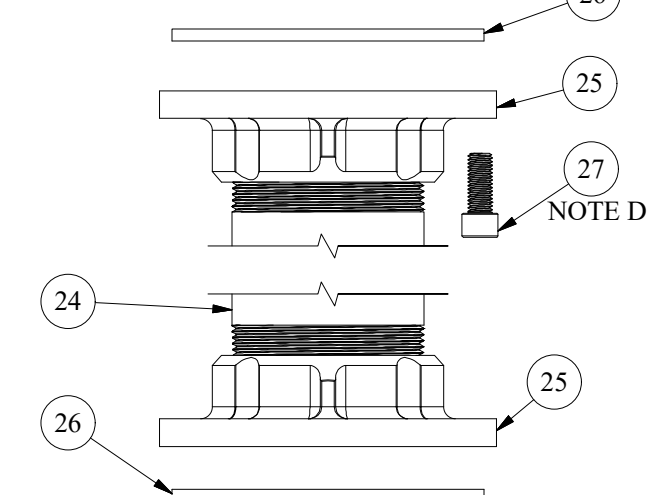


SECTION A-A
CENTER SECTION VIEW

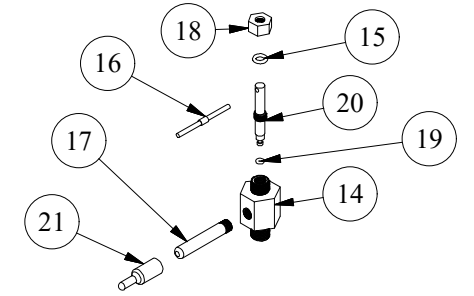
REPAIR KITS

PART NUMBER	DESCRIPTION	PARTS INCLUDED
X66-PETCOCK	STAINLESS STEEL PETCOCK ASSEMBLY	66S01 BODY (1), 66S08 O-RING (1), 66S02 NUT (1), 66S03 PLUNGER (1), 66S10 O-RING (1), 66S04 PIN (1), 66S05 NOZZLE (1), 66S22 CAP (1)
X881	ALUMINUM COVER COMPLETE (2018 +)	88-A FRONT COVER (1), 88-B BACK COVER (1), 88-6 RIVET (2), 9419 FLAT WASHER (2)
X882	ALUMINUM BASE COMPLETE (2018+)	88-C BASE (2), 88-4 BOLT (4), 9465-88 LOCK WASHER (4), 88-6 NUT (4), 88-14 FLAT WASHER (8)
X883	ALUMINUM COVER AND BASE COMPLETE (ALL UNITS)	88-A FRONT COVER (1), 88-B BACK COVER (1), 88-C BASE (2), 88-6 RIVET (2), 88-4 BOLT (6), 88-15 WEDGE WASHER (2), 9465-88 LOCK WASHER (6), 88-5 NUT (6), 88-14 FLAT WASHER (12), 9419 FLAT WASHER (2)

OPTIONAL PEDESTAL (3' STANDARD)



PETCOCK ASSEMBLY



NOTE	DESCRIPTION
A	NOT SHOWN
B	PIPE LENGTH DEPENDENT ON DEPTH OF BURY, SHOWN AS 1'
C	SOLD AS REPLACEMENT PART
D	BOLT ASSEMBLY USED ON ALL SIMILAR HOLES/BRAKETS
P	SEE PETCOCK ASSEMBLY FOR PARTS INFORMATION
R	POWDER COATING OPTIONS AVAILABLE

DISCLAIMER:
THIS DRAWING IS THE PROPERTY OF THE KUPFERLE FOUNDRY COMPANY. IT IS NOT TO BE USED OR DUPLICATED WITHOUT THE PERMISSION OF THE OWNER.

LEGEND

(X)	STANDARD TAG
(X/Y)	TAG WITH Y QUANTITY

DRAWN	10/31/2017
CHECKED	
DCL	1/15/2018
MODIFIED	
KJW	02/25/2021
SIZE	C
SCALE	1 / 4
DWG NO	#88WC Cut_Rev0.3



SHEET	1 OF 1
REV	0.3