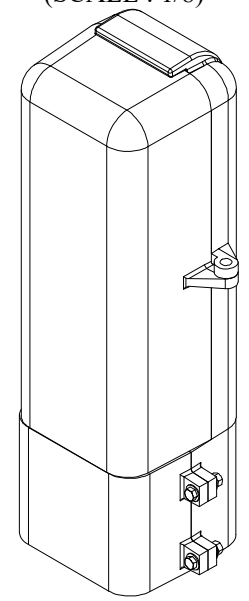


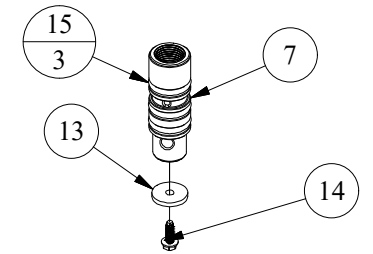
#903 CUT SHEET

OPTIONAL ENCLOSURE

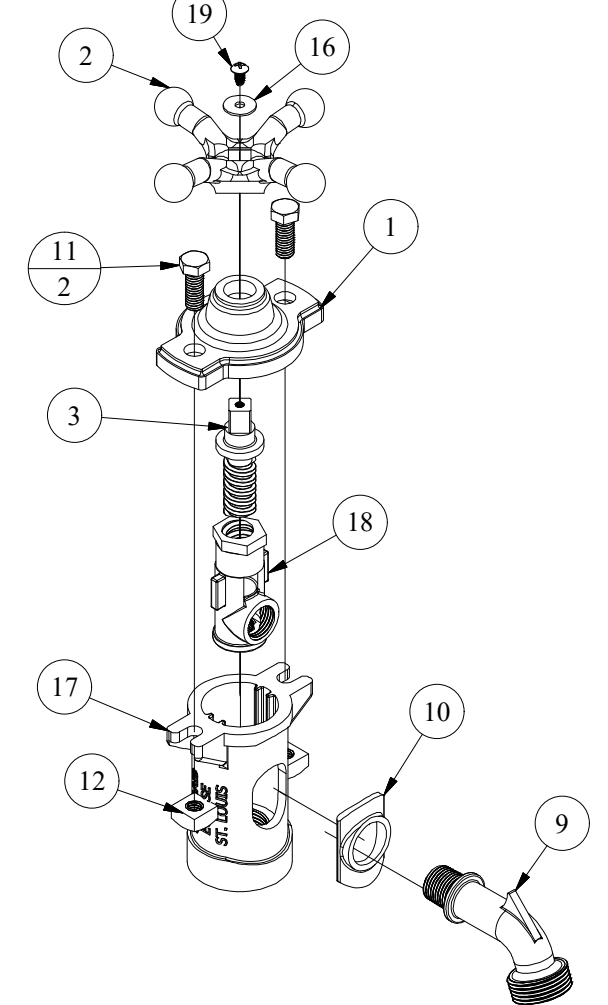
(SCALE : 1/8)



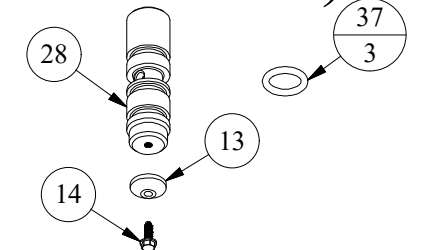
PLUNGER ASSEMBLY



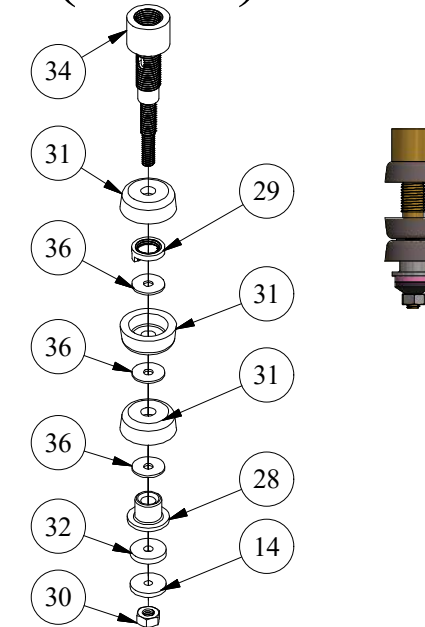
TOP ASSEMBLY



OLD STYLE PLUNGER WITH O-RINGS (X905-2002)



OLD STYLE PLUNGER WITH LEATHERS (X905)



PARTS LIST

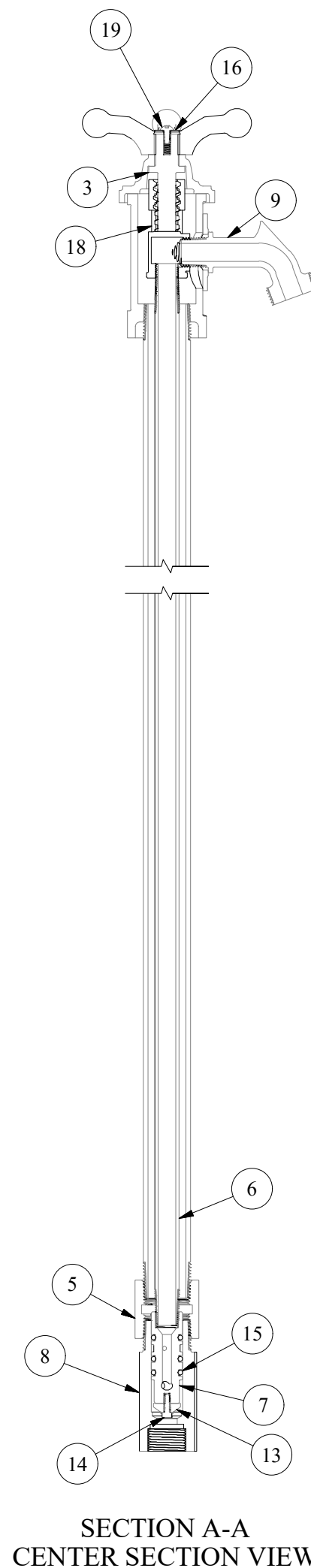
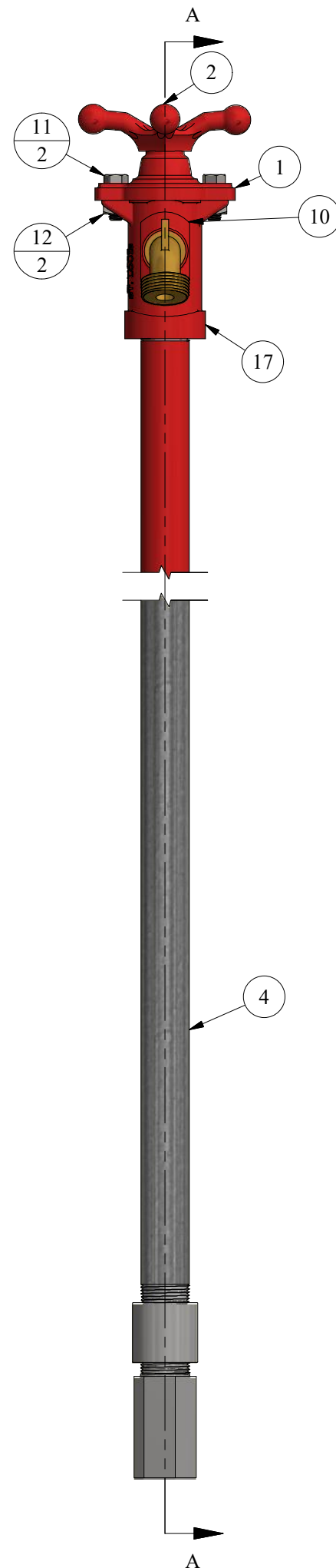
ITEM	QTY	PART NUMBER	DESCRIPTION	NOTES
1	1	124	HYDRANT CAP	C,S
2	1	134	HANDLE	C,S
3	1	137	OPERATING SCREW	C
4	46.000 in	1GAL	1" GALVANIZED PIPE	B,C,S
5	1	1SSC	1" S.S. COUPLING	
6	47.875 in	3/8SSP	3/8" S.S. (316) PIPE	B,C
7	1	305	"S.S. 300 STYLE" 3/4" PLUNGER	
8	1	306	"S.S. 300 STYLE" 3/4" VALVE	C
9	1	320	3/4" BRASS NOZZLE	C
10	1	322	SLIDING COVER	C,S
11	2	344-B	TOP CAP BOLT	C
12	2	344-N	TOP CAP NUT	C
13	1	418-B	BEVELED BIBB WASHER	C
14	1	66S28	PLUNGER SCREW	C
15	3	88-21	PLUNGER O-RING	C
16	1	88-24	HANDLE WASHER	C
17	1	915	BRASS ELBOW	C
18	1	918	NOZZLE SECTION	C
19	1	9452-88	HANDLE SCREW	C

OPTIONAL PARTS LIST

ITEM	QTY	PART NUMBER	DESCRIPTION	NOTES
20		2OR	3/4" PLUNGER O-RING	
21		905	CORN KING PLUNGER OLD STYLE	
22		311	PLUNGER NUT	
23		309	CONE WASHER	
24		310	WING NUT	
25		9460	PLUNGER WASHER	
26		418-A	FLAT WASHER	
27		327	CUP LEATHER	C
28		905-NS	PLUNGER	C
29		900	BRASS CORN KING VALVE	A,C

OLD STYLE PARTS LIST

ITEM	QTY	PART NUMBER	DESCRIPTION	NOTES
30	0	88-A	NEW STYLE 88 COVER "A"	A,C,R
31	0	88-B	NEW STYLE 88 COVER "B"	A,C,R
32	0	88-C	NEW STYLE BASE	A,C,R
33	0	88-14	ENCLOSURE FLAT WASHER	A
34	0	88-15	3° WEDGE WASHER	A
35	0	88-4	ENCLOSURE BOLT	A
36	0	88-5	ENCLOSURE NUT	A
37	0	88-6	RIVET FOR 88 COVER	A



REPAIR KITS

PART NUMBER	DESCRIPTION	PARTS INCLUDED
X130	TOP CAP COMPLETE	134 HANDLE (1), 124 HYDRANT CAP (1), 137 OPERATING SCREW (1), 344-B TOP CAP BOLT (2), 344-N TOP CAP NUT (2), 9452-88 HANDLE SCREW (1), 88-24 HANDLE WASHER (1)
X305-2018	PLUNGER COMPLETE 2018+	305 PLUNGER (1), 88-21 O-RING FOR PLUNGER STEM (3), 418-B BEVELED BIBB WASHER (1), 66S28 PLUNGER SCREW (1)
XFIG.K-2018	VALVE WASHER REPAIR KIT 2018+	88-21 O-RING FOR PLUNGER STEM (3), 418-B BEVELED BIBB WASHER (1), 6628 SCREW (1)
OLD STYLE REPAIR KITS		
X905	PLUNGER COMPLETE PRE 2002	905 CORN KING PLUNGER (1), 327 CUP LEATHER (3), 9410 WASHER (3), 310 WING NUT (1), 309 CONE WASHER (1), 418-A FLAT WASHER (1), 418-B BEVELED BIBB WASHER (1), 311 PLUNGER NUT (1)
X905-2002	PLUNGER COMPLETE 2002 - 2018	905-NS CORN KING PLUNGER (1), 2OR O-RING FOR PLUNGER STEM (3), 418-B BEVELED BIBB WASHER (1), 66S28 PLUNGER SCREW (1)
XFIG.K	VALVE WASHER REPAIR KIT PRE 2002	327 CUP LEATHER (3), 418-A FLAT WASHER (1), 418-B BEVELED BIBB WASHER (1)
XFIG.K-2002	VALVE WASHER REPAIR KIT 2002 - 2018	2OR O-RING FOR PLUNGER STEM (3), 418-B BEVELED BIBB WASHER (1)

NOTE	DESCRIPTION
A	NOT SHOWN
B	PIPE LENGTH DEPENDENT ON DEPTH OF BURY, SHOWN AS 2'
C	SOLD AS REPLACEMENT PART
R	POWDER COATING OPTIONS AVAILABLE
S	SPECIFY COLOR ON ORDER

DISCLAIMER
THIS DRAWING IS THE PROPERTY OF THE KUPFERLE FOUNDRY COMPANY. IT IS NOT TO BE USED OR DUPLICATED WITHOUT THE PERMISSION OF THE OWNER.

LEGEND

(X)	STANDARD TAG
(X/Y)	TAG WITH Y QUANTITY

DRAWN	11/15/2016
SMS CHECKED	
DCL MODIFIED	12/2/2016
KJW	1/21/2021
SIZE	C
SCALE	1/4
DWG NO	#903 Cut_Rev0.1



SHEET	1 OF 1
REV	0.1