



MAINGUARD #44MS-4 WASHDOWN STAND



Standard



With Monitor

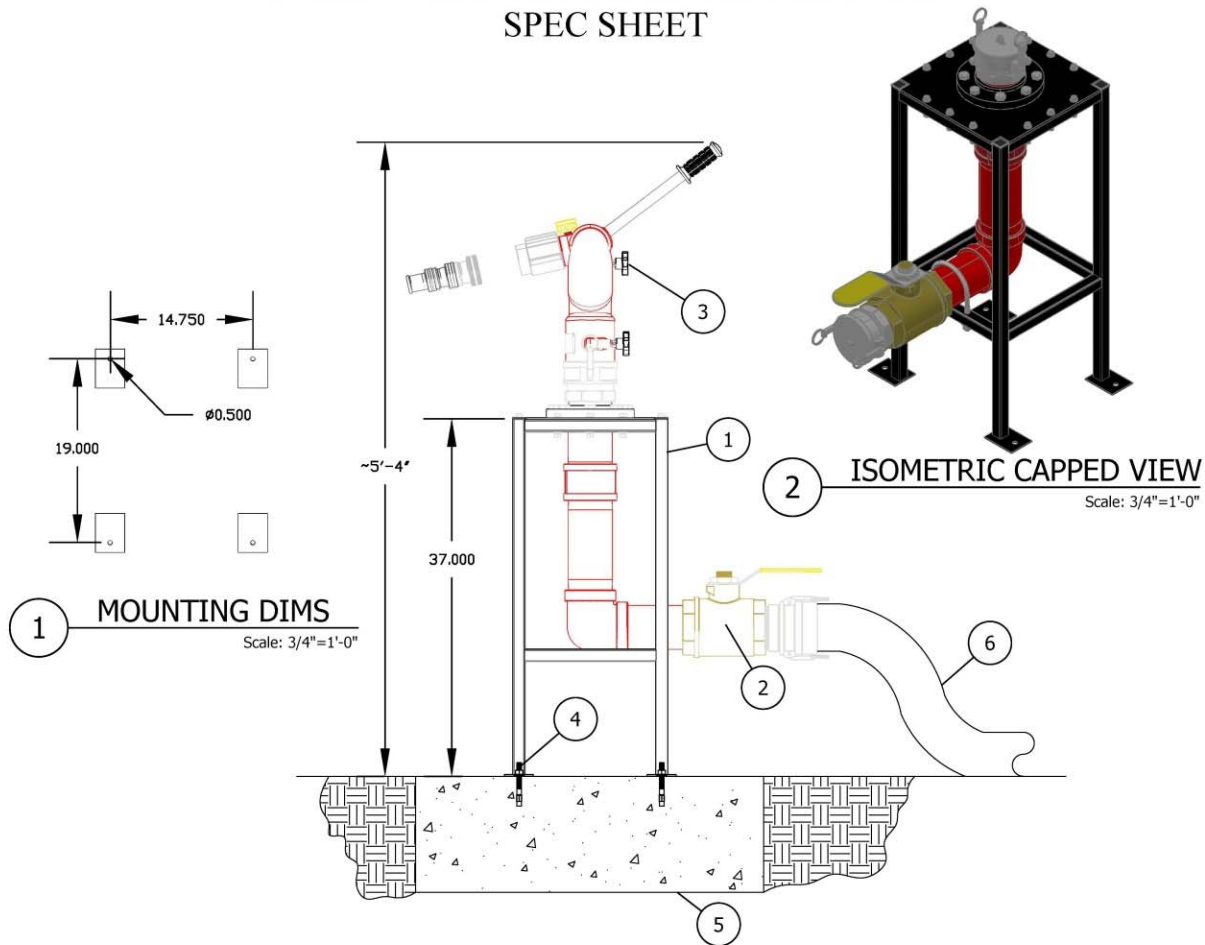
The MainGuard #44MS-4 four inch washdown stand is designed for washing down retention basins, clarifiers, sludge holding tanks and equalization basins at wastewater treatment plants.

FEATURES:

- Heavy duty steel mounting frame
- 4" stainless steel horizontal inlet
- 4" stainless steel outlet w/dust cap
- 4" brass ball valve
- Bolts to a concrete pad
- Water supplied by connecting 4" hose
- Spray range up to 190 feet/1346gpm @75psi
- Cuts cleanup time by up to 87%
- No more hose dragging or entering basin - reducing injury incidents!



#44MS-4 MOUNTABLE MONITOR STAND SPEC SHEET



MOUNTABLE MONITOR STAND SHALL BE INSTALLED ON A CONCRETE PAD THAT IS AT LEAST ' x ' AND " THICK. STAND SHALL BE ANCHORED TO THE CONCRETE VIA CONCRETE ANCHORS OR LAGS. ANCHORS OR LAGS SHALL BE INSTALLED ACCORDING TO MANUFACTURERS INSTRUCTIONS.

A 4" VULCAN MONITOR MAY BE ATTACHED TO THE TOP OF THE STAND VIA A PAIR OF STAINLESS STEEL QUICK DISCONNECTS. A SUPPLY LINE SHALL BE CONNECT TO THE STAND VIA ANOTHER PAIR OF STAINLESS STEEL QUICK DISCONNECTS. A BALL VALVE, LOCATED IMMEDIATELY AFTER THE INLET. DISCONNECT SHALL ALLOW FOR FLOW CONTROL AT THE WASH DOWN LOCATION.

WATER MUST BE TURNED OFF AT THE SOURCE AND THE BALL VALVE PLACED IN THE OPEN POSITION BEFORE ANY QUICK DISCONNECTS ARE OPENED.

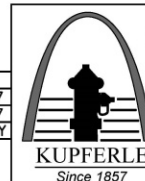
THE 4" MOUNTABLE MONITOR STAND AS MANUFACTURED BY THE KUPFERLE FOUNDRY, ST. LOUIS MO. 63102 OR APPROVED EQUAL.

ITEM	ITEM / DESCRIPTION	NOTES
1	4" MONITOR STAND	
2	4" BALL VALVE	
3	4" MOUNTABLE MONITOR HYDRANT	
4	CONCRETE ANCHORS/LAGS	BY OTHERS
5	CONCRETE PAD	BY OTHERS
6	4" SUPPLY LINE	BY OTHERS

MOUNTABLE MONITOR STAND TO BE INSTALLED AT THE FOLLOWING LOCATIONS:

DISCLAIMER: KUPFERLE'S #44MS HYDRANT AND MOUNTING STAND ARE DESIGNED TO BE USED ON POTABLE WATER SYSTEMS ONLY AND RATED FOR A MAXIMUM PRESSURE OF 250 PSI. PROPER ANCHORING OF THE STAND TO CONCRETE IS SOLEY THE RESPONSIBILITY THE INSTALLER.

		INITIALS	DATE
		DRAWN SMS	04/06/17
		APPROVED DCL	04/06/17
		MODIFIED XXX	MM/DD/YY
DD/MM/YY	ISSUED FOR REFERENCE	SCALE 1"=1'	
DATE	STATUS / REVISION	#44MS-4 4" MOUNTABLE MONITOR STAND	



2511 NORTH 9TH STREET
ST. LOUIS, MO 63102
1-800-231-3990
FAX 314-231-2820
www.hydrants.com

SHEET 1 OF 1



2511 North 9th Street
St. Louis, MO 63102
800-231-3990
www.hydrants.com
info@hydrants.com



See Monitor Video at
[Youtube.com/kupferle1857](https://www.youtube.com/kupferle1857)