

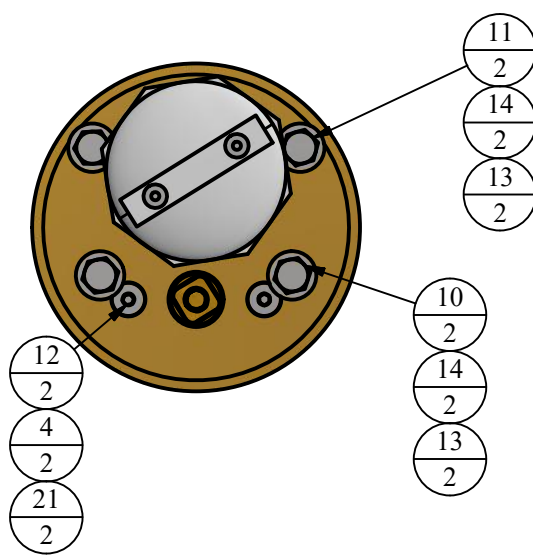
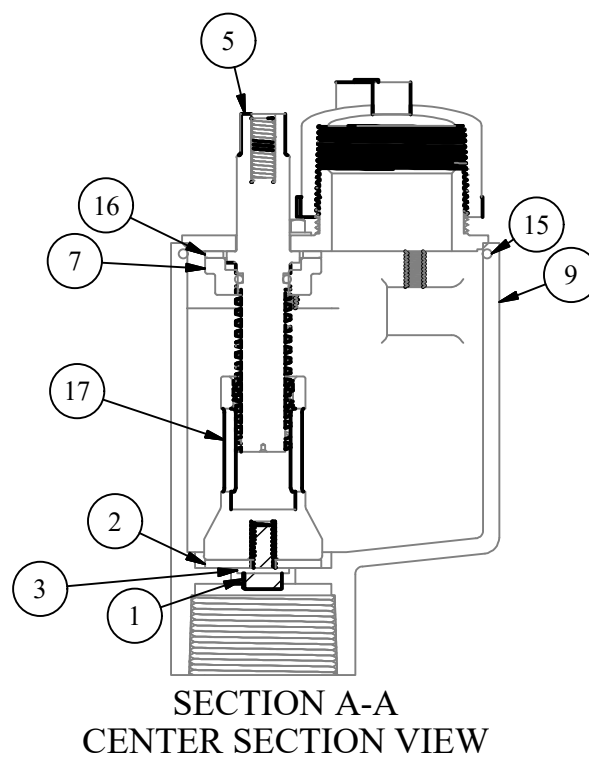
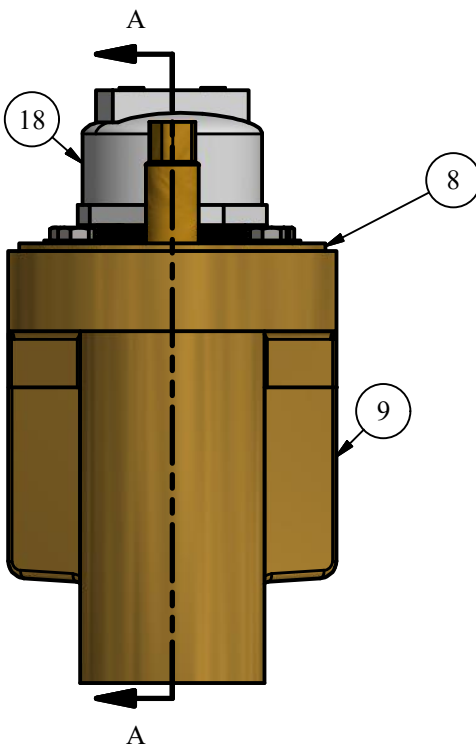
#TF-550 CUT SHEET

PARTS LIST

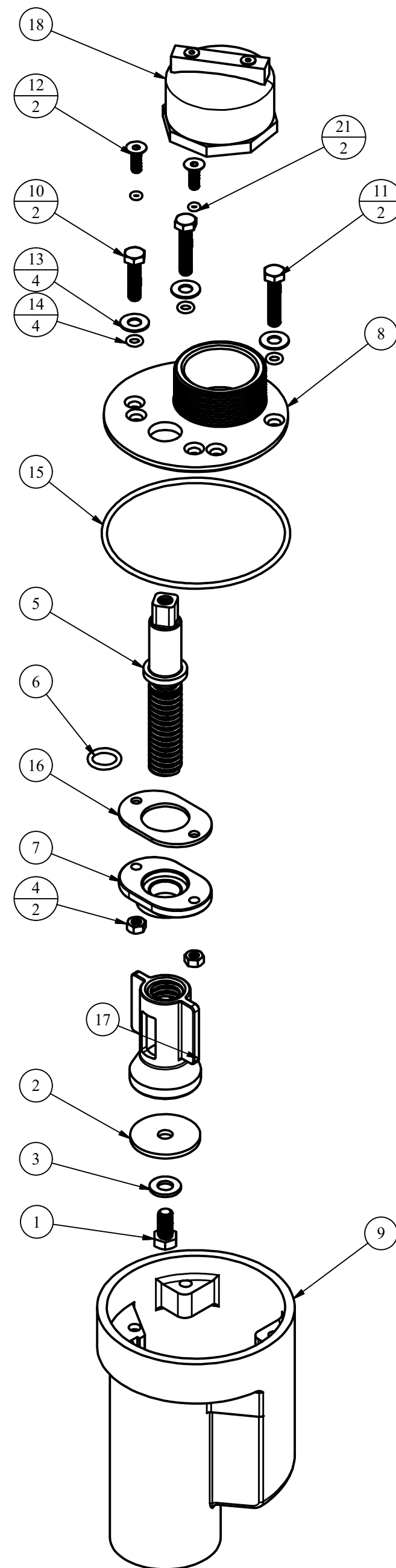
ITEM	QTY	PART NUMBER	DESCRIPTION	NOTES
1	1	77C	SEAT WASHER BOLT	
2	1	77I	SEAT WASHER	C
3	1	77W	WASHER FOR PLUNGER	
4	2	345-N-500	NUT FOR SOCKET BOLT	
5	1	10204	BRASS TRUFLO OPERATING SCREW	
6	1	10220	O-RING FOR TRUFLO OPERATING SCREW	C
7	1	10500	BRASS WASHER	C
8	1	10501	BRASS LID WITH NOZZLE	C
9	1	10502-BLL	TF-550 BRASS HEADSTOCK CUP	C
10	2	10505	SHORT BOLT FOR LID	
11	2	10506	LONG BOLT FOR LID	
12	2	10507-B	SOCKET BOLT FOR TRUFLO OPERATING SCREW	C
13	4	10508	WASHER FOR LID BOLT	
14	4	10509	O-RING FOR LID BOLTS	
15	1	10510	O-RING FOR LID	C
16	1	10511	GASKET FOR TRUFLO OPERATING SCREW	C
17	1	10551	TF-550 BRASS PLUNGER	C
18	1	X10504	PLASTIC NOZZLE CAP COMPLETE	
21	2	92-OO	PLUNGER TIP O-RING	

OPTIONAL PARTS LIST

ITEM	QTY	PART NUMBER	DESCRIPTION	NOTES
19	0	ZTF500W-6	6" OPERATING WRENCH	A
20	0	ZTF500W-24	24" OPERATING WRENCH	A
21	0	ZTF500W-36	36" OPERATING WRENCH	A



LID ASSEMBLY



REPAIR KITS

PART NUMBER	DESCRIPTION	PARTS INCLUDED
X10204	TRUFLO BRASS TOP SCREW COMPLETE	10204 SCREW (1), 10220 O-RING (1)
X10504	PLASTIC NOZZLE CAP COMPLETE	10504 CAP (1), 93-G SQUARE ROD (1), 66S63 RIVET (2)

LEGEND

- (X) → STANDARD TAG
- (X/Y) → TAG WITH Y QUANTITY

DISCLAIMER:
THIS DRAWING THE PROPERTY OF THE KUPFERLE FOUNDRY COMPANY. IT IS NOT TO BE USED OR DUPLICATED WITHOUT THE PERMISSION OF THE OWNER.

NOTE	DESCRIPTION
A	NOT SHOWN
C	SOLD AS REPLACEMENT PART

DRAWN	SMS	11/1/2017
CHECKED	DCL	2/8/2018
MODIFIED	KJW	8/26/2020
SIZE	C	
SCALE		1/3
DWG NO	#TF-550 Cut_Rev1.1	



2511 NORTH 9TH ST.
ST. LOUIS, MO 63102
1-800-231-3990

SHEET	REV
1 OF 1	1.1