

Truflo TF100 Post Hydrant

Specify Kupferle's *Premium* Truflo TF100 3/4" & 1" Washdown Hydrant for Potable Water Applications



Truflo #TF100

- Basic Hydrant Style – No Casing Guard
- All Brass/Bronze and Steel Construction
- Optional Riser Pipe and Operating Rod Materials of Construction i.e. Steel as shown, Galvanized Steel, #316 Stainless Steel or brass.
- No-lead brass available
- Outlet Sizes 3/4 GHT or 1" MNPT
- Aluminum, Stainless Steel or Brass Cam & Groove Quick Disconnect Adapters available
- Inlet sizes 3/4" or 1" MNPT Bronze Vertical Inlet.
- Maintainable from Above Ground, no digging
- Optional Backflow Prevention including Outlet Vacuum Breaker and/or Double Ball Check Valve on Drain
- Four Spoke Ball Wheel Operating Handle
- Optional Deck Mount Flange
- Unique Valve Delivers Full-Flow

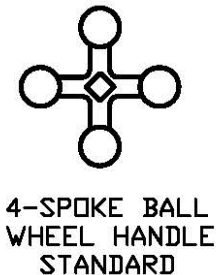
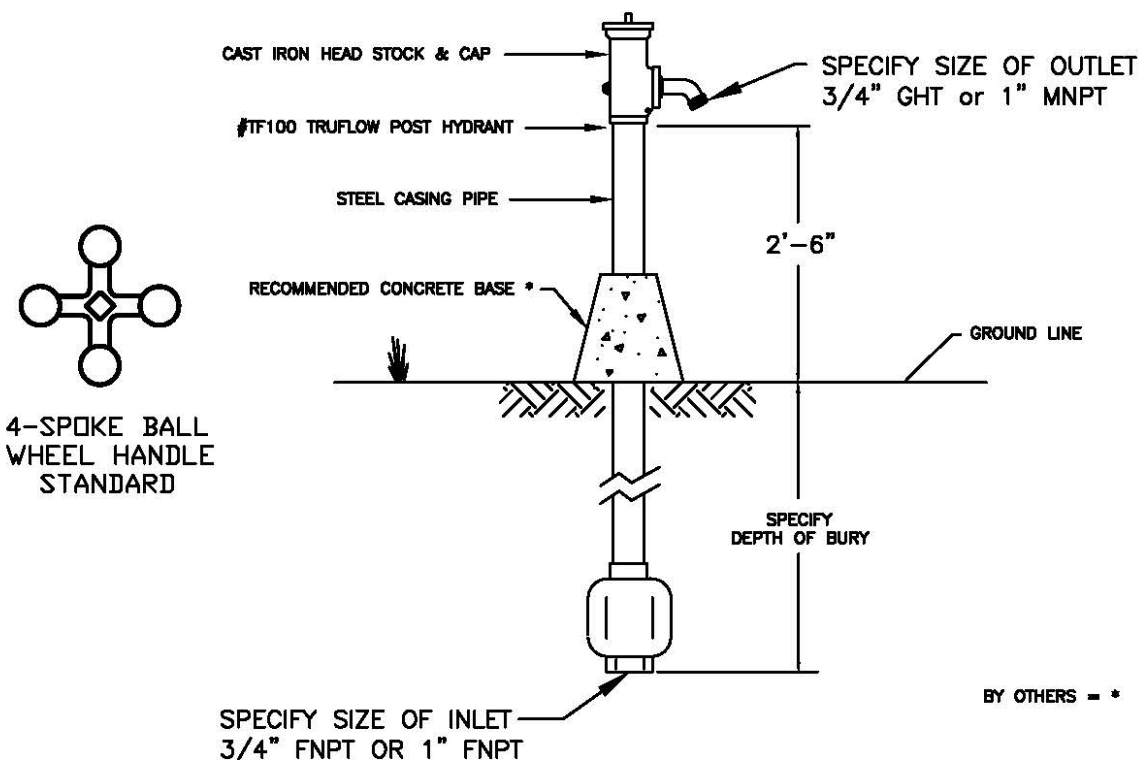
TRUFLO™



The Kupferle Foundry Company
2511 North 9th Street
St. Louis, MO 63102
800-231-3990 / www.hydrants.com
Contact us at info@hydrants.com



TF100 TRUFLO POST HYDRANT NO CASING GUARD



Hydrant shall be ____ ' Depth of Bury with a 3/4" or 1" FNPT vertical inlet and a 3/4" GHT or 1" MNPT outlet.

Hydrant shall be non-freezing, self draining. Hydrant shall have a cast iron head and cap, a (steel (STD), galvanized steel, stainless steel or brass) exterior casing pipe, a (steel (STD), galvanized steel, stainless steel or brass) non-turning interior operating rod and bronze valve body. Hydrant shall be operated by 9/16" square operating nut with a 4-spoke ball wheel operating handle.

Hydrant must seal the drain outlet in all positions from 1/4 closed to fully open. All internal; working part shall be removable from above ground with no digging required.

Hydrant shall be set in 4 cubic feet of crushed stone to allow for proper drainage of the hydrant, Recommendations of the AWWA should be followed for installation of the hydrants.

Hydrant shall be Model TF100 TruFlow Post Hydrant as manufactured by the Kuperle Foundry Company, St. Louis, MO 63102 or approved equal.

			DRAWN G.B.	 KUPFERLE FOUNDRY COMPANY 2511 NORTH 9TH STREET, ST. LOUIS, MO 63102 314-231-8738 800-231-3990 FAX 314-231-2820 http://www.hydrants.com
			APPROVED	
			DATE	
			MAT'L	
DATE	REVISION	THIS DRAWING IS THE PROPERTY OF THE KUPFERLE FOUNDRY COMPANY. IT IS NOT TO BE USED OR DUPLICATED WITHOUT PERMISSION OF THE OWNER.	PART NO. #2 ECLIPSE POST HYDRANT	SHEET OF