

Eclipse i-Series #9800i-WC-24LIS_A



The Intelligent Solution for Water Distribution Systems™
ECLIPSE
i series



Intelligent Monitoring
and Flushing Station
for Warm Climates

Standard Features

- Scalable design to accommodate up to 8 sensors plus temperature and pressure
- Utilizes a Programmable Logic Controller (PLC) including an easy to use local touchscreen HMI
- Amperometric chlorine sensor (reagentless), for direct monitoring without altering sample stream
- Data collection of all water quality and flushing data, stored locally
- Captures all water quality and flushing data on micro SD and is SCADA compatible
- RV50 Wireless Gateway standard, allowing remote communication via SCADA, apps, etc.
- Comes standard with 2 micro-SD cards / 2 adapters for manual data retrieval
- On-site training and commissioning included in purchase

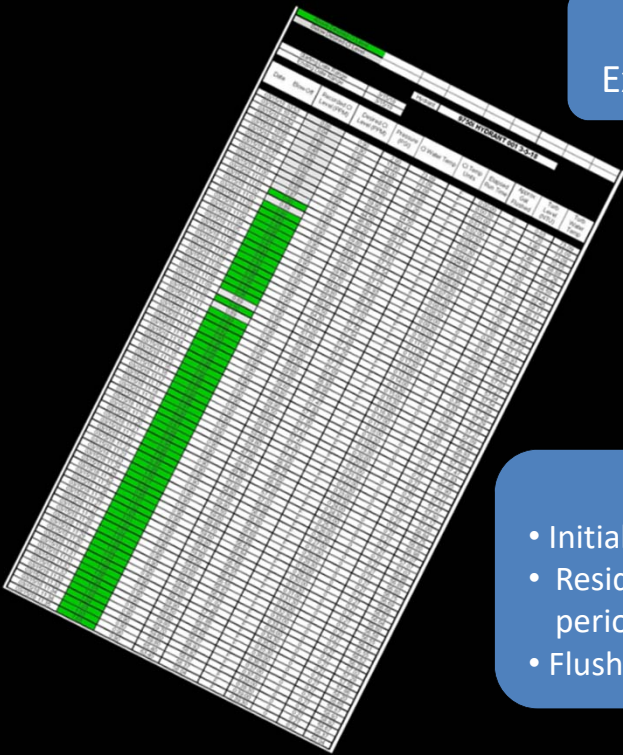
Available Sensors:

- Free Chlorine
- Combined Chlorine
- Total Chlorine
- Pressure
- Turbidity
- ORP
- Dissolved Oxygen
- Conductivity
- Fluoride
- Others on request

Model Specific Features

- Solar powered permanent intelligent flusher
- Monitors and flushes (up to 200 gpm) to maintain programmable water quality goals
- Provides flushing summaries and data logs for maximized efficiency
- Below grade 2" MIP connection with 6" discharge (field, storm, sewer)
- Stand alone turnkey design is ideal for sites where solar is an option
- Power (solar recharging 24 VDC lithium ion battery package) included
- Lockable UV resistant flushing enclosure / locking powder-coated control pedestal RV50

Pre-formatted
Excel worksheets!



Graphic Displays:

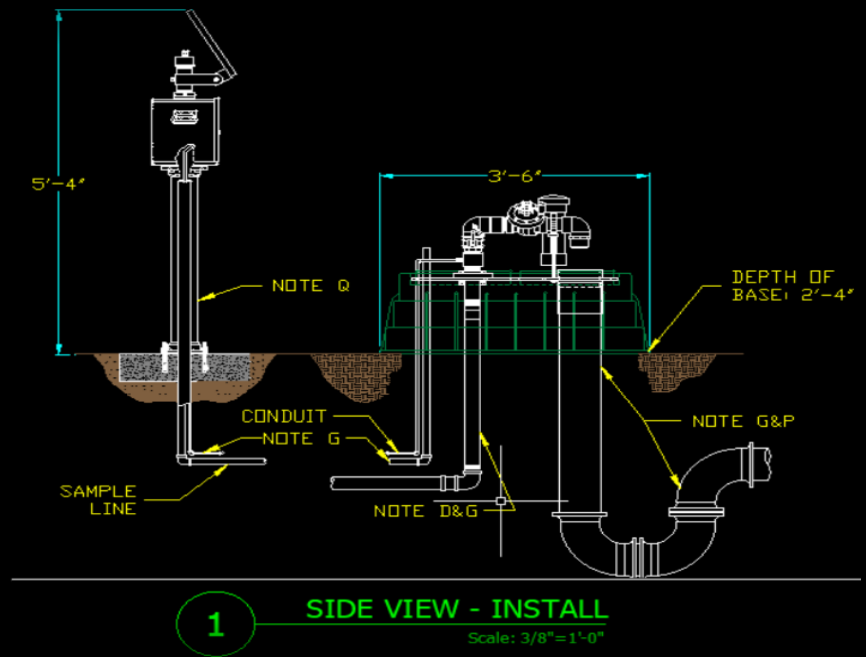
- Initial vs. final residuals data
- Residual levels over time period
- Flushing duration data



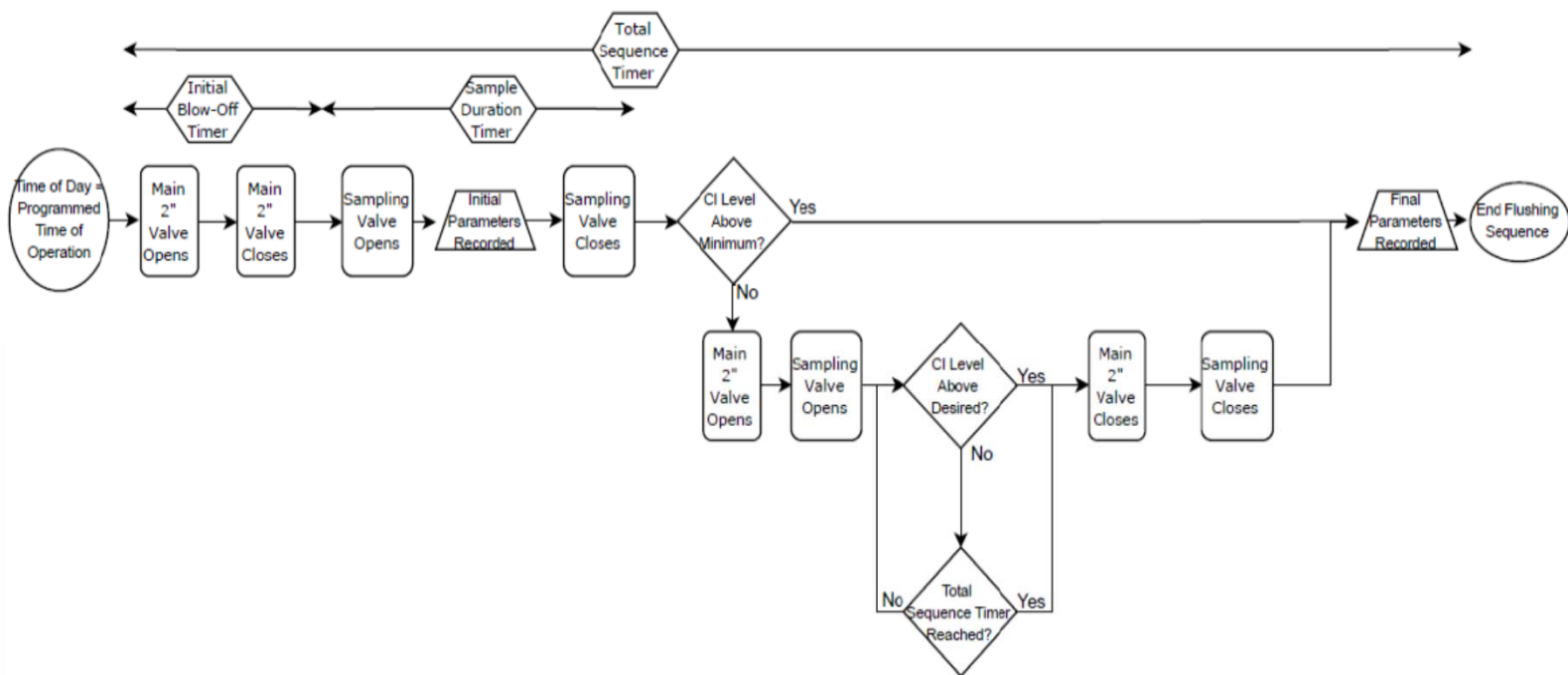
By implementing analytical sensors into traditional flushing applications, Kupferle's Eclipse i-Series Intelligent Product Line can provide the valuable data required to allow a distribution system to function more efficiently. With the ability to program and maintain water quality parameter(s), such as chlorine residual, utilities can identify troublesome or concerning water quality issues, such as water aging, and utilize flushing to help remedy the situation. Efficiency is increased and taken to the next

level, when the i-series products flush the water line based on specific user defined water quality parameters. At the same time, during this process the intelligent products provide further clarity as to what parameters should and can be met.

By implementing PLCs and wireless gateways into the design of these products Kupferle has developed an open-ended platform that allows users to tie into existing SCADA systems, set up a dedicated distribution SCADA system, automate report generation, or just manually retrieve data from the site using micro SD cards.



How Does It Work?

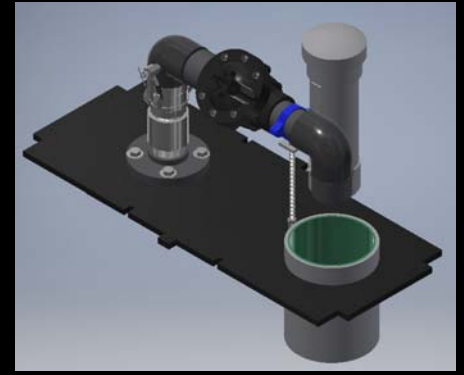




Sampling Assembly



Control & Power Enclosure



Flushing Valve Assembly

i-SERIES PRODUCT ORDERING GUIDE																		
MODEL#	9800i	-	WC	-	24LIS_A	-	0	-	*	-	X	-	*	-	*	*	*	*
SUBSECTION	1		2		3		4		5		6		7		8	9	10	11
MODEL SHOWN IN VIEW 1: 9800i-WC-24LIS_A-0-A-X-A-AD																		
SUBSECTION DESCRIPTION	MODEL # SUBSECTION		OPTIONS		DESCRIPTIONS													
MODEL	1		9800i		PERMANENT i-SERIES HYDRANT													
CLIMATE	2		WC		WARM CLIMATES													
POWER	3		24LIS_A		24 VDC, 20+ AMP HOUR LITHIUM ION BATTERY WITH PEDESTAL MOUNTED CONTROL ENCLOSURE w/ SOLAR RECHARGING PANEL MOUNTED ON TOP													
DEPTH OF BURY	4		0		N/A													
COMMUNICATION	5		X		NONE													
			A		CELLULAR (RV50 GATEWAY)													
			B		ALARM INDICATION LIGHT													
			C		ETHERNET CARD ADDED													
BUILD OPTIONS	6		X		STANDARD													
			7		DECHLORINATION TABLET FEEDER													
PRESSURE SENSOR	7		X		NONE													
			A		ANALOG 0-200.0 PSI SENSOR													
CHOOSE UP TO 4 SENSORS FOR SUBSECTIONS 8-11. LEAVE UNUSED SUBSECTIONS BLANK.																		
SENSORS	8 - SENSOR #1		A - FREE CHLORINE		H - DISSOLVED OXYGEN													
	9 - SENSOR #2		B - COMBINED CHLORINE		I - FLUORIDE													
	10 - SENSOR #3		C - TOTAL CHLORINE		J - DISSOLVED OZONE													
	11 - SENSOR #4		D - pH		K - CHLORINE DIOXIDE													
	12 : 15 - ADDITIONAL SENSORS #5 : #8		E - TURBIDITY		L - PERACETIC ACID													
			F - ORP		M - HYDROGEN PEROXIDE													
			G - CONDUCTIVITY		X - CUSTOM (CALL)													
PLEASE SEE CUT SHEET FOR UPGRADES AND AVAILABLE OPTIONS																		



2511 North 9th Street | St. Louis, MO 63102
800-231-3990 | www.hydrants.com | info@hydrants.com