

PARTS LIST

ITEM	QTY	PART NUMBER	DESCRIPTION	NOTES
1	51.000 in	1/2SSP	1/2" S.S. PIPE	B,C
2	52.750 in	3/8SSR	3/8" S.S. ROD	B,C
3	4	345-N-9400	PLATFORM NUT	
4	2.000 in	4 ALUM ANGLE	MOUNTING ANGLE	
5	1	66S01	PETCOCK BODY	
6	1	66S02	PETCOCK NUT	
7	1	66S03	PETCOCK PLUNGER	
8	1	66S04	HANDLE PIN	
9	1	66S05	PETCOCK NOZZLE	
10	1	66S07	O-RING (PACKING NUT)	
11	1	66S08	O-RING (PETCOCK PACKING NUT)	
12	1	66S09	O-RING (STEM)	
13	1	66S10	O-RING (PETCOCK STEM)	
14	1	66S12	NOZZLE	
15	1	66S14	HANDLE/KNOB PIN	
16	1	66S15	PACKING NUT	
17	1	66S16	HEADSTOCK TOP NUT	
18	2	66S20	S.S. U-BOLT FOR 1/2" PIPE	
19	1	66S22	PETCOCK PLASTIC CAP	C
20	1	66S22	PETCOCK CAP	
21	1	66S25	VALVE (COLD CLIMATE)	C
22	1	66S26	PLUNGER (COLD CLIMATE)	
23	1	66S27	SEAT RUBBER	C
24	1	66S28	SCREW FOR SEAT RUBBER	C
25	2	66S30	SPRING PIN	
26	1	66S31	HEADSTOCK (COLD CLIMATE)	
27	1	66S32	STEM (COLD CLIMATE)	
28	1	66S33	S.S. ADAPTER (1/4" COMP. x 1/8" FIP)	C
29	1	66S34	S.S. HOSE CLAMP	
30	1	66S35	NOZZLE CAP	
31	2	66S41	S.S. HEX HEAD BOLT FOR BRACKET	
32	1	66S42	KNOB	
33	10	88-14	5/16" S.S. FLAT WASHER	
34	2	88-15	3° WEDGE WASHER	
35	1	88-22	GASKET	
36	4	88-23	PEDESTAL BOLT	
37	1	88-33	1" PISTON	
38	6	88-4	S.S. HEX HEAD BOLT FOR ENCLOSURE	
39	6	88-5	S.S. HEX NUT FOR ENCLOSURE	
40	2	88-6-AL	RIVET FOR 88 COVER	C
41	44 IN	88-7-SS	1/4" S.S. TUBING	B,C
42	1	88-8-SS	1/4" COMP. x 1/8" MIP S.S. 90° ELBOW	C
43	1	88-A	"NEW STYLE" 88 COVER "A"	C,R
44	1	88-B	"NEW STLE" 88 COVER "B"	C,R
45	2	88-C	"NEW STYLE" 88 BASE	R
46	1	9400A-06	1" VALVE CYLINDER	
47	2	9400A-07	SOCKET HEAD BOLT FOR VALVE MOUNT	
48	4	9400A-10	S.S. HEX HEAD BOLT FOR TOP PLATE MOUNT	
49	8	9400A-11	S.S. SCREW FOR SEWER PIPE MOUNT	
50	3	9400A-21	O-RING FOR 1" VALVE PISTON	
51	1	9400A-29	TOP PLATE BASE ASSEMBLY	
52	1	9400A-30	DEBRIS PLATE	
53	2	9419	1/4" S.S. FLAT WASHER	
54	4	9458	1/4" S.S. LOCK WASHER	
55	6	9465	5/16" S.S. LOCK WASHER	
56	3.25	9803	6" SCH. 35 PVC PIPE	B

OPTIONS/REPAIR PARTS LIST

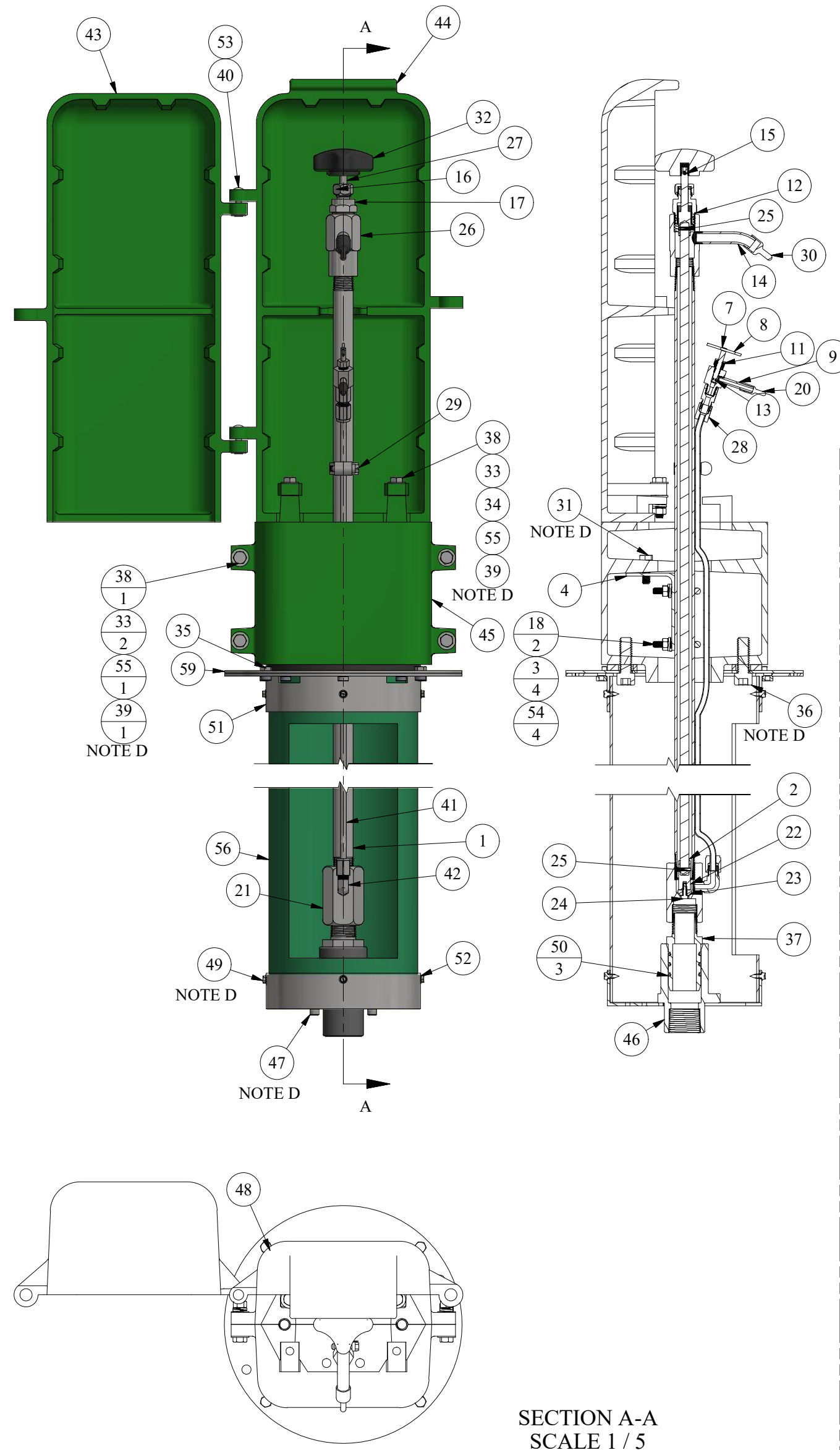
ITEM	QTY	PART NUMBER	DESCRIPTION	NOTES
57	0	88-A-LOGO	NEW STYLE 88 COVER "A" WITH LOGO	A,C,R
58	0	88P-1S	SMALL PUMP	A
59	0	Z88PS	LARGE PUMP	A
60	1	88-SS-R-PEDSTAND	PEDESTAL FOR 88-SS-R-PED	R
61	4	345-N-9400	1/4" S.S. NUT	
62	4	9438	1/2-20 X 1" S.S. HEX BOLT	
63	4	9458	1/4" S.S. LOCK WASHER	

REPAIR KITS

PART NUMBER	DESCRIPTION	PARTS INCLUDED
X66-CCHEADSTOCK	HEADSTOCK ASSEMBLY COMPLETE	66S31 HEADSTOCK (1), 66S12 NOZZLE (1), 66S35 CAP (1)
X66-CC SCREW	COLD CLIMATE TOP SCREW	66S42 KNOB (1), 66S14 ROD PIN (1), 66S32 STEM (1), 66S15 PACKING NUT (1), 66S07 PACKING NUT O-RING (1), 66S16 TOP NUT (1), 66S09 STEM O-RING (1)
X66-PETCOCK	S.S. PETCOCK ASSEMBLY	66S01 BODY (1), 66S08 NUT O-RING (1), 66S02 NUT (1), 66S03 PLUNGER (1), 66S10 PLUNGER O-RING (1), 66S04 PIN (1), 66S05 NOZZLE (1), 66S22 CAP (1)
X66-PLUNGER	#66 PLUNGER ASSEMBLY	66S26 PLUNGER (1), 66S27 SEAT RUBBER (1), 66S28 PLUNGER SCREW (1)
X66RK	88-SS REPAIR KIT	66S27 SEAT RUBBER (1), 66S28 SCREW (1)
X88-33	VALVE PISTON WITH O-RINGS	88-33 PISTON (1), 9400A-21 O-RING (3)
X881-66	ALUMINUM COVER COMPLETE	88-A FRONT COVER (1), 88-B BACK COVER (1), 88-6-AL RIVETS (2), 9419 FLAT WASHER (2)
X882-66	ALUMINUM BASE COMPLETE	88-C BASE (2), 88-4 BOLT (4), 9465-88 LOCK WASHER (4), 88-5 NUT (4), 4 ALUM ANGLE (0.25), 66S41 BOLT (2), 88-14 WASHER (8)
X883-66	ALUMINUM COVER AND BASE COMPLETE	88-A FRONT COVER (1), 88-B BACK COVER (1), 88-C BASE (2), 88-4 BOLT (6), 88-15 WEDGE WASHER (2), 9465-88 LOCK WASHER (6), 88-5 NUT (6), 88-14 WASHER (12), 4 ALUM ANGLE (0.25), 66S41 BOLT (2), 9419 WASHER (2)

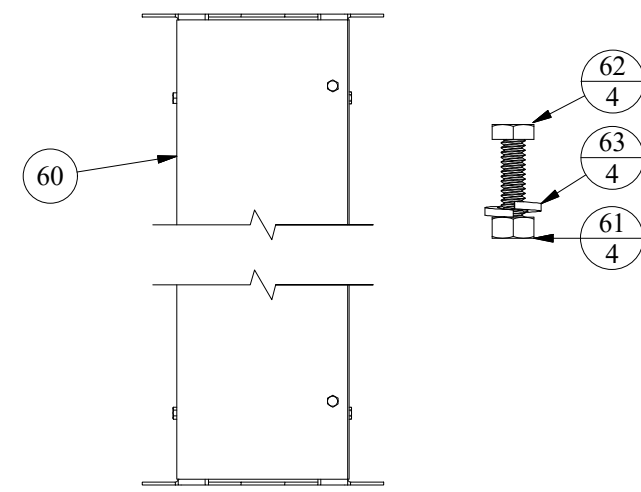
NOTE	DESCRIPTION
A	NOT SHOWN
B	PIPE LENGTH DEPENDENT ON DEPTH OF BURY, SHOWN AS 3'
C	SOLD AS REPLACEMENT PART
D	BOLT ASSEMBLY USED ON ALL SIMILAR HOLES/BRACKETS
Q	REPLACEMENT NOZZLE REQUIRES BENDING IN THE FIELD AFTER INSTALLATION
R	POWDER COATING OPTIONS AVAILABLE

88-SS-R CUT SHEET

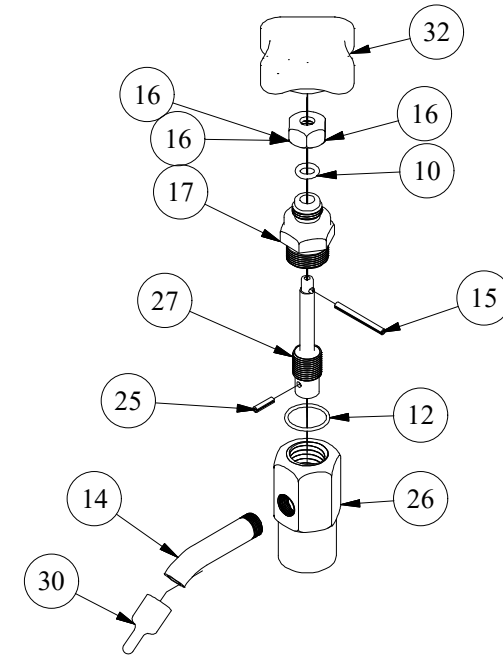


SECTION A-A
SCALE 1 / 5

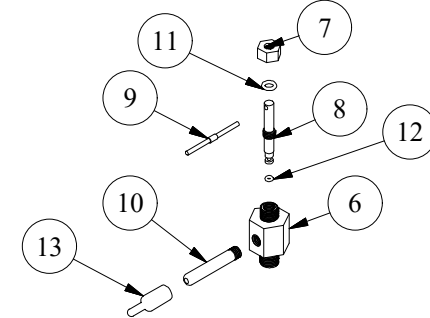
**OPTIONAL PEDESTAL
(3' STANDARD)**



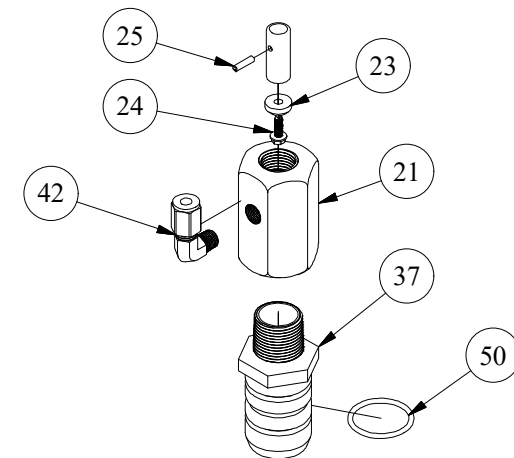
**HEADSTOCK
ASSEMBLY**



PETCOCK ASSEMBLY



VALVE ASSMEBLY



DRAWN	SMS	11/19/2018
CHECKED	KJW	12/23/2020
MODIFIED	KJW	12/23/2020
SIZE	C	SCALE 1 / 5
DWG NO	#88-SS-R Cut_Rev2	



2511 NORTH 9TH ST.
ST. LOUIS, MO 63102
1-800-231-3990

SHEET	REV
1 OF 1	2.2

LEGEND

STANDARD TAG



DISCLAIMER:
THIS DRAWING IS THE PROPERTY OF THE KUPFERLE
FOUNDRY COMPANY. IT IS NOT TO BE USED OR
DUPLICATED WITHOUT THE PERMISSION OF THE
OWNER