



Eclipse #88-SS-R Stainless Steel Sampling Station For Extreme Cold Climates

Removable
Piston
Design



Station and working parts can easily be removed for maintenance and/or in case of a valve freezing occurrence

- Piston design allows for entire station to be removed from the ground in case of freezing in extreme cold climates
- No drain to prevent cross-contamination
- 1/8" globe valve evacuation petcock to remove standing water after use during freezing seasons (hand pump sold separately)
- All surgical stainless steel waterway
- Lockable cast-aluminum enclosure
- Unthreaded 7/16" blow-off globe flushing/sampling valve
- Vinyl caps on all outlets keep contaminants out and waterway clean
- Easily serviced for regular maintenance from above ground-no digging!
- Optional 3' pedestal and casted door logo
- 1" FIP inlet, designate depth of bury



Evacuation
Hand Pump
(required-sold
separately)



Electric
Evacuation
Pump
(required-sold
separately)



Optional Casted
Door Logo

ECLIPSE™



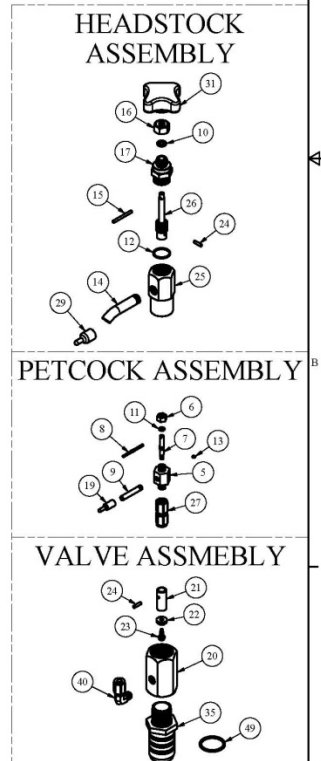
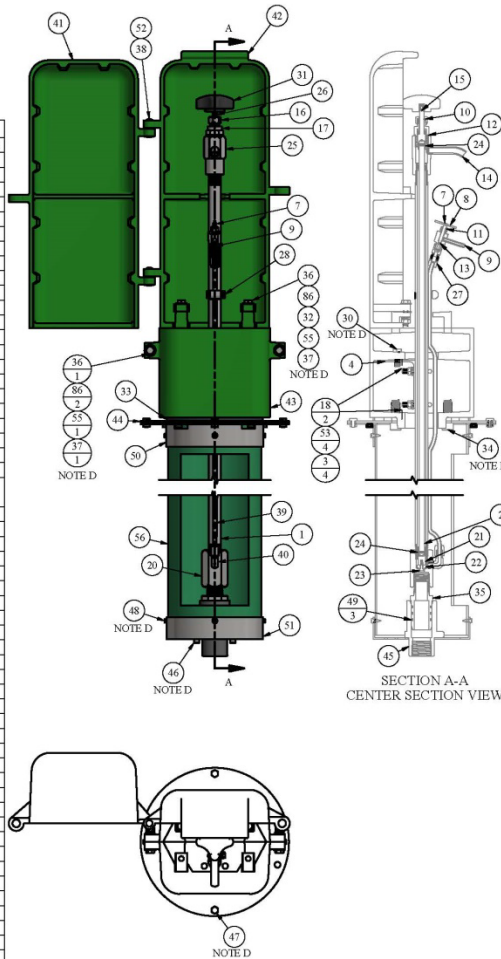
Meets the Requirements of
NSF/ANSI 372

88-SS-R CUT SHEET

PARTS LIST				
ITEM	QTY	PART NUMBER	DESCRIPTION	NOTES
1	1	1/2SSR	1/2" S.S. PIPE	B.C
2	1	38SSR	3/8" S.S. ROD	B.C
3	4	345-N-9400	PLATFORM NUT	
4	1	4 ALUM ANGLE	MOUNTING ANGLE	
5	1	66S01	PETCOCK BODY	
6	1	66S02	PETCOCK NUT	
7	1	66S03	PETCOCK PLUNGER	
8	1	66S04	HANDLE PIN	
9	1	66S05	PETCOCK NOZZLE	
10	1	66S07	O-RING (PACKING NUT)	
11	1	66S08	O-RING (PETCOCK PACKING NUT)	
12	1	66S09	O-RING (STEM)	
13	1	66S10	O-RING (PETCOCK STEM)	
14	1	66S12	NOZZLE	C.Q
15	1	66S14	HANDLE KNOB PIN	C
16	1	66S15	PACKING NUT	
17	1	66S16	HEADSTOCK TOP NUT	
18	2	66S20	S.S. U-BOLT FOR 1/2" PIPE	
19	1	66S22	PETCOCK PLASTIC CAP	C
20	1	66S25	VALVE (COLD CLIMATE)	C
21	1	66S26	PLUNGER (COLD CLIMATE)	
22	1	66S27	SEAT RUBBER	C
23	1	66S28	8-32 x 1/2" Hex Washer Head Thread Cutting Screw (#1 Plunger)	C
24	2	66S30	SPRING PIN	
25	1	66S31	HEADSTOCK (COLD CLIMATE)	
26	1	66S32	STEM (COLD CLIMATE)	
27	1	66S33	S.S. ADAPTER (1/4" COMP. x 1/8" FIP)	C
28	1	66S34	S.S. HOSE CLAMP	
29	1	66S35	PLASTIC NOZZLE CAP	C
30	2	66S41	5/16" x 18 x 1" S.S. Hex Head Bolt	
31	1	66S42	KNOB	C
32	2	88-15	3" WEDGE WASHER	
33	1	88-22	GASKET	
34	4	88-23	PEDESTAL BOLT	
35	1	88-33	1" PISTON	
36	6	88-4	5/16" x 18 x 1-1/2" S.S. Hex Head Bolt	
37	6	88-5	5/16" x 18 S.S. Hex Nut	
38	2	88-AL	RIVET FOR 88 COVER	C
39	1	88-7SS	1/4" S.S. TUBING	B.C
40	1	88-8SS	1/4" COMP. x 1/8" MIP S.S. 90° ELBOW	C
41	1	88-A	"NEW STYLE" 88 COVER "A"	C.R
42	1	88-B	"NEW STYLE" 88 COVER "B"	C.R
43	2	88-C	NEW STYLE 88 BASE	R
44	1	88-XX	REMOVABLE PLATE	
45	1	9400A-06	1" VALVE CYLINDER	
46	2	9400A-07	1/4-20 x 1/2" S.S. Socket Head Bolt	
47	4	9400A-10	1/4-20 x 7/16" S.S. Hex Head Bolt	
48	8	9400A-11	#10 x 1/2" S.S. Self-Tapping Screw	
49	3	9400A-21	O-RING FOR 1" VALVE PISTON	
50	1	9400A-29	TOP PLATE BASE ASSEMBLY	
51	1	9400A-30	DEBRIS PLATE	
52	2	9419	1/4" S.S. Flat Washer	
53	4	9458	1/4" S.S. Lock Washer	
54	6	9465	5/16" S.S. Lock Washer	
55	1	9803	6" SCH. 35 PVC PIPE	B
56	10	OPTIONS/REPAIR PARTS LIST		
57	0	88-A-LOGO	NEW STYLE 88 COVER "A" WITH LOGO	A.C.R
58	0	88P-1S	SMALL PUMP	A
59	0	288PS	LARGE PUMP	A

REPAIR KITS		
PART NUMBER	DESCRIPTION	PARTS INCLUDED
X66-CC	HEADSTOCK ASSEMBLY COMPLETE	66S31 HEADSTOCK (1), 66S12 NOZZLE (1), 66S35 CAP (1)
X66-CC	COLD CLIMATE TOP SCREW	66S42 KNOB (1), 66S14 ROD PIN (1), 66S32 STEM (1), 66S15 PACKING NUT (1), 66S07 PACKING NUT O-RING (1), 66S16 TOP NUT (1), 66S09 STEM O-RING (1)
X66-PETCOCK	S.S. PETCOCK ASSEMBLY	66S01 BODY (1), 66S08 NUT O-RING (1), 66S02 NUT (1), 66S03 PLUNGER (1), 66S10 PLUNGER O-RING (1), 66S04 PIN (1), 66S05 NOZZLE (1), 66S22 CAP (1)
X66-PLUNGER	#66 PLUNGER ASSEMBLY	66S26 PLUNGER (1), 66S27 SEAT RUBBER (1), 66S28 PLUNGER SCREW (1)
X66RK	88-SS REPAIR KIT	66S27 SEAT RUBBER (1), 66S28 SCREW (1)
X88-33	VALVE PISTON WITH O-RINGS	88-33 PISTON (1), 9400A-21 O-RING (3)
X881-66	ALUMINUM COVER COMPLETE	88-A FRONT COVER (1), 88-B BACK COVER (1), 88-6-AL RIVETS (2), 9419 FLAT WASHER (2)
X882-66	ALUMINUM BASE COMPLETE	88-C BASE (2), 88-4 BOLT (4), 9465-88 LOCK WASHER (4), 88-5 NUT (4), 4 ALUM ANGLE (0.25), 66S41 BOLT (2), 88-14 WASHER (8)
X883-66	ALUMINUM COVER AND BASE COMPLETE	88-A FRONT COVER (1), 88-B BACK COVER (1), 88-C BASE (2), 88-4 BOLT (6), 88-15 WEDGE WASHER (2), 9465-88 LOCK WASHER (6), 88-5 NUT (6), 88-14 WASHER (12), 4 ALUM ANGLE (0.25), 66S41 BOLT (2), 9419 WASHER (2)

NOTE	DESCRIPTION
A	NOT SHOWN
B	PIPE LENGTH DEPENDENT ON DEPTH OF BURY
C	SOLD AS REPLACEMENT PART
D	BOLT ASSEMBLY USED ON ALL SIMILAR HOLES/BRACKETS
Q	REPLACEMENT NOZZLE REQUIRES BENDING IN THE FIELD AFTER INSTALLATION
R	POWDER COATING OPTIONS AVAILABLE
U	MOUNTABLE MONITOR AND ADDITIONAL QUICK



DRAWN	SMS	11/19/2018
CHECKED		
MODIFIED		
SIZE	C	SCALE 1/5
DWG NO	#88-SS-R Cut_Rev0	
SHEET		REV 0
1 OF 1		



2511 North 9th St.
St. Louis, MO 63102
800-231-3990
www.hydrants.com

Distributed by:

DISCLAIMER:
THIS DRAWING IS THE PROPERTY OF THE KUPFERLE
FOUNDRY COMPANY. IT IS NOT TO BE USED OR
DUPLICATED WITHOUT THE PERMISSION OF THE OWNER.

LEGEND	
(X)	STANDARD TAG
(X/Y)	TAG WITH Y QUANTITY