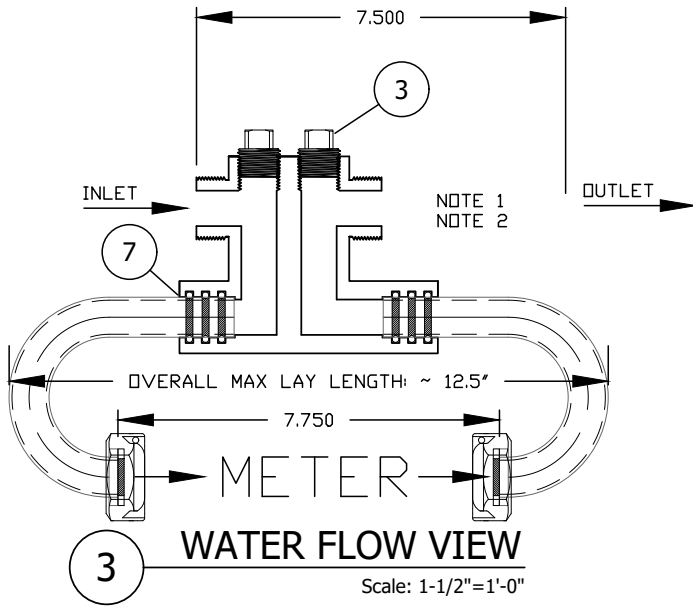
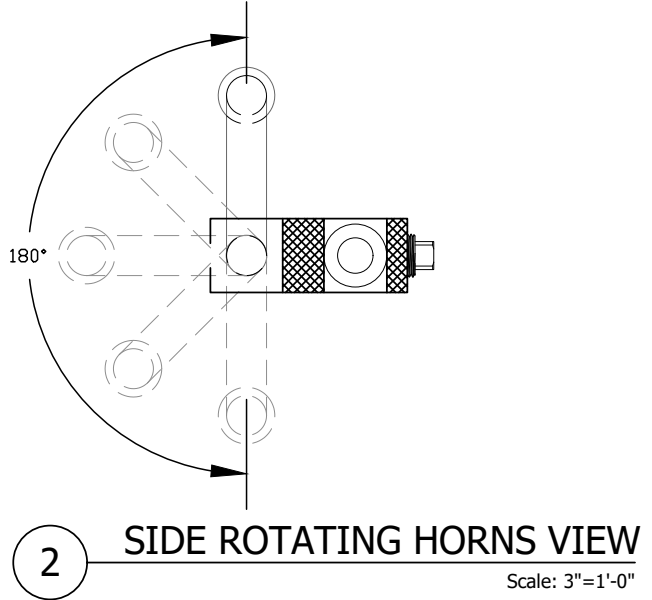
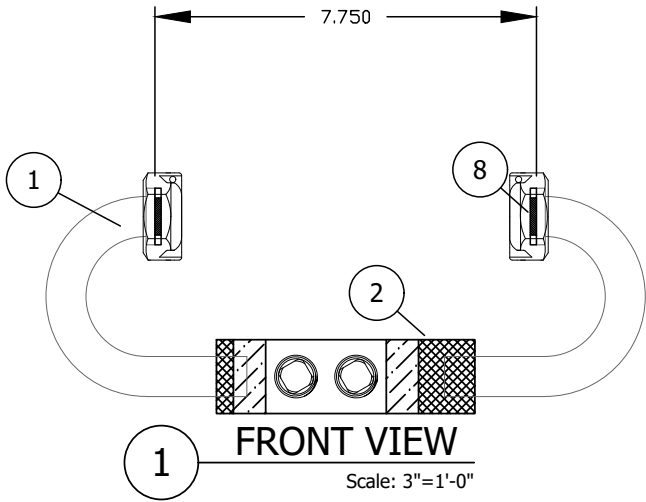


#95WM 5/8"x3/4" METER SETTER SPEC SHEET



ITEM	ITEM / DESCRIPTION	NOTES
1	5/8"x3/4" COPPER HORN (FLANGE x SLIP)	
2	95WM BODY (5/8"x3/4" METER x SLIP)	
3	S.S. PLUG	
4	NOT USED	
5	NOT USED	
6	NOT USED	
7	O-RING SLIP JOINT	
8	3/4" EPDM RUBBER METER GASKET	

METER SETTER SHALL BE METER BOX RETROFIT STYLE FOR A 5/8" x 3/4" METER, WITH 3/4" METER THREADED INLET AND OUTLET, BOTH WITH A FACE FOR GASKET SEAL. IF DESIRED A DUAL CHECK VALVE (NYLON OR BRASS BODY) SHALL BE LOCATED BETWEEN THE WATER METER AND RESIDENCE.

METER SETTER SHALL HAVE REMOVABLE HORNS THAT ATTACH TO THE RESETTER BODY VIA A 3 O-RING SLIP CONNECTION. THE METER ITSELF SHALL HOLD THE HORNS INTO THE BODY ONCE INSTALLED.

METER SHALL BE ABLE TO BE ROTATED AROUND THE HORN AXIS ALLOWING THE SETTER TO ACCOMODATE FOR DIFFERENT ANGLES AS NEEDED.

NOTES:

- DUAL CHECK VALVE OPTIONAL WITH DIFFERENT BODY STYLES AVAILABLE (REINFORCED NYLON OR BRASS).
 - ZURN WILKINS (NYLON) DUAL CHECK MANUFACTURED IN COMPLIANCE WITH ANSI/ASSE 1024, CSE CERTIFIED, NSF 61 (ANNEX G) LISTED, CERTIFIED TO NSF/ANSI 372 BY IAPMO R&T.
 - A.Y. MCDONALD (BRASS) DUAL CHECK MANUFACTURED IN COMPLIANCE WITH ANSI/ASSE 1024 AND COMPLIANT WITH USA PUBLIC LAW 111-380 AND IDENTIFIED WITH "NL".
- IDLER OPTIONAL WITH DIFFERENT BODY STYLES AVAILABLE (PVC OR BRASS).
 - KUPFERLE (PVC) IDLER .
 - A.Y. MCDONALD (BRASS) IDLER COMPLIANT WITH USA PUBLIC LAW 111-380 AND IDENTIFIED WITH "NL" .

#95WM METER SETTER TO BE INSTALLED AT THE FOLLOWING LOCATIONS:

06/22/22	CORRECTED INLET THREADS	MAXIMUM WORKING WATER PRESSURE: 175 PSI TEMPERATURE RANGE: 32° TO 140°F NOTE: USE ONLY APPROVED SEALANTS. IMPROPER SEALANTS MAY CAUSE BRITTLINESS.	DRAWN DCL APPROVED DCL
DATE	STATUS / REVISION		
	#95WM METER SETTER	SHEET 1	DF 1

DATE	3/24/15
SCALE	3'=1'-0"



2511 NORTH 9TH STREET
ST. LOUIS, MO 63102
1-800-231-3990
FAX 314-231-2820
www.hydrants.com