

# #9800-B w/ CHECK VALVE AUTOMATIC FLUSHING DEVICE

Flushing device shall be installed in the following locations:

---



---



---



---



---



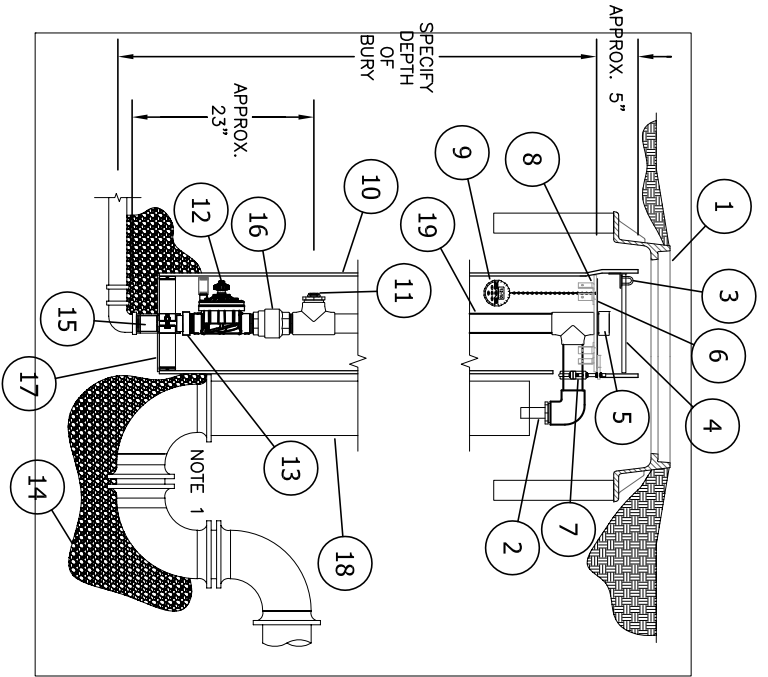
---



---



---



ITEM	ITEM / DESCRIPTION	OPTIONAL	BY OTHERS	NOTES
1	MANHOLE & COVER		X	
2	REDUCER AND DISCHARGE NIPPLE	X		
3	PADLOCK EYE FOR LOOKING LID			
4	ACCESS PLATE			
5	2" CAP OR PLUG			
6	REMOVABLE ACCESS/THRUST PLATE			
7	2" SPLIT-RING PIPE CLAMP			
8	STANDOFF/THRUST BASE			
9	CONTROLLER			
10	SDR 35 PVC PIPE			
11	AUTOMATIC DRAIN			
12	2" AUTOMATIC VALVE			
13	O-RING CONNECTOR			
14	1" CLEAN ROCK		X	
15	2" S.S. MIP INLET			
16	2" CHECK VALVE		X	
17	DEBRIS PLATE			
18	6" PVC SEWER PIPE & P TRAP		X	
19	SCHEDULE 80 PVC PIPE			NOTE 2

**LAYOUT NOTES:**

- 1.) KUPFERLE RECOMMENDS THE INSTALLATION OF A 6" DWV P TRAP
- 2.) SPECIFY IS PIPE AND TEE TO BE STAINLESS STEEL OR BRASS INSTEAD OF PVC.

Automatic flushing device shall have a 2" stainless steel MIP inlet will lead vertically to the bottom of a 2" automatic flushing valve. The flushing valve shall control the flow of water through the hydrant and its diaphragm with the extension and retraction of a DC latching solenoid and have a 220 PSI rating. A 2" check valve shall be mounted above the 2" automatic flushing valve to prevent any backflow. Each unit shall be furnished with a stand-alone valve controller. The valve controller will not require a second hand-held device for programming. Controller must have minimum of 12 possible flushing cycles per day. Controller shall be submersible to 12 feet, operate with a second battery, and have resin-sealed electrical components. The solenoid shall have no loose parts when removed from the valve. Removal of the 2" valve shall be possible via an o-ring connector located beneath the valve after the above ground disconnection of the stainless steel access/thrust plate and pipe clamp support. Valve assembly shall be housed in a PVC enclosure with a lockable cover and each unit shall be self-draining, non-freezing. Main run of riser pipe shall be SCH. 80 PVC with a PVC tee, if desired stainless steel and brass is available if specified.

Unit model # shall be 9800-B as manufactured by Kupferle Foundry Company, St. Louis MO (1-800-231-3990), or approved equal.

**NOTE: Flush water lines free of debris before installation**

DD/MM/YY	ISSUED FOR REFERENCE
DATE	STATUS / REVISION

DRAWN DCL	CHECKED DCL	APPROVED DCL	SHEET 1 OF 1	SCALE: 1/2"=1'	DATE 5/14/15
--------------	----------------	-----------------	--------------	----------------	-----------------

2511 NORTH 9TH STREET  
ST. LOUIS, MO 63102  
1-800-231-3990  
FAX 314-231-2820  
www.hydrants.com