

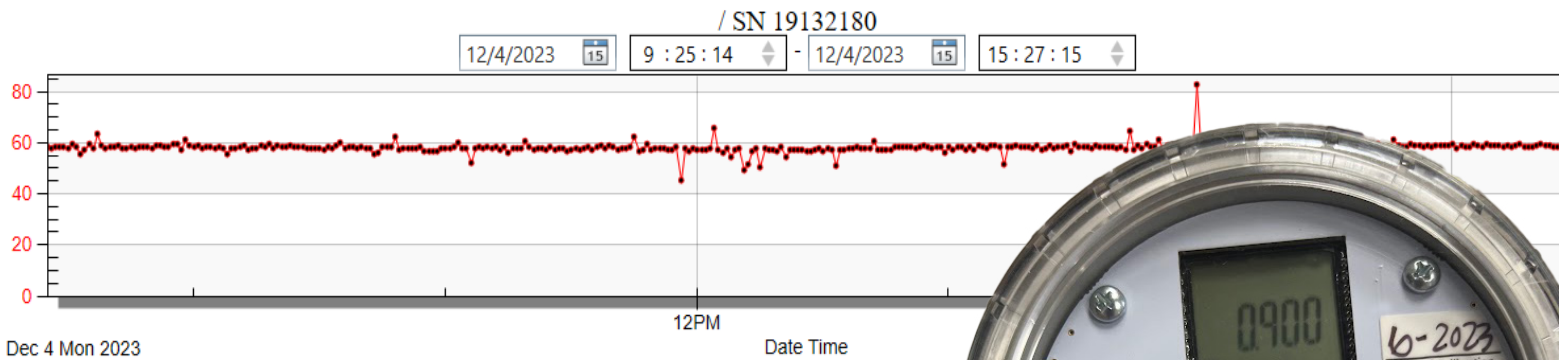
# Kupferle Pressure Logger Series



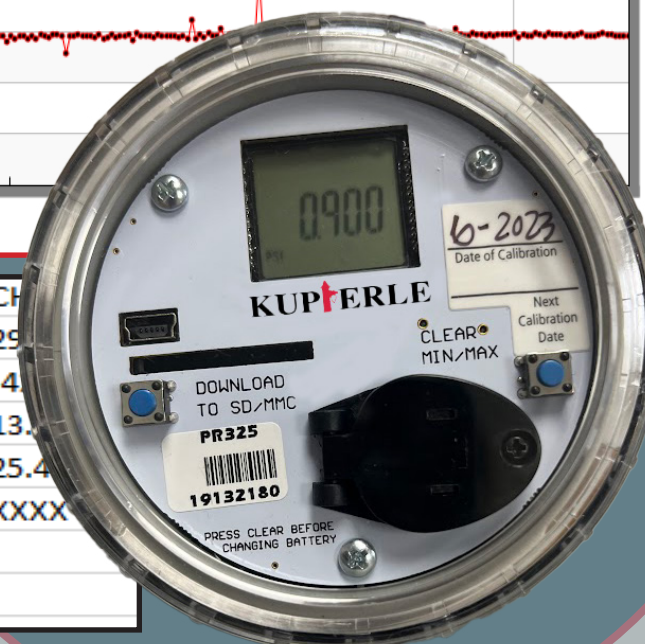
*Easily log and collect water system pressure data with new and existing Kupferle products!*

- Simple & numerous methods for field deployment
- Easy & intuitive PC setup for logging and data downloads
- Dynamic data visualizations with easy to read tables and graphs
- Easily included with or added onto Kupferle meter pit sample stations, automatic flushing stations, and more!

Model: PR325		
Serial: 19132180		
Date/Time	Pressure (PSI)	Index
Minimum Value	-42	
Average Value	13.9	
Maximum Value	296.4	
6/21/2023 22:29	60	22541
6/21/2023 22:30	60.2	22542
6/21/2023 22:31	60.4	22543
6/21/2023 22:32	60.8	22544
6/21/2023 22:33	60.7	22545
6/21/2023 22:34	60.6	22546
6/21/2023 22:35	57	22547
6/21/2023 22:36	60.9	22548
6/21/2023 22:37	60.1	22549
6/21/2023 22:38	60.5	22550
6/21/2023 22:39	60.4	22551
6/21/2023 22:40	60.7	22552
6/21/2023 22:41	60.3	22553



Logger Summary		Data Summary	
Logger Model	PR325	Max	296.4
Logger Name		Min	-42
Serial Number	19132180	Average	13.9
Data Points	27802	Std. Dev.	25.4
Start Date/Time	6/6/2023 6:48	MKT	XXXX
End Date/Time	6/25/2023 14:09		
Total Time	19.07:21:00		



# Deployment Options:



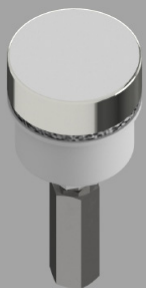
- Incorporate with Kupferle meter pit sampling stations (P-94WM and P-95WM models)
- Retrofit existing 94/95WM Sampling Stations (92T)
- Compatible with 5/8" x 3/4", 5/8" x 1/2", or 1" meters
- Log pressure from unused meter pits (P-96WMA and P-96WMB models)



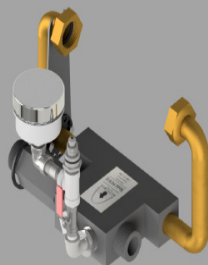
Incorporate or retrofit with our Eclipse 9800WC Auto Flusher



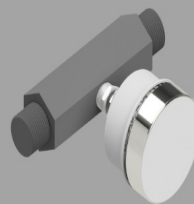
Log from any hydrant in our secure aluminum enclosure



P-92T Configuration  
(Retrofit 94WM/95WM)



P-94WM and P-95WM  
Configuration



P-96WMA and P96WMB  
Configuration (Empty  
Meter Pit)



P-9800WC  
Configuration

