

PATENT PENDING

# #24 CUT SHEET

OPTIONAL PEDESTAL  
(3' STANDARD)

### PARTS LIST

ITEM	QTY	PART NUMBER	DESCRIPTION	NOTES
1	2.500 in	1/8 X 2 1/2SSN	1/8" STAINLESS STEEL PIPE NIPPLE	
2	1	1/8SSC	1/8" STAINLESS STEEL COUPLING	
3	45.250 in	1/8SSP	1/8" STAINLESS STEEL PIPE	
4	1	1/8SST	1/8" S.S. TEE	
5	1	1/890SSL	1/8" S.S. STREET ELBOW	
6	44.000 in	1SSP	1" STAINLESS STEEL PIPE	
7	1	24S01	VALVE BODY	
8	1	24S02	VALVE SEAT CARRIER	
9	1	24S03	VALVE CORE	
10	1	24S04	HEADSTOCK	
11	1	24S05	TOP CAP	
12	1	24S06	CONNECTING NUT	
13	1	24S07	HANDLE PLUG	
14	2	24S08	VALVE SEAT CARRIER O-RING	
15	1	24S09	VALVE CORE O-RING	
16	1	24S10	TOP CAP O-RING	
17	1	24S11	OPERATING SCREW	
18	1	24S12	HOSE BARB	
19	1	24S13	TUBING CLAMP	
20	1	24S14	PLASTIC WASHER	
21	1	24S15	OUTLET NOZZLE	
22	1	66S35	NOZZLE CAP	
23	1	66S42	HANDLE	
24	6	88-4	S.S. HEX HEAD BOLT FOR ENCLOSURE	
25	2	88-5	S.S. HEX NUT FOR ENCLOSURE BOLTS	
26	2	88-6	RIVET FOR 88 COVER	C
27	2	88-11	PIPE THREAD O-RING PLUNGER	
28	10	88-14	5/16" S.S. FLAT WASHER	
29	1	88-A	"NEW STYLE" 88 COVER "A"	C,R
30	1	88-B	"NEW STLE" 88 COVER "B"	C,R
31	1	88-C1	"NEW STYLE" 88 BASE	C,R
32	1	88-C2	"NEW STYLE" 88 BASE	C,R
33	1	88PE-06	DRAIN TUBE	
34	1	9419	S.S. FLAT WASHER FOR ENCLOSURE	
35	1	9465	S.S. LOCK WASHER FOR ENCLOSURE	

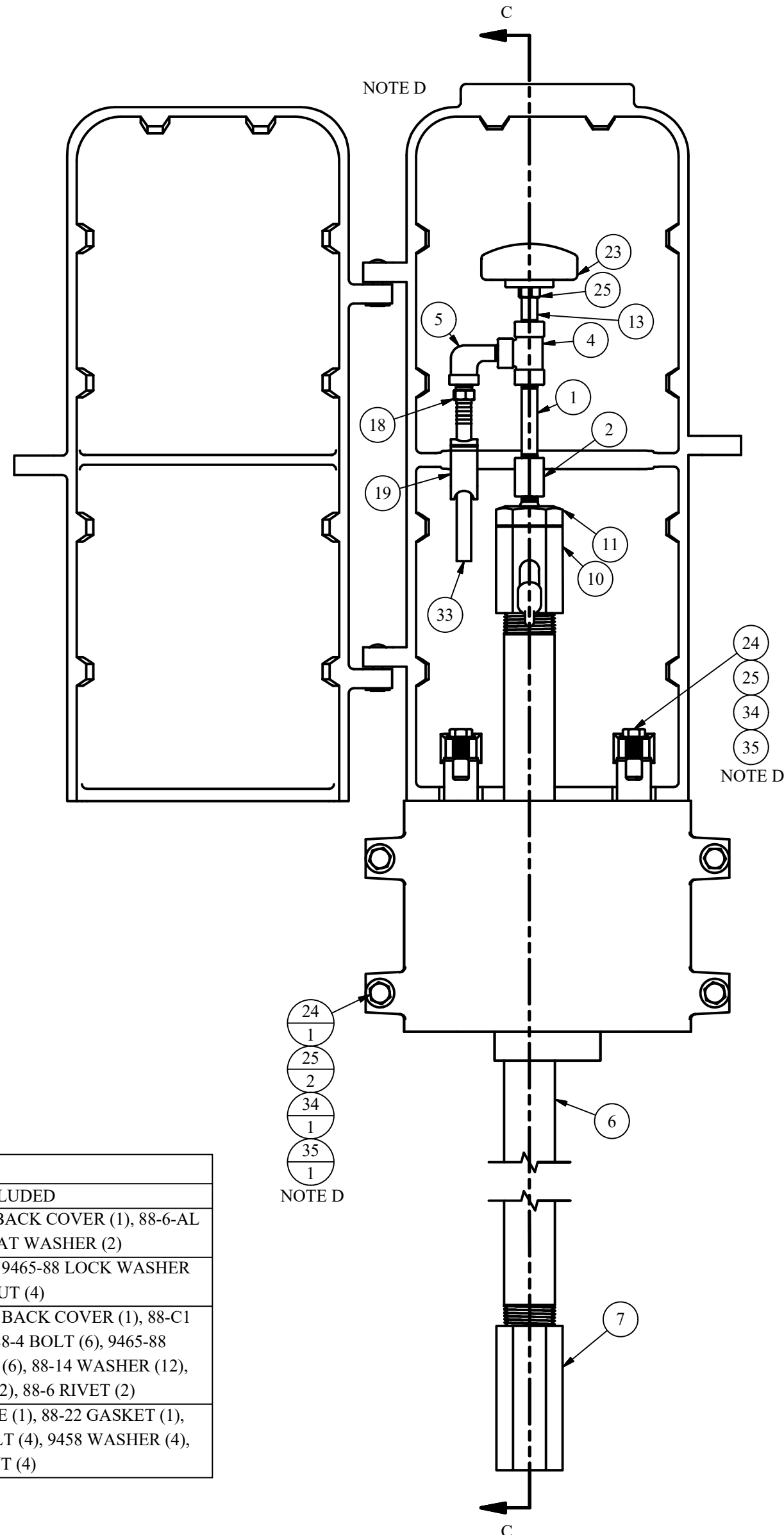
### OPTIONAL PARTS

ITEM	QTY	PART NUMBER	DESCRIPTION	NOTES
36	2	678	FLANGE COUPLING	
37	34.000 in	4FBE	FUSION BONDED EPOXY PIPE	
38	2	88-22	GASKET FOR PEDESTAL	
39	4	88-23	PEDESTAL BOLT	

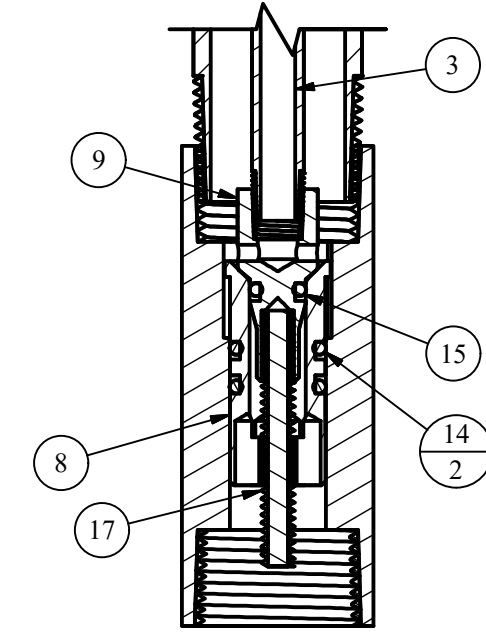
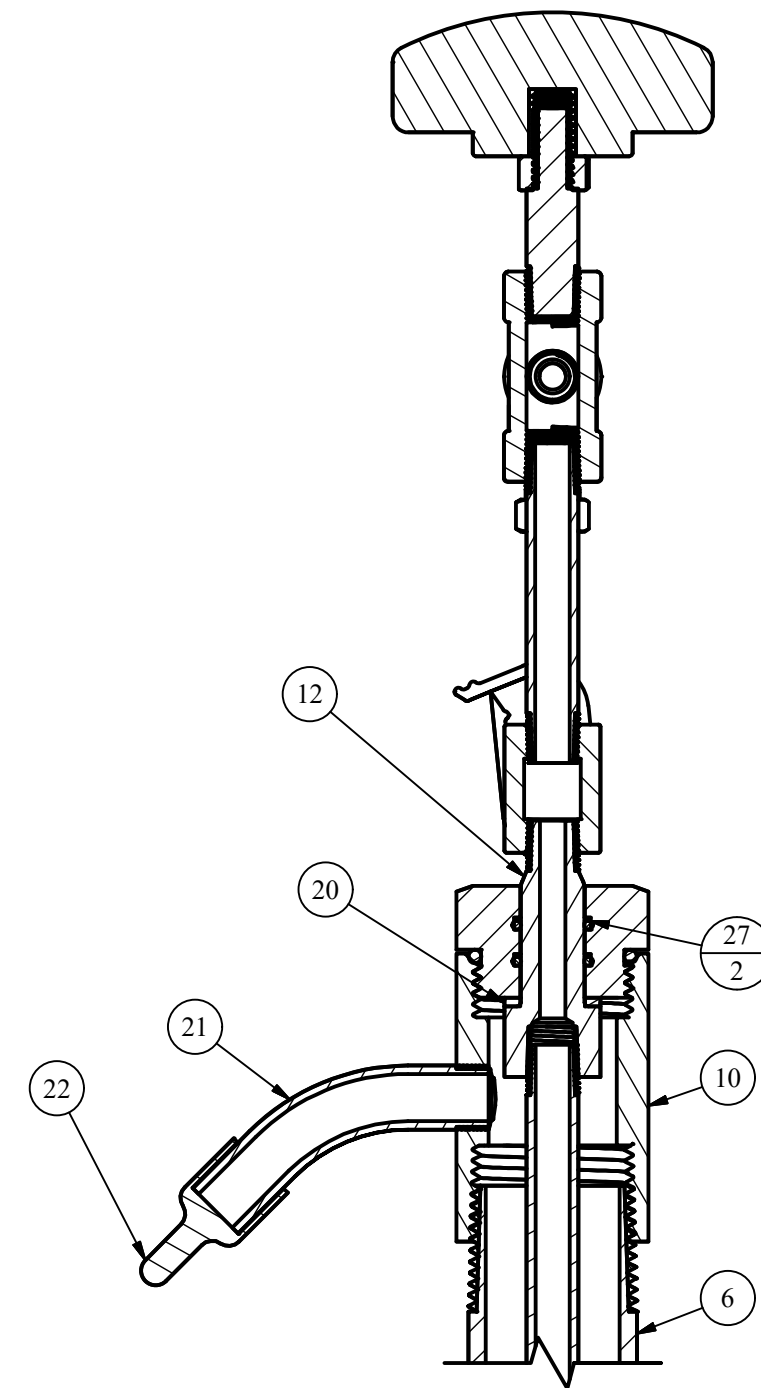
### REPAIR KITS

PART NUMBER	DESCRIPTION	PARTS INCLUDED
X881	ALUMINUM COVER COMPLETE	88-A FRONT COVER (1), 88-B BACK COVER (1), 88-6-AL RIVETS (2), 9419 FLAT WASHER (2)
X882	ALUMINUM BASE COMPLETE	88-C BASE (2), 88-4 BOLT (4), 9465-88 LOCK WASHER (4), 88-5 NUT (4)
X883	ALUMINUM COVER AND BASE COMPLETE	88-A FRONT COVER (1), 88-B BACK COVER (1), 88-C1 BASE (1), 88-C2 BASE (1), 88-4 BOLT (6), 9465-88 LOCKWASHER (6), 88-5 NUT (6), 88-14 WASHER (12), 9419 FLAT WASHER (2), 88-6 RIVET (2)
X88-36P	3' PEDESTAL COMPLETE	678 COUPLING (2), 4FBE PIPE (1), 88-22 GASKET (1), 88-23 BOLT (4), 9400A-38 BOLT (4), 9458 WASHER (4), 345-N NUT (4)

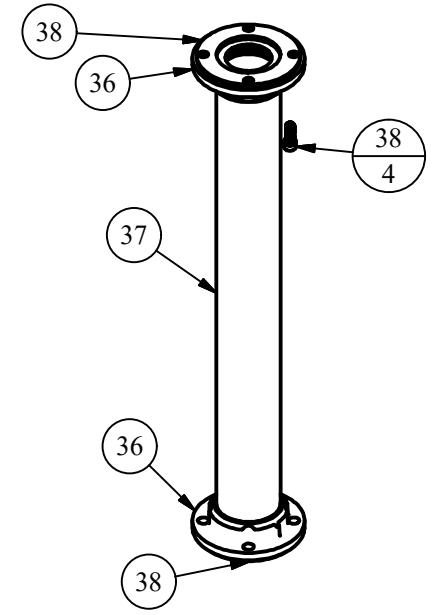
NOTE	DESCRIPTION
A	NOT SHOWN
B	PIPE LENGTH DEPENDENT ON DEPTH OF BURY, SHOWN AS 3'
C	SOLD AS REPLACEMENT PART
D	BOLT ASSEMBLY USED ON ALL SIMILAR HOLES/BRACKETS
R	POWDER COATING OPTIONS AVAILABLE



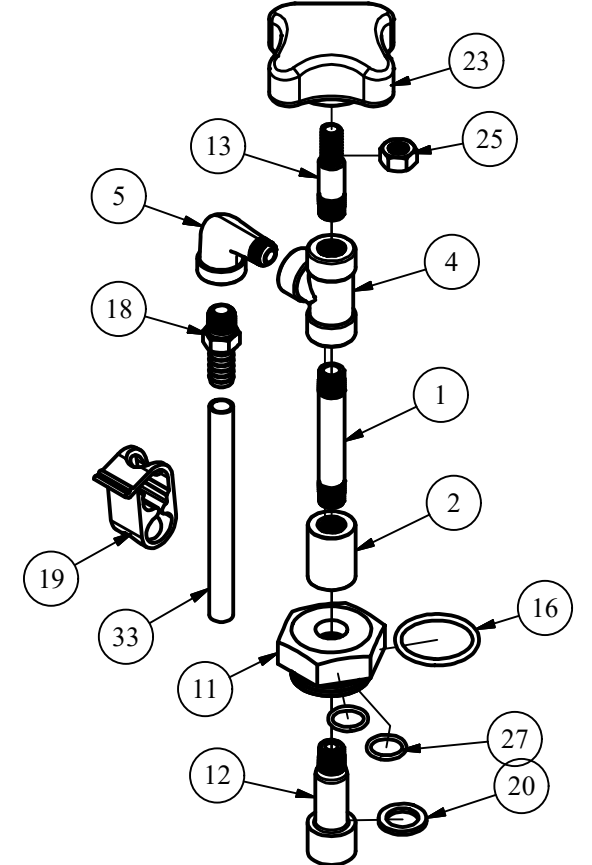
1" FIP INLET



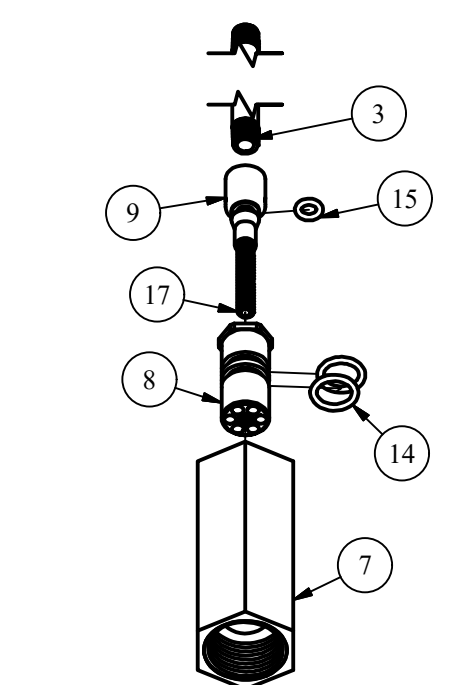
SECTION C-C  
SCALE 1 : 1.5



### TOP NUT ASSEMBLY



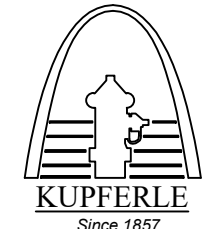
### VALVE CARTRIDGE ASSEMBLY



### LEGEND

- (X) → STANDARD TAG
- (X/Y) → TAG WITH Y QUANTITY

**DISCLAIMER**  
THIS DRAWING IS THE PROPERTY OF THE KUPFERLE  
FOUNDRY COMPANY. IT IS NOT TO BE USED OR  
DUPLICATED WITHOUT THE PERMISSION OF THE OWNER.

DRAWN KJW	9/24/2023	 Since 1857 2511 NORTH 9TH ST. ST. LOUIS, MO 63102 1-800-231-3990
CHECKED		
MODIFIED KJW	3/6/2024	
SIZE C	SCALE 5/16	
DWG NO #24		SHEET 1 OF 1
		REV 1