

Eclipse #24

Stainless Steel Sample Station For Cold Climates

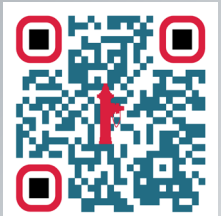


About the Eclipse #24

- New and improved all stainless waterway!
- Smooth flow with no vibration for an ideal sample stream
- Internal evacuation rod prevents flash freezing and installation mishaps
- All key operational components below grade but removable from above
- Secure locking cast-aluminum enclosure

Getting More Specific...

- 1/2" Sampling Nozzle
- 1" FIP inlet connection
- 3/8" hose barb for 1/8" internal evacuation line
- Electric evacuation pump (EEP) sold separately
- Lockable powder-coated cast-aluminum enclosure (option to cast your own logo)
- Can accommodate any bury depth in 6" increments
- Optional pedestal up to 3' (1' pictured)



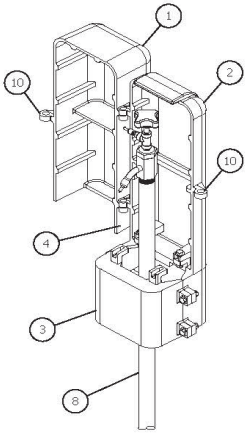


Create a Custom Design!

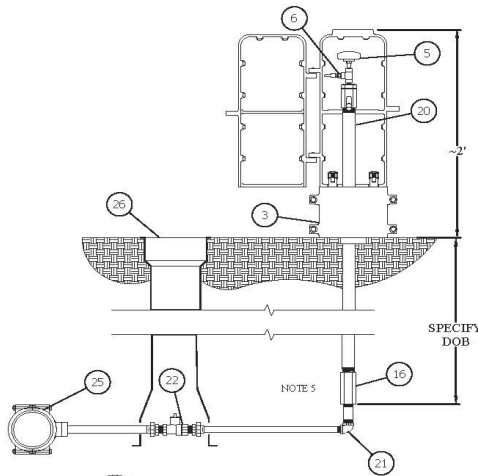
Special powder coat paint, boxes with logos, pedestals, and more!



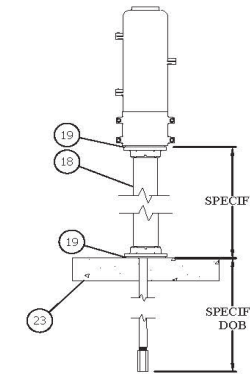
#24 SAMPLING STATION SPEC SHEET



A ISO VIEW
Scale: 1"=1'-0"



1 #24 INSTALL DETAIL
Scale: 3/4"=1'-0"



B PEDESTAL OPTION
Scale: 1/2"=1'-0"

GENERAL SPECIFICATIONS	
MAXIMUM OPERATING PRESSURE	
STATION MATERIALS	303, 304, 316, & 18-8 STAINLESS STEEL, BUNA-N
ENCLOSURE MATERIAL	CAST 319 ALUMINUM
ENCLOSURE COLOR	GREEN
WETTED MATERIALS	BUNA-N RUBBER, 303, 304, 316 & 18-8 STAINLESS STEEL
DEPTH OF BURY:	SPECIFY
WEIGHT:	-35 LBS @ 3' DOB
ADDITIONAL PEDESTAL WEIGHT:	-38 LBS FOR 3' PEDESTAL
CUSTOM LOGO:	
NSF CERT:	

ITEM	DESCRIPTION	NOTES
1	88 FRONT DOOR (COVER A)	
2	88 REAR DOOR (COVER B)	
3	88 BASE	2 PIECES
4	1/2" UNTHREADED NOZZLE	
5	OPERATING HANDLE	
6	DRAIN HOSE BARB	
7	DRAIN CAP	
8	1" S.S. BARREL	
9	S.S. OPERATING ROD	NOT SHOWN
10	LOCKING HOLE	
11	VALVE CORE	NOTE 5
12	VALVE SEAT CARRIER	NOTE 5
13	OPERATING SCREW	NOTE 5
14	SEAT O-RING	NOTE 5
15	WATER PATH	
16	VALVE BODY	NOTE 5
17	INLET HOLES	
18	PEDESTAL	
19	PEDESTAL GASKET	
20	PACKING NUT	
21	3/4" S.S. ELBOW	BY OTHERS
22	CURBSTOP	BY OTHERS
23	CONCRETE	BY OTHERS
24	ANCHORS	BY OTHERS
25	SADDLE CLAMP	BY OTHERS
26	VALVE BOX	BY OTHERS

Sampling Station shall be _____' bury, with a 1" FIP inlet, and 1/2" unthreaded blow off and sampling bibb. Station shall be enclosed in a lockable, cast aluminum box with hinged openings.

When open, the station shall require no key for operation, and all water flow shall pass thru an all stainless steel waterway. All operational components shall be of stainless steel and serviceable / replaceable from above ground with no digging or excavation needed.

The operating screw shall be located underground and inside of the valve body. The operating screw, when turned via the handle, shall raise and lower a valve seat carrier, for controlling the flow of water through the hydrant. The station shall utilize an o-ring for sealing of the valve core to valve seat carrier to shut off the flow of water. The operating rod shall be supported on both ends, via the packing nut and the valve seat carrier to prevent the station from vibrating/pulsing under high pressures and to ensure a smooth sample stream.

When open, the water shall flow through the 6 openings of the valve seat carrier, up and around the valve core, up the stand pipe and out through the nozzle.

The operating rod shall be hollow. A secondary drain port shall be located on the hollow operating rod, underneath the handle and when open shall allow for evacuation of any water remaining inside the station, via pump or compressed air blow off, to prevent freezing.

The station shall be model #24 as manufactured by Kupferle Water Solutions, St. Louis MO. 63102 or approved equal.

Notes:

- 1.) If the color shall be any color other than green, check with the manufacturer for color options, and specify accordingly.
- 2.) When installed on or with concrete, Kupferle recommends the use of a gasket or barrier between the enclosure/pedestal and the concrete surface. when purchasing the station, if concrete install is specified on the order Kupferle will provide said gasket. the enclosure clamp on the bottom of the enclosure base will fit inside a 4" pvc pipe.
- 3.) Prolonged exposure to strong chlorides which can be present in concrete, cleaning agents, and sometime even potable water can lead to possible enclosure corrosion. regular maintenance and drying the station after use are the best methods for optimal station longevity.
- 4.) In corrosive solids the buried pipe should be prepped for additional resistance to corrosion. Kupferle recommends spraying all underground piping and fittings with bituminous spray tar, allowing proper time to dry, and then wrapping the parts.
- 5.) Reference valve details on page 2 for a more detailed understanding of the #24's superior valve, screw, seat and drain design.

ISSUED FOR	
STATUS / REVISION	

INITIALS	DATE
DRAWN KJM	4/17/24
APPROVED DCL	05/10/24
NOTIFY	
SHEET	SCALE
1 OF 1	3/4"=1'-0"

2511 NORTH 9TH STREET
ST. LOUIS, MO 63102
1-800-231-3990
FAX 314-231-2820
www.hydrants.com

KUPFERLE
WATER SOLUTIONS
Quality • Conservation • Innovation
Since 1857

Don't let them freeze!

Our rechargeable battery-powered evacuation pump (EEP) keeps your stations dry and safe from freezing during cold

